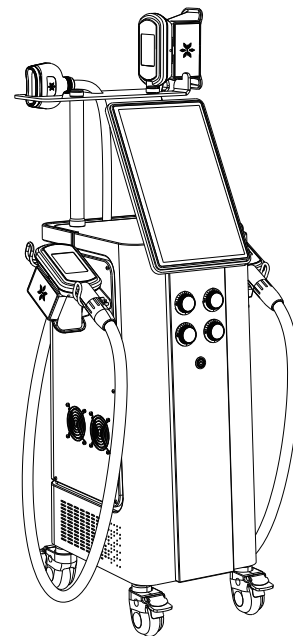


BeautyFreeze Sculptor User Manual

VT- 53K1



Preface

Dear User:

Welcome to the BeautyFreeze Sculptor, our latest beauty device. This professional body sculpting device should only be operated under the guidance of a trained professional. Improper operation may result in adverse effects for the individual undergoing treatment. Please read this manual carefully before operation, and follow the instructions in the manual during operation.

We believe that this high-quality product will deliver excellent results, and our exceptional after-sales service will alleviate any concerns you may have.

Thank you!

Content

1.Introduction	1
2.Precautions.....	1
3.Contraindications.....	2
4.Product Specifications.....	2
5.Packing List.....	4
6.Operating Instructions.....	5
How to install.....	5
Control Panel Introduction.....	8
7.Troubleshooting	9
8.FAQ	10
9.Treatments Introduction.....	11
Chin Sculpting.....	11
Abdomen Sculpting.....	12
Leg Sculpting	14
Back Sculpting.....	16
Hips Sculpting.....	17
10.Treatment Schedule.....	19
11.During treatment	19
12.Warranty & Support.....	20

1.Introduction

BeautyFreeze Sculptor, the highly coveted beauty device, represents an innovative alternative to many salon beauty devices. This device offers user-friendly operation and is designed to deliver highly effective body-shaping solutions. Moreover, it focuses on specific body areas and offers a safe, non-invasive, medication-free, and surgery-free treatment with no adverse effects, resulting in a more refined and attractive body contour.

2.Precautions

- 1.This instrument is a high-precision electronic device that requires proper storage. Please avoid storing it in humid conditions, direct sunlight, or near flammables and explosives to prevent damage.
- 2.Always use the designated accessories provided or recommended by the original manufacturer to ensure the performance of the instrument and sustain its lifetime.
- 3.Do not place the instrument in high-temperature conditions, as this may negatively impact its service life and performance.
- 4.Do not apply the instrument on eyes, thyroid, parathyroid, testicles, pregnant women's abdomen, pacemakers, etc.
- 5.Patients should refrain from using this instrument unless they have obtained permission from their doctor.
- 6.The application of an anti-freezing membrane on the operating area is necessary. Do not allow the handle to come into direct contact with the skin, and avoid operating on dry skin.

- 7.Power off the instrument when not in use to ensure its safety.
- 8.If you are currently taking anti-adiposity drugs, please discontinue their use for 1 - 2 months before using this instrument. Failure to do so may result in an extended course of treatment.
- 9.To maintain hygiene and extend the device's service life, sterilize it with saline.

3.Contraindications

- 1.Pregnancy or lactation.
- 2.Hypertension, heart disease, or with a pacemaker installed.
- 3.Unhealed wounds or during the recovery phase of surgery.
- 4.Epilepsy, severe diabetes, and hyperthyroidism.
- 5.Malignant tumors, hemophilia, and hemorrhage.
- 6.Skin disease or infectious disease.
- 7.Cesarean section within the last six months, a miscarriage within the last three months, or a natural birth within the last two months.
- 8.Had plastic surgery within 3 months or with implants or metal objects in the treatment area.

4.Product Specifications

Product Name: BeautyFreeze Sculptor

Product Model: VT-53K1

Case Material: Sheet metal

Handle material: ABS

Screen size: 15.6 inches

Product dimensions: 33cm*41cm*132cm

Packing dimensions: 54.5cm*57cm*101.6cm

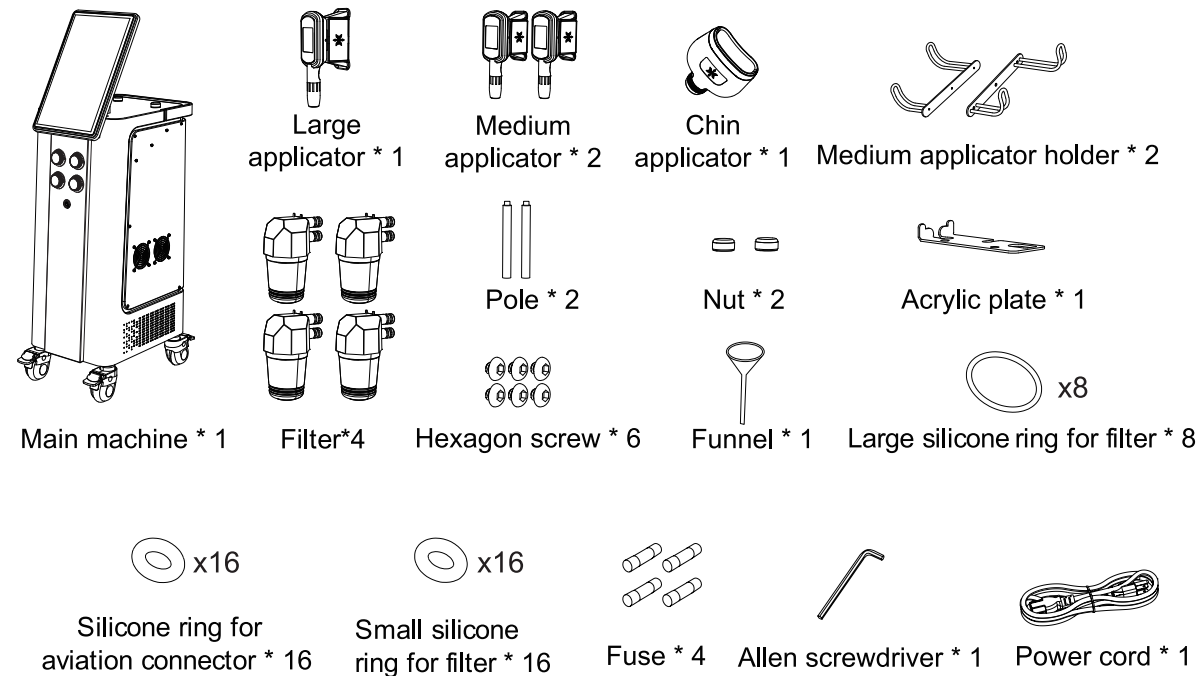
Product weight: 45kg

Packing weight: 65kg

Input voltage: AC110V/AC220V, 50Hz/60Hz

Rated power: 500W

5.Packing List

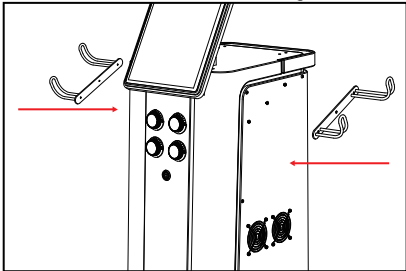


Note: make sure the packaging is complete before use, then remove all packaging materials and confirm that all accessories of the appliance are complete.

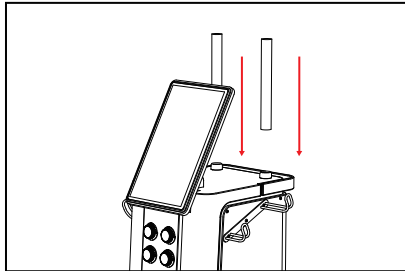
6. Operating Instructions

1. How to install

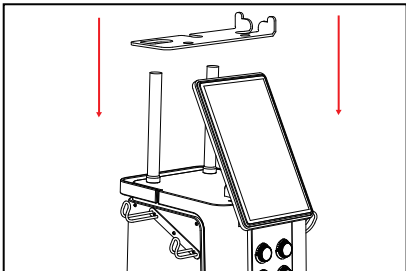
Step 1: Secure the medium applicator holders onto the main unit using screws.



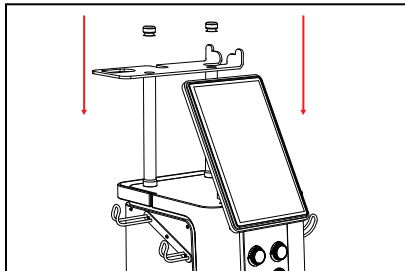
Step 2: Install the poles.



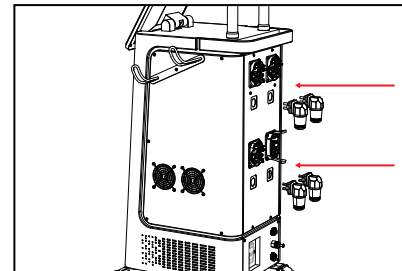
Step 3: Install the acrylic plate.



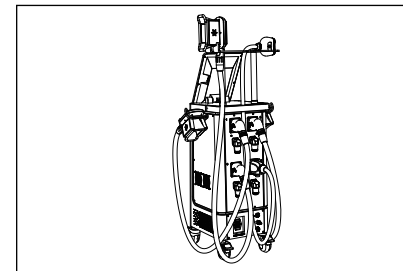
Step 4: Secure the nuts.



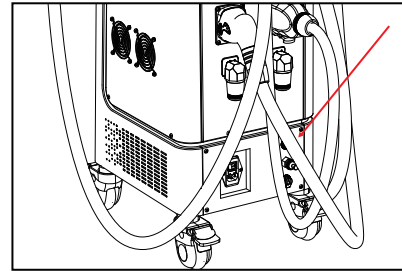
Step 5: Attach the filter.



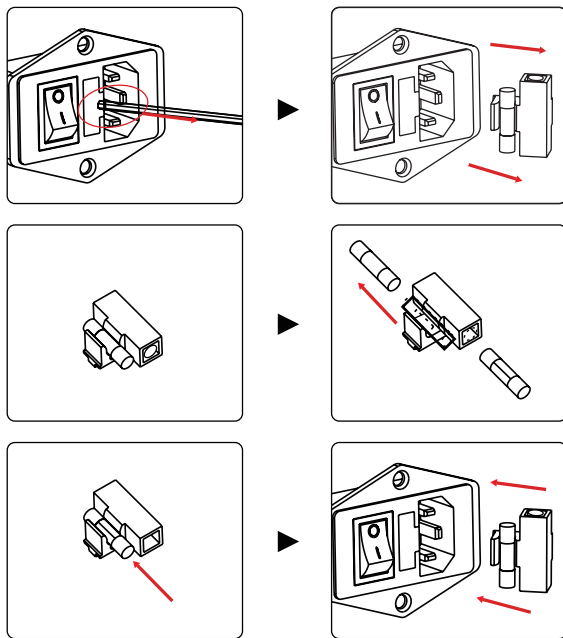
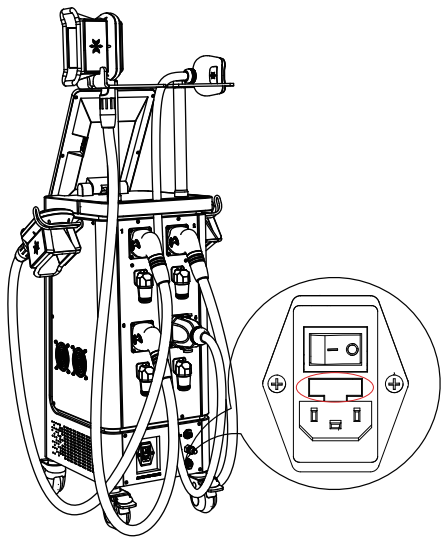
Step 6: Position the applicators onto the holder, and connect them to the main machine.



Step 7: Add water. Water drainage: place the funnel at the outlet, and remove it after the tank is completely drained.

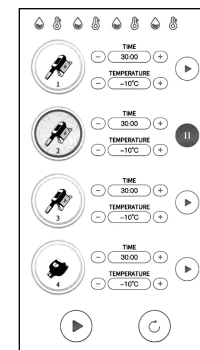


How to replace the fuse:



2.Control Panel Introduction

Welcome interface Main Menu



TIME
30:00 Time display

TEMPERATURE
-10°C Temperature display (recommended temperature range: Between 0 °C and 4 °C, it is recommended to start at 5 °C for the first time, and decrease the temperature after the user gets used to it.)

- + Time and temperature set buttons

▶ On/off button of the applicator

↻ Reset button

▶ On/off button (To start the treatment, select the desired applicator first, then tap this on/off button.)

⚠ Applicator's temperature alert, a yellow exclamation mark appears when the applicator temperature is abnormal.

💧 Tank Alert: A yellow exclamation mark appears when the tank is empty or experiencing abnormalities.

⏻ Power button on the front side of the main unit.

🌀 Vacuum knob, set the intensity according to the individual's tolerance. Start the treatment at the lowest level of vacuum intensity and gradually increase it as the user becomes accustomed to the treatment.

7. Troubleshooting

1. Fail to turn on the instrument.

- A. Make sure the power cable is connected to a valid wall socket.
- B. Check if the fuse is loose or burned.
- C. Please contact the dealer for assistance if the above methods don't work.

2. The instrument doesn't work after tapping the Start button.

- A. Check if the bottle is short of water, the instrument may fail to detect the water flow due to insufficient water level.
- B. Check for any water leakage from both the applicator and the bottle.
- C. Please contact the dealer for assistance if the above methods don't work.

3. A yellow exclamation mark appears on the water drop icon at the screen top (the 4 water drops from left to right symbolize the 1 to 4 applicators).

- A. Check for any water leakage from the instrument.
- B. Please contact the dealer for assistance if the above methods don't work.

4. A yellow exclamation mark appears on the thermometer icon at the screen top (the 4 thermometer icons from left to right symbolize the 1 to 4 applicators).

- A. The applicator's temperature is abnormal, please contact the dealer for assistance.

5. The instrument succeeded in starting up, but an error message appears on the screen.

- A. Please unplug the power cord, and wait for 1 minute before plugging in the power cord again and restarting the instrument.
- B. Please contact the dealer for assistance if the above method doesn't work.

8. FAQ

1. What is the mechanism behind this instrument?

A: When the applicator is applied to the skin, it cools the adipose tissue to 0°C to 4°C. The adipose tissue is then decomposed and metabolized by the body's circulation, resulting in body-sculpting effects.

2. Do I need to follow a diet and exercise plan after treatment?

A: Yes, diet and exercise are recommended to keep the results. This treatment only targets the adipose tissue decomposition, while the metabolism enhancement is not included. There are chances that the resolved issues could reappear without a healthy diet and regular exercise.

3. How long does it take to notice the result of cryolipolysis treatment?

A: Results can typically be seen in approximately 1-2 months, although this can vary based on individual factors and metabolism. Due to the low tolerance of adipose tissue to cold temperatures, maintaining a constant low temperature between 0 °C to 4°C can expedite the breakdown of adipose tissue. Subsequently, the body's circulation facilitates the metabolism of these decomposed tissue. This process unfolds over a period, and visible results may become apparent during this time.

4. Why the application of the anti-freezing membrane is necessary?

A: The anti-freezing membrane serves a dual purpose: preventing direct contact between the applicator and the skin to avoid frostbite, and aiding in maintaining the temperature at the treatment area. This contributes to an augmented body-sculpting effect.

9.Treatments Introduction

Chin Sculpting

1.Efficacy

Reduce adipose deposits under the chin for improved facial contouring.

2.Indications

(1)Individuals seeking to reduce a double chin.

3.Steps (30 minutes)

Preparation: Towel, anti-freezing membrane

(1)Cleanse the face.

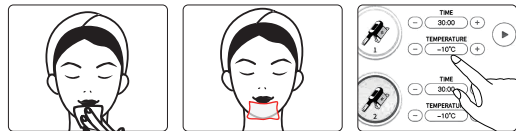
(2)Apply the anti-freezing membrane.

(3)Set parameters

a.Recommended working time: 30 minutes

b.Recommended temperature range: 0 °C ~ 4 °C

c.Adjust the suction intensity according to individual endurance.



(4)Applicator operation

a.Apply the applicator to the chine with the anti-freezing membrane in place and wait for 30 minutes.



(5)Remove the applicator and the membrane, and then cleanse the treatment area with a towel.



Abdomen Sculpting

1.Efficacy

Enhance skin tightness and diminish accumulations of adipose tissue on the abdomen.

2.Indications

(1)Individuals with excess abdominal adipose tissue or skin lacking firmness post-birth.

(2) Those with “muffin tops” due to a sedentary lifestyle.

3.Steps (30 minutes)

Preparation: Towel, anti-freezing membrane

(1) Clean the abdomen.

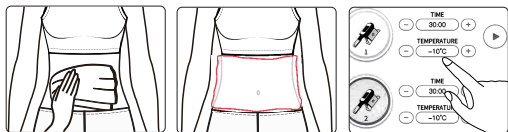
(2) Apply the anti-freezing membrane.

(3) Set parameters

a. Recommended working time: 30 minutes

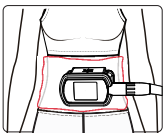
b. Recommended temperature range: 0 ℃ ~ 4 ℃

c. Adjust the suction intensity according to individual endurance.



(4)Applicator operation

a. Apply the applicator to the abdomen with the anti-freezing membrane in place, and wait for 30 minutes.



(5) Remove the applicator and the membrane, and then cleanse the treatment area with a towel.



Leg Sculpting

1.Efficacy

Improve the appearance of legs.

2.Indications

(1) Individuals with poor circulation in the lower body, edema, and excess adipose tissue.

(2) Those with concerns about their leg appearance.

3.Steps (30 minutes)

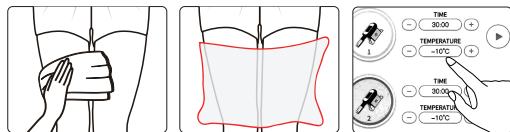
Preparation: Towel, anti-freezing membrane

(1) Clean the legs.

(2) Apply the anti-freezing membrane.

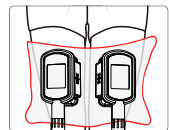
(3) Set parameters

- a.Recommended working time: 30 minutes
- b.Recommended temperature range: 0 ℃ ~ 4 ℃
- c.Adjust the suction intensity according to individual endurance.

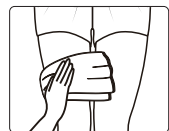


(4)Applicator operation

- a.Apply the applicator to the legs with the anti-freezing membrane in place, and wait for 30 minutes.



(5)Remove the applicator and the membrane, and then cleanse the treatment area with a towel.



Back Sculpting

1.Efficacy

Improve the appearance of the back.

2.Indications

(1)Individuals with excess adipose tissue on their back, giving an unattractive appearance in clothing.

3.Steps (30 minutes)

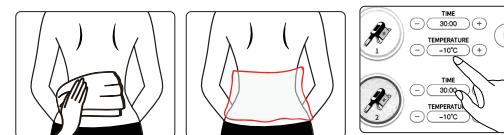
Preparation: Towel, anti-freezing membrane

(1)Cleanse the back.

(2)Apply the anti-freezing membrane.

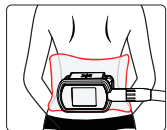
(3)Set parameters

- a.Recommended working time: 30 minutes
- b.Recommended temperature range: 0 ℃ ~ 4 ℃
- c.Adjust the suction intensity according to individual endurance.

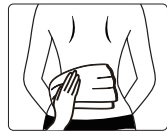


(4)Applicator operation

Apply the applicator to the waist with the anti-freezing membrane in place, and wait for 30 minutes.



(5)Remove the applicator and the membrane, and then cleanse the treatment area with a towel.



Hips Sculpting

1.Efficacy

(1)Enhance the contour of the hips.

2.Indications

People with excess adipose tissue.

Individuals with an unappealing buttock shape or those with flat buttocks.

3.Steps (30 minutes)

(1)Clean the hips.

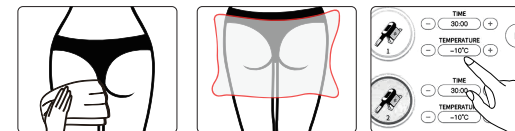
(2)Apply the anti-freezing membrane.

(3)Set parameters

a.Recommended working time: 30 minutes

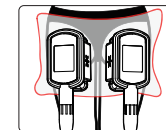
b.Recommended temperature: 0℃ ~ 4℃

c.Adjust the suction intensity according to individual endurance.



(4)Applicator operation

a.Apply the applicator to the hips with the anti-freezing membrane in place, and wait for 30 minutes.



(5) Remove the applicator and the membrane, and then cleanse the treatment area with a towel.



10. Treatment schedule

Typically, visible results require multiple sessions. We recommend 3 – 4 sessions with a 6 – 8 weeks interval between each session, although this may vary based on individual conditions. A single session lasts 30 minutes, and the user may experience mild redness, bruising, or regional numbness. These are normal and should subside within 1-2 weeks. After 3-4 sessions, the thickness of adipose tissue should be reduced by 20%-25%. However, the exact amount of adiposity decrease is influenced by various factors, and it does not necessarily lead to achieving your desired weight. A single session is insufficient to achieve the desired results. Please undergo multiple sessions for optimal outcomes.

11. During treatment

Caution:

1. During the treatment, adipose accumulations are gradually drawn into the applicator. The stronger the suction, the more tightly they are pulled in.

2. When the handle is applied to the treatment area, there may be air trapped between your skin and the membrane, resulting in the formation of bubbles due to the suction from the handle.
3. It's normal to experience mild swelling, redness, or bruising after treatment, so there's no cause for concern.

12. After treatment

1. Stay warm and avoid cold food or catching a cold.
2. Take a shower 4 - 6 hours later after treatment.
3. Drink plenty of warm water to stay hydrated and promote metabolism.
4. Avoid overeating or staying up late.
5. Avoid consuming cold, raw, or spicy food, and ensure you get enough sleep.
6. Avoid crop tops, backless dresses, miniskirts, and hotpants.
7. Do not scratch the treatment area.
8. Do not press the treatment area.

Warranty & Support

A one-year warranty is provided from the date of purchase.

Product Name: BeautyFreeze Sculptor
Product Model: VT-53K1
Production Date: _____
Quality Inspection: _____

