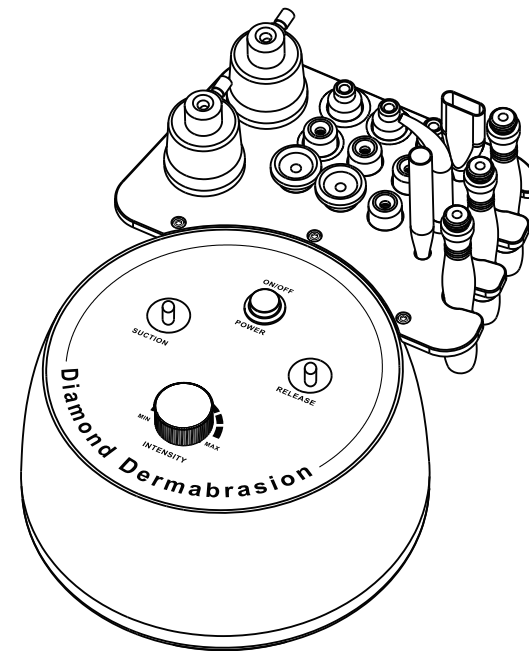


User Manual

SR-NF108



Content

1.Safety precautions	1
2.Contraindications	2
3.Overview	2
4.Interface Function	3
5.Technical Specification	7
6.Use Precautions	7
7.Maintenance & Cleaning	8
8.FAQ	9
9.Ask & Answer	10
10.Operation Guide	11
11.Warranty & Support	12

1. Safety precautions

1. Please read this manual carefully before use and familiarize yourself with the operation of this instrument and related technology.
2. This instrument is a high-precision electronic device that requires proper storage. Please avoid storing it in humid conditions, direct sunlight, or near flammables and explosives to prevent damage.
3. Always use the designated accessory provided or recommended by the manufacturer to ensure performance throughout its service life.
4. Do not place the instrument in high-temperature conditions, as this may negatively impact its service life and performance.
5. Do not apply the instrument on eyes, thyroid, parathyroid, testicles, pregnant women's abdomen, pacemakers, etc.
6. Patients should refrain from using this instrument unless they have obtained permission from their doctor.
7. Ensure that the instrument is applied on moist skin and avoid the operation on dry skin.
8. Power off the instrument when not in use to ensure its safety.
9. If you are currently taking weight-loss drugs, please discontinue their use 1 - 2 months before using this instrument. Failure to do so may result in an extended course of treatment.
10. To maintain hygiene and extend the instrument's service life, sterilize it with saline.

2. Contraindications

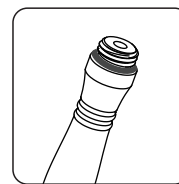
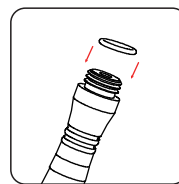
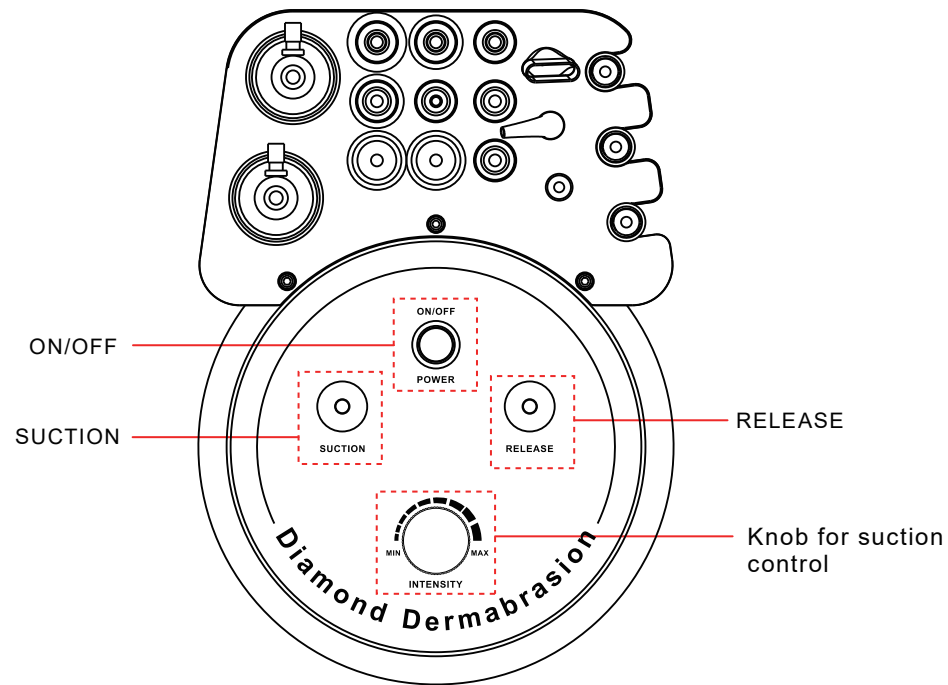
Before using this instrument, it is essential to consult your doctor or seek advice from professionals. Details below:

1. Pregnant or lactating woman.
2. Individuals with hypertension, heart disease, or a pacemaker installed.
3. Individuals with unhealed wounds or those in the recovery period from surgery.
4. Individuals suffering from epilepsy, severe diabetes, and hyperthyroidism.
5. Individuals suffering from malignant tumors, hemophilia, and hemorrhage.
6. Individuals with skin disease or infectious disease.
7. Individuals have had a cesarean section within six months, a miscarriage within three months, or a natural birth within two months.
8. For your safety, refrain from using if you've had plastic surgery or have implants/metal objects near the treatment area within 3 months.

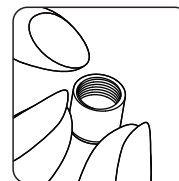
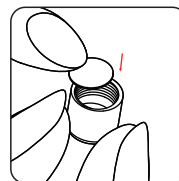
3. Overview

This 3-in-1 beauty machine utilizes the most advanced technology for deep cleansing and complexion brightening, promising the user a glowing and vibrant face. It provides the perfect solution for people seeking improvements in skin appearance without injections, drugs, or side effects. For external use with immediate effects.

4.Interface Function

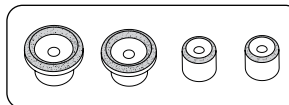


The black rubber ring must be correctly installed to prevent issues like no suction or weak suction.



Installing the cotton filter is essential as it helps prevent foreign particles from damaging the device and also indicates the cleansing effectiveness.

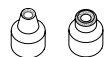
Choose the tip based on the size of the treatment area:



Large tips are for the large treatment areas like the area around the eyes, nose wings, cheeks, and body area.



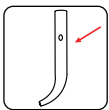
Round tips are used for the cleansing of the forehead, jaw, nose wings, cheek, and facial wrinkle removal.



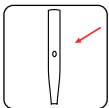
Pointed tips are used for blackhead and mite removal in the nasal folds, unclogging pores, and wrinkle removal.

Transparent glass tube:

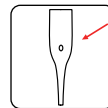
There are 3 transparent glass applicators. Insert one end of the hose into the suction hole on the main unit and the other end into the applicator. The applicator starts drawing in while blocking the hole with your thumb and stops drawing in while unblocking the hole.



The applicator indicated by an arrow is used for cleansing blackheads in small treatment areas.

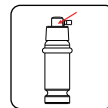


The applicator indicated by an arrow is used for cleansing clogged pores in small treatment areas.

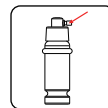


The applicator indicated by an arrow is used for massaging small areas.

Spray bottle:

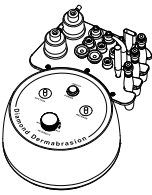
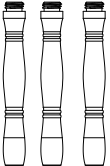


Unscrew the black cap and pour the liquid into the white bottle. The liquid can be pure water, toner, saline, watery serum, or any other suitable option based on your skin condition. It is recommended to fill the bottle halfway.



Insert one end of the hose into the release hole of the main unit and the other end into the location pointed by the arrow. Avoid inserting the hose into the suction hole, as this may cause damage to the machine.

5. Technical Specification

	Power supply Input: AC110V-220V 50HZ-60Hz	
	Power: 12W	Input Power: 12W
	Net Weight: 1.8kg	Gross Weight: 2.1kg
	Dimensions: 9.9 × 7 × 6 inches	
	Power: 12W	
	Vacuum: -73KPa	
	Airflow: 10LPM	
	Noise level: <60db (30cm away)	

6. Use Precautions

1. Strictly follow the instructions in the manual to use the instrument and train operator.
2. Before using the instrument, use a plug with a grounding pin and ensure the power socket is grounded.

3. Make sure the voltage of the instrument is adapted. If the local power supply voltage is unstable, we recommend adding a power-matched regulated power supply between the mains and the instrument.

4. The microdermabrasion tip must be connected to the suction hole (not the release hole) to prevent the machine from functioning abnormally.

5. The rubber ring must be correctly installed to prevent issues like no suction or weak suction.

6. The cotton filter is essential to prevent impurities from entering the tube and damaging the machine.

7. Keeping the skin moist contributes to a more comfortable experience.

7. Maintenance & Cleaning

1. Disconnect the power cord when not in use and store the instrument in a dry, cool, and well-ventilated place.

2. After use, rinse the microdermabrasion tip in saline, clean the transparent tube with a brush, allow them to air dry, and store them in a dry condition.

3. After cleaning the instrument, cover it with a dustcloth or plastic wrap. Before use, ensure to sanitize the handle again for hygienic reasons.

4. Disassembling the instrument and attempting to clean the inside is strictly prohibited. This task should only be performed by professionals.

8.FAQ

1.Will the skin get thinner and more sensitive after the microdermabrasion treatment?

A: No. The microdermabrasion treatment is a non-invasive procedure that targets only the aged stratum corneum. Since our skin naturally renews itself every 28 days, the microdermabrasion contributes to smoother, brighter, and finer skin without causing increased sensitivity.

2.Why do I need exfoliation?

A: The stratum corneum is the outermost layer of the epidermis, consisting of 15 – 20 layers of dead cells that can vary from different parts of the human body. The skin's metabolism cycle also varies among individuals of different ages. For example, the cycle is 28 days for teenagers, whereas for adults, it is the sum of their age plus 10. However, for a variety of reasons, the stratum corneum might not shed in a timely manner, resulting in an increased thickness of the stratum corneum, a dull complexion, and an impact on skin metabolism. In such cases, additional exfoliation is necessary.

3.Can I apply makeup immediately after a microdermabrasion treatment?

A: Yes, the treatment contributes to moisturized and plump skin, ensuring a perfect-blend makeup. Microdermabrasion is a non-invasive procedure that delivers fast, safe, and healthy results.

4.When can I expect to see results?

A: Immediately after the initial session, you will observe a noticeable improvement in your skin's clarity and transparency. Multi-sessions contribute to more visible effects including deeply hydrated skin, brightened complexion, reduced fine lines, and prevention of the aging process.

5.Is the microdermabrasion addicting?

A: No. Microdermabrasion is a skincare procedure that enhances skin condition and provides deep cleansing. It goes beyond mere treatment; it helps the skin absorb nutrients and addresses concerns like dullness, dehydration, rough texture, and wrinkles. Discontinuing it will simply allow the skin to return to its original state and aging process without any addictive effects.

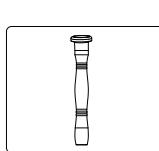
9.Ask & Answer

Ask		Cause		Answer
No suction.	→	The rubber ring is missing.	→	Put in a rubber ring.
	→	The rubber ring on the tip is excessively twisted, causing air leakage.	→	Loosen it slightly.

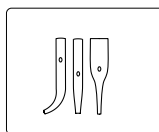
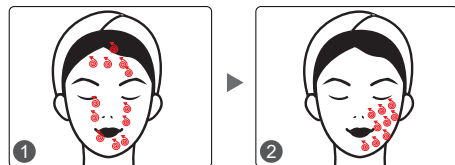
Ask	Cause	Answer
No spray comes out.	→ The spray head is clogged.	→ Clean the spray head with a needle.
	→ The rubber tube connecting the spray bottle is loose.	→ Secure the rubber tube.

10.Operation guide

Face:



Step 1:



Step 2:



Step 3:

11.Warranty & Support

We offer a one-year warranty on the main unit and a three-month warranty on components.

Product Name: Cleansing & Hydrating Machine

Product Model: SR-NF108

Production Date: _____

Quality Inspection: _____

