

## Skin detection cleaning instrument



Dear User.

Thank you for purchasing this product!

Please read this manual carefully before using this product to ensure its optimum performance and safety.

### Attention

This product must be used in strict accordance with the method of use in this manual, and the company shall be responsible for all consequences caused by misuse of methods other than the manual, and the company shall not bear any responsibility.

The Company makes no warranties of any kind, including (but not limited to) the sale and fitness of the Company for a particular purpose.

Implied Warranties. The Company is responsible for errors contained in this information, or for accidents caused by the provision, actual performance and use of this manual. or indirect damages are not liable. This manual contains proprietary material protected by patent law. All rights reserved, without the written consent of the Company, No part of this manual may be photographed, copied, reproduced or translated into any other language. The contents contained in the book can be used. changes without notice.

### Warning:

This is the 1 kind of beauty equipment.

If the beauty agency responsible for using this instrument cannot achieve a satisfactory operation plan, it will cause abnormal instrument failure, and may endanger personal health. At present, the company will provide circuit diagrams for a fee when requested by users, and a list of calibration methods will be provided. and other information to assist the user to have the appropriate, qualified technicians repair those instruments that the company classifies as serviceable by the user.

### Precautions for use of places

- 1) Please do not use and connect the socket, so as not to cause a fire;
- 2) When replacing the fuse, be sure to turn off the power switch to avoid fire and electric shock;
- 3)  $220V \pm 22V$ ,  $50HZ \pm 1 HZ$  power supply and effectively grounded socket must be used;
- 4) The use of damaged or processed power lines has the risk of fire and electric shock;
- 5) Do not bend or twist the power cord excessively to avoid fire and electric shock accidents;
- 6) When the instrument is loose or damaged, please contact the company in time;
- 7) Do not use this instrument in unstable environments such as tilt, vibration, impact, etc;
- 8) There can be no water or debris inside the instrument. In case of foreign matter entering, please contact our company in time;
- 9) The power plug must be unplugged when the instrument is moved;
- 10) When the instrument is moving, vibration should be avoided as much as possible;

### Warranty Service

#### Free Warranty

- 1) the purchase of products within 1 years of normal use of the state of failure can accept free service.
- 2) Free warranty only applies to the instrument body.

#### Items Excluded from Warranty within Free Warranty Period

Inability to benefit from pro bono services without complying with the instrument start-up procedures and safety and management matters expressly set out in this manual, Please pay attention to the following matters:

- 1) The damage caused by the movement of the instrument caused by pulling the wire is excluded from the free warranty period.
- 2) When the user uses the instrument or transforms it for other purposes, it is excluded from the free warranty period when it is disassembled.

#### Paid warranty

- 1) 1 year after the purchase of the instrument, the implementation of paid warranty, even within the warranty period due to consumer negligence or other natural disasters (Fire, salt damage, flood, impact, earthquake, lightning, etc.) caused by the instrument damage implementation of paid warranty.
- 2) Paid guarantees are as follows:
- 3) The instrument is damaged due to the unauthorized decomposition of the instrument by the consumer or due to careless use (water ingress, damage, etc.).

### Use taboo

- ① Do not operate on damaged skin, and do not build for customers with acute skin allergy and skin wounds.

The operation will cause skin tingling.

- ② Infectious skin problems cannot be done, which is easy to increase skin irritation.
- ③ heart disease, epilepsy, cancer patients do not do small bubbles, there are potential risks.
- ④ Those who have undergone minimally invasive filling and plastic surgery cannot do it, which may affect the filling.
- ⑤ People with metal stents in their bodies cannot do it, which may affect the therapeutic effect.

For the safety of mother and baby, it is not recommended for pregnant women.

- ⑦ hormone dermatitis people do it carefully, this is to avoid stimulation.

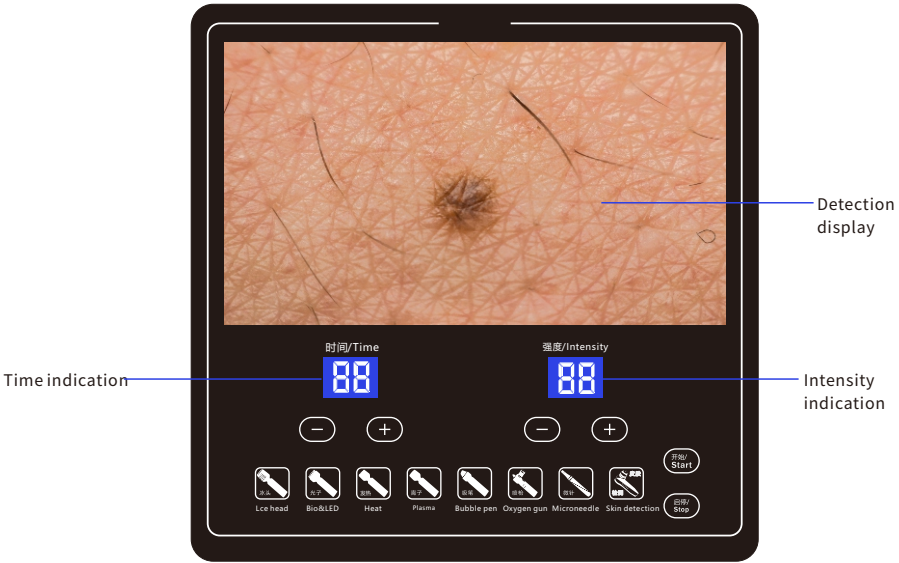
Safety instructions and maintenance

- After the instrument operation
- 1. Press the [shutdown button] to close the operation screen; Press the [power button] to turn off the power.
  - 2. Unplug the power cord from the power socket (it is forbidden to power on all the time).
  - 3. Clean the probe with 75% alcohol cotton and place the hand tool on the hand tool holder.
  - 4. Keep the instrument and related accessories in a safe place that children should not touch.

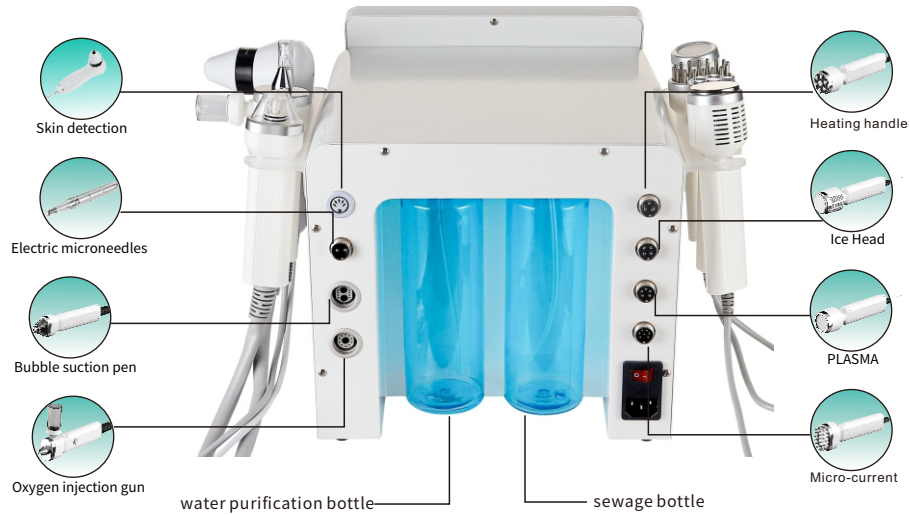
常见故障及故障排除方法

Problem point	Processing method
Power Light Inoperative	Confirm whether the power supply is connected properly/change a line to
No suction	Make sure that the suction modulation switch is set to the maximum
Will not spray	1. Confirm that the spray gun is adjusted to the maximum 2. Clean the spray gun
The screen won't light up	Contact the supplier after sales
Liquid leakage from spray gun	1. Adjust the spray gun to the minimum 2. Spray air hole upward

Introduction of accessories



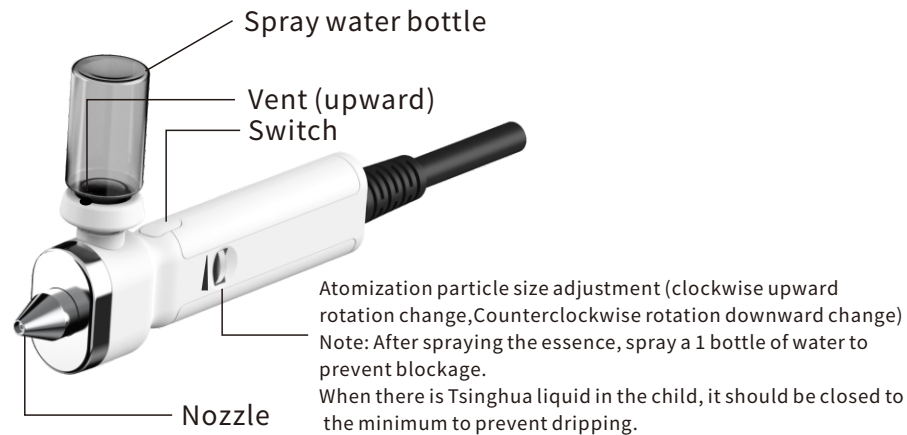
## Installation of the instrument



### Installation of hand tools

#### 1 Installation of spray gun pen and ion bubble pen

First, find the corresponding harness connection line and the corresponding plug, and align the plug with the open At the left snap position of the connecting hole, push it inward until it is fastened.

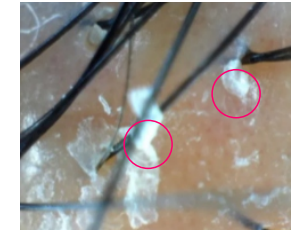


### Judging the health of the scalp

According to the hair follicle detection equipment presented by the scalp color, scalp condition, hair diameter, hair density, and hair follicle condition, can also help to determine the hair loss type of friends.



Healthy scalp color: bluish white, elastic, tough; Hair follicle: no blockage, hair follicle mouth was vortex-shaped, 1 There are 2 to three hairs in each hair follicle.



scalp peeling



Pore blockage  
The hair is blocked by grease



sensitive scalp  
Redness of the scalp can be seen



oily scalp  
Pores out of oil a lot



alopecia scalp  
Only one hair per pore



large pores



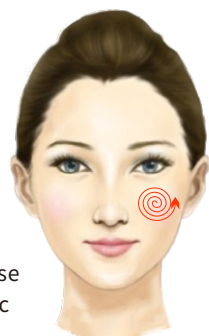
skin pigmentation



Pore blockage

## Description of interface operation contents

Ion cleaning (sterilization and mite removal:  
plasma is a 1 special current technology, the ozone generated can safely  
and effectively kill various bacteria and mites on the face)



### Methods:

Clean the parts to be operated

Adjust the right energy and time

First use the handle close to the skin, and then slowly increase  
the energy Use the probe to massage in circles on the specific  
area of the skin as needed.

(Note: The high-pressure ionization package will release ozone during the operation  
of the product. Ozone itself has a taste, which is a normal phenomenon, Ozone has  
bactericidal effect and will not cause damage to the body. Please feel free to use it.)

Time: The general default time is 15 minutes/time, which can be adjusted according  
to nursing needs.

## scalp/hair follicle/skin detection



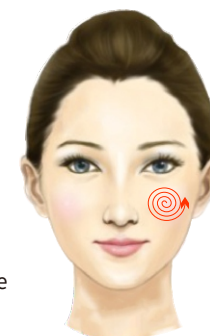
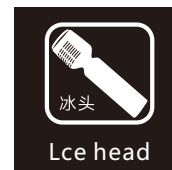
### Methods:

Use the probe to press against the skin where it is needed

Press the camera button on the handle to take a picture

## Description of interface operation contents

Refrigeration head (reduce redness, shrink pores)



### Method:

Clean the area to be operated

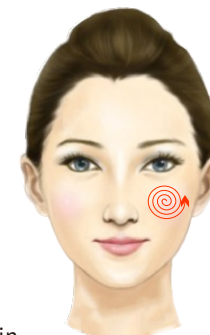
Adjust the appropriate energy and time

Massage with the probe in a circle on the specific part of the  
skin required

Temperature: The temperature parameter is 1 - 20 grades,  
which can be adjusted according to the demand;

Time: the general default time for 15 minutes / times,  
according to the needs of care self-adjustment

## Heat handle, reduce fine lines, increase glue source protein



### Methods:

Clean the parts to be operated After applying the essence

Adjust the right energy and time Use the probe to massage in

circles on the specific area of the skin as needed. Time: The  
general default time is 15 minutes/time, which can be adjusted  
according to nursing needs.



## Description of interface operation contents

Micro-electricity & color light (micro-current massage, improve cell permeability)



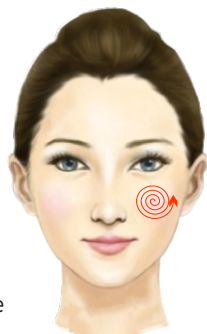
### Methods:

Clean the parts to be operated

After applying the essence

Adjust the right energy and time

Use the probe to massage in circles on the specific area of the skin as needed.

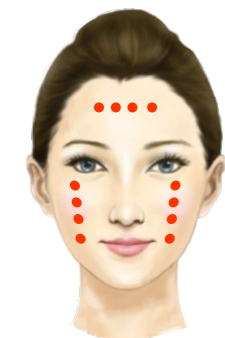


Time: The general default time is 15 minutes/time, which can be adjusted according to nursing needs.

## Bubble pen (deep cleaning pores dirt)



Air adjustment rotary knob (on the figure): the right rotation of the water flow to reduce, Left swirling water flow increases. (Depending on the need for care) Time: the general default time is 15 minutes/time, according to the protection Adjust the demand by yourself, and use the probe to lift the required skin.



water flow regulation

## Description of interface operation contents

Electric microneedle introduction instrument  
(import nutrition, shrink pores)



### Methods:

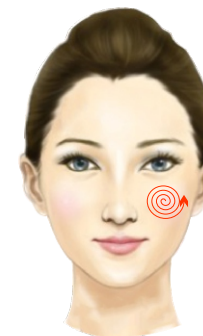
Clean the parts to be operated

After applying the essence

Adjust the right energy and time

Use the probe to massage in circles on the specific area of the skin as needed.

Time: The general default time is 15 minutes/time, which can be adjusted according to nursing needs.



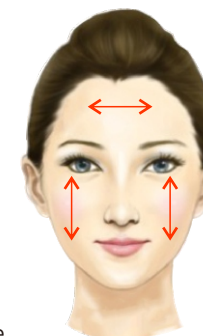
## Ion spray gun pen



### Methods:

Pour the diluted essence into the can on the spray gun and click the spray gun button (You can also press the start on the handle) Adjust the spray size Aim the gun at this location and start operating. If the nozzle is clogged, use the spray handle to unclog the needle from the nozzle to remove impurities.

Time: The general default time is 15 minutes/time, which can be adjusted according to nursing needs.



(Rotate up to make the spray smaller and smaller, rotate down to make it bigger)