

# Hydrogen Oxygen

6 in 1 hydrafacial machine

## Manual



Hereby declare that:

This instrument is for life beauty and can not be used in the field of medical beauty.



Foreword


First of all let us express my heartfelt thanks to the customers who purchased the equipment of our company. This manual is written for the customer to make better use of this instrument. I hope the company's products and services bring you respected courtesy.

Notice

This product must be used in strict accordance with the method of use in this manual, if you abuse use of methods other than abuse of instructions caused by all the consequences of their own responsibility, the company does not assume any responsibility. The Company makes no warranty of any kind, including (but not limited to) implied warranties of merchantability and fitness for a particular purpose. The Company assumes no responsibility for errors contained herein or for incidental or consequential damages in connection with the furnishing, performance or use of this manual. This manual contains proprietary information that is protected by the patent laws. All rights reserved. No part of this manual may be photocopied, photocopied, copied or translated into another language without the written consent of the company. The contents of the manual can be changed without notice to the user.

Manufacturer's responsibility

The Company is only responsible for the safety and reliability performance of the instrument in the following cases: assembly operation, readjustment, improvement and maintenance are carried out by personnel recognized by the Company, the relevant electrical equipment complies with the national standards, and the equipment Follow the instructions.

 Admonition

This is a beauty instrument. If a cosmetic institution that holds the responsibility for using this instrument fails to achieve a satisfactory set of operating procedures, it can cause an abnormal instrument failure and may be dangerous to human health. At this time, our company will provide a circuit diagram at the request of the user for a fee, with a separate list of calibration methods and other information to assist the user in repairing parts of the instrument that are classified by our company as user-serviceable by qualified and qualified technicians.

Assurance









Manufacturing process and raw materials: The Company guarantees that the instrument (except for parts) is under normal use and maintenance status and has no production process and raw material failure within one year from the date of shipment.

In this manual

This user manual contains all general information about this instrument. This is the starting point for new users to get started with the instrument because it gives a general introduction to the system, explains how it works, describes the instrument installation and various methods of operation. Through the directory to find the information you need. This manual is to familiarize this instrument for you, And let experienced in the use of beauty equipment operating personnel to read.

Please be safe to use

The following symbols are used in the instrument and manual. In order to use the instrument correctly, to prevent harm to the operator and the patient, to protect the instrument from being damaged, so as to avoid the property damage, please pay attention to the type and meaning of the following symbols.

 Admonition	Indicates that deaths and serious injuries can occur as a result of operational errors		The mark indicate mandatory items
 Danger	Indicates that deaths and serious injuries may occur due to operational errors		The mark indicates that the project is prohibited
 Notice	Indicates that personnel may be injured and the instrument malfunctions due to incorrect operation		The mark indicates the item of attention
 Notice	Please check the manual		
Remind	Reminding notice, emphasizing important information		
	It indicates that the type of protection the device belongs to is B type		



## 1. Matters needing admonition

### 1.1 Precautions for the use of places

#### Admonition

- 1) Do not use merge even sockets, so as to avoid fire;
- 2) When replacing the fuse must be turned off the power switch, so as to avoid fire, electric shock;
- 3) Must use 220V  $\pm$  22 V, 50HZ  $\pm$  1 HZ power supply and ground socket
- 4) The use of damaged or processed power cord there is a risk of fire, electric shock;
- 5) Do not over-bend, twist the power cord, in order to avoid fire, electric shock accident;
- 6) When the instrument is loose or damaged, please contact the company in time;
- 7) Do not use the instrument in unstable environment such as tilt, vibration, impact;
- 8) The instrument can not have water or debris inside, in case of foreign body, please contact with the company;
- 9) when you moving the instrument must be unplugged power plug
- 10) The instrument should be moved to avoid vibration;
- 11) The instrument should be placed in a stable place, leaving at least 5cm above the space to ensure that air circulation, conducive the instrument to radiating;
- 12) The instrument can not cover anything to prevent the vents blocked;
- 13) Avoid using the instrument in the following environment: sunlight exposure; high humidity environment; near-water environment; vibration, inclined place; strong magnetic field environment; electromagnetic wave, impact voltage place; chemical storage place, there Corrosive gas sites;
- 14) This instrument may not be placed in the vicinity of radios, televisions, copiers, fax machines, etc. ;
- 15) Can not be used together with other instruments (such as microwaves), so as to avoid mutual interference between instruments, causing misoperation.

### 1.2 Precautions before use

#### Admonition

- 1) Be sure to read the instruction manual carefully before turning on the machine. The operator must be familiar with the operating instructions and operating methods, the equipment must be managed by a person;
- 2) Set the operating parameters under the guidance of professionals to set up;

#### Notice

- 3) before use to confirm whether the instrument is in normal operation;
- 4) Make sure whether the ground wire connection is correct;
- 5) Make sure all the wires are connected and safe;
- 6) When used in conjunction with the instrument, it must be used properly, or it may be dangerous and must be very careful.

### 1.3 Precautions in use

#### Admonition

- 1) When the instrument or patient is abnormal during the operation, the operator immediately depart the operation handle to the patient, presses the stop switch, and stops the use of the instrument

#### Notice

- 2) During the operation of the instrument, it is necessary to constantly observe the situation of the beauty guest and the instrument and keep an eye on whether any abnormal situation occurs;
- 3) Pls let correct use of the instrument by a skilled operator should not be used by personnel other than the operating technician.



## 1.5 Precautions after use

### Notice

- 1) After the operation, the control handle is returned to the control handle rack.
- 2) The operating handle should be cleaned after use the probe, ready for the next use

## 1.5 failure, storage, inspection precautions

### Admonition

- 1) Do not use when the instrument is abnormal. In case of smoke burning smell, can not operate the case, if continue to use, there is the danger of disaster electric shock. Please quickly press the stop button, turn off the power, unplug the power plug, and immediately contact the company or distributor;
- 2) if it is not a technician. Absolutely can't repairable and refit the instrument, The inside of the instrument must not be taken apart

### Notice

- 3) pls regularly to check instruments and components
- 4) Do not use cleaning tools that damage the instrument protective coating, such as brushes and brooms;
- 5) If the instrument is not used for more than 2 weeks, the instrument must be carefully inspected before it can be used again.

## 1.6 Admonition and prompt instructions

### Admonition

When the high-frequency equipment and this instrument are connected to the same patient at the same time, the electrode position of the instrument may cause burns to the skin tissue of the patient, and the instrument may also be damaged easily. When using the instrument near HF or microwave equipment (1m), the output of the instrument may not be stable due to microwave interference. The use of electrodes near the chest increases the risk of heart fibrillation.

## 2. Contraindications

- 1, Sensitive skin, severe acne
- 2, Cardiac rhythm device, implantable cardiac defibrillator or other electromagnetic implantable medical device
- 3, Severe diabetes, high blood pressure and high cholesterol
- 4, Have Skin contagion`s sick person



### 3. Introduction of Instruments



### 4. Instrument Installation Instructions

#### 4.1 Unpacking and Checking

4.1.1 Carefully take out the instruments and accessories from the packing box and keep the packing materials for future transportation or storage. Check the accessories according to the packing list.

4.1.2 Check for any mechanical damage.

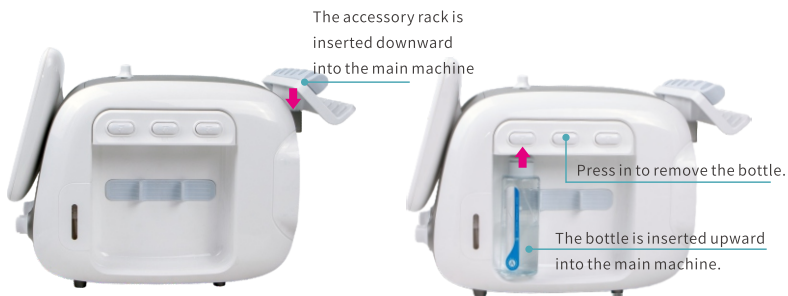
 **Notice:**

If you have any questions, please contact our sales department or agent immediately.

4.2 The instrument shall be placed in a clean and ventilated room with a temperature of 5°C~40°C, and a humidity of not more than 80%, so as to avoid direct sunlight. Make sure that the vent is not blocked and that there is at least 5cm of clearance around the instrument. Remember not to place objects on the instrument, even if it is temporary, it is not allowed.

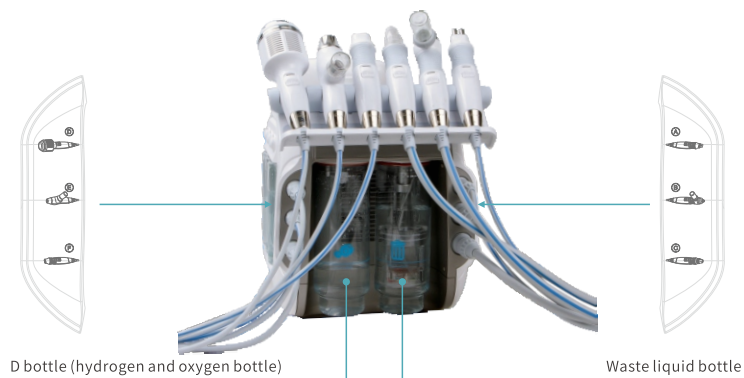
4.3 Insert accessories into the corresponding interface according to the text and pattern information prompts beside the instrument output interface. Then place the accessories neatly on the accessory rack.





Installing accessory holder

Install bottles A,B,C



Installing and placing handles

Remove the bottle



Installing bottles

Follow the direction of the arrow on the bottle to install or remove the bottle.



Notice:

- Please pour out the liquid in bottles A, B, C, D and waste liquid bottles before handling the instrument, otherwise the liquid will enter the instrument during handling, causing damage to the instrument.







Notice:

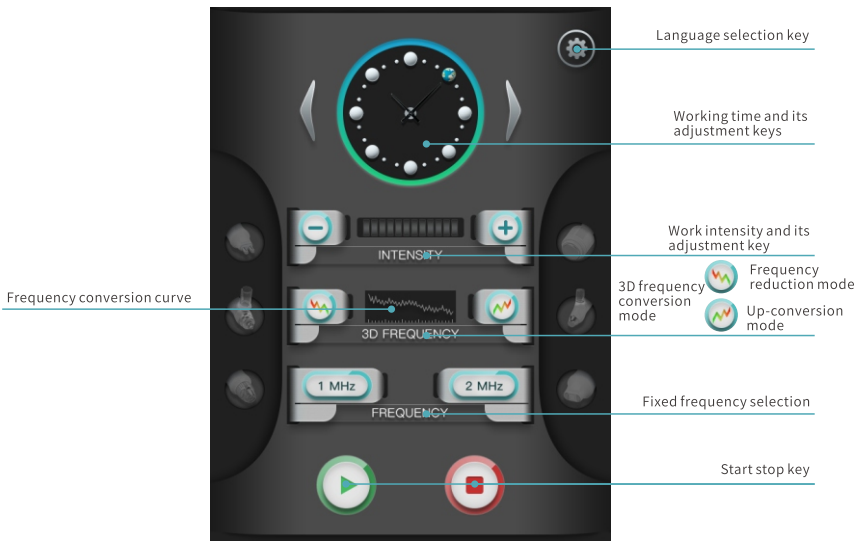
During use, if the instrument beeps, observe whether the icon of the waste liquid bottle on the interface blinks. If there is flicker, please discard the waste liquid in the waste liquid bottle first, and then reinstall it before use.




5. Handle Operation Methods and Steps

Handle status		The handle interface is not inserted into the host output port.
		The handle interface is inserted into the output port of the main machine, and the handle is placed on the accessory rack.
		The handle interface is inserted into the output port of the main machine, and the handle is removed from the accessory rack for use.
		The handle interface is inserted into the output port of the host, and the handle abnormality is detected.

5.1 Use of 3D Variable Frequency RF Handle

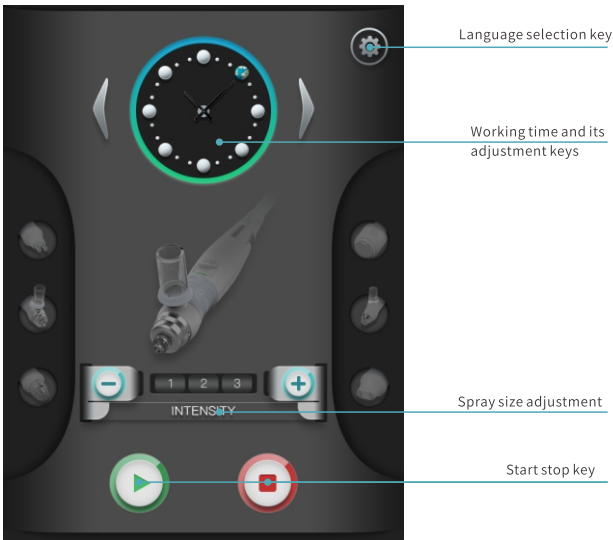


- 5.1.1 Clean the parts that need to be operated;
- 5.1.2 Apply appropriate amount of gel to the parts needing operation;
- 5.1.3 Adjust working time and intensity, and select 3D frequency conversion mode and fixed frequency;
- 5.1.4 Close the working head to the operated part and click the start button on the screen.
- 5.1.5 According to the line of the action part, make a circle to operate.

 **Note:**  
During operation, it is necessary to keep the handle constantly moving at the operation site and not stay in the same place for too long to avoid skin damage.



5.2 Use of Nano Spray Handle



- 5.2.1 Clean the parts that need to be operated;
- 5.2.2 Pour the diluted essence into the container on the spray handle;
- 5.2.3 Adjust the spray size;
- 5.2.4 Align the spray handle with the operating part and press the start key to start the operation.

If the nozzle is blocked, use a long needle given at random to dredge it.

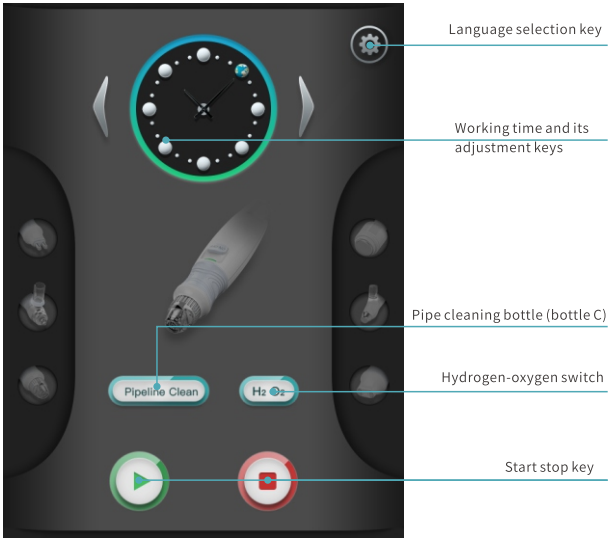
Nano spray handle

Suction and injection switching valve

Before use, the changeover valve must be rotated to the direction of the nano spray handle, otherwise the function cannot work normally.

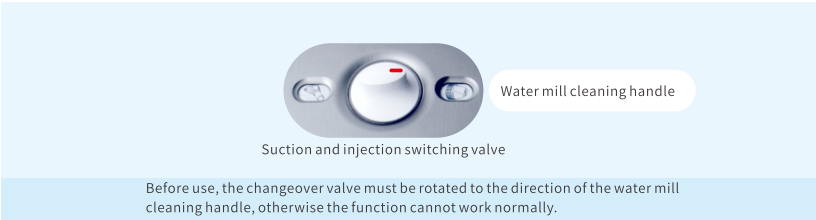


5.3 Use of Water Mill Cleaning Handle

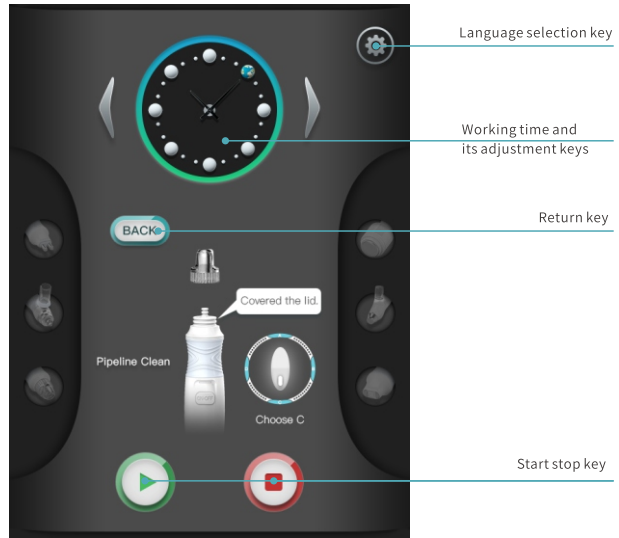


5.3.1 Use bottle A or bottle B

- 1) Remove makeup and clean it.
- 2) selecting a suitable adsorption head according to skin; Select A or B solution, pour it into the corresponding A or B bottle, dilute it with appropriate amount of purified water, and then install the bottle on the main machine.
- 3) Turn the knob on the main machine to A or B.
- 4) Adjust the negative pressure intensity and water flow (instrument side) and then operate.



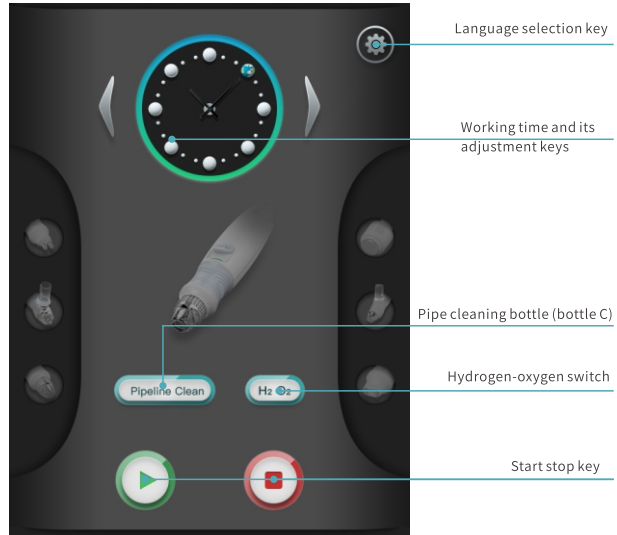




### 5.3.2 Use Bottle C

- 1) Select C solution, pour it into bottle C, dilute it with proper amount of purified water, and then install the bottle on the main machine.
- 2) Click the pipeline cleaning button on the screen to enter the pipeline cleaning interface.
- 3) According to the prompt on the screen, turn the knob on the main machine to C, cover the special adsorption head for cleaning the pipeline, and click the start button to automatically clean the pipeline.



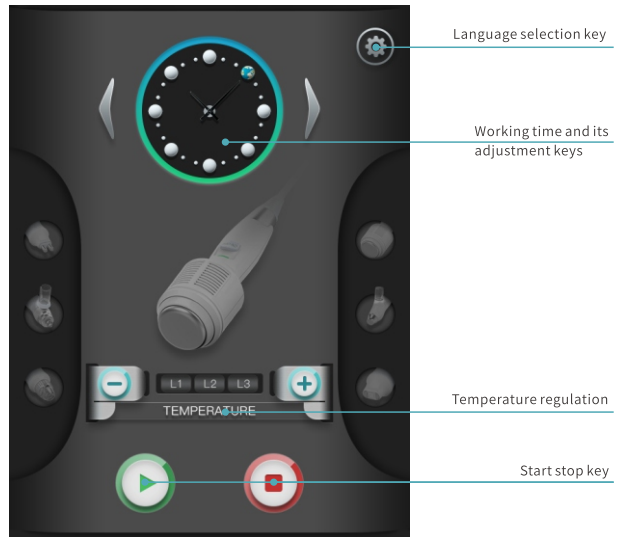


### 5.3.3 Use Bottle D

- 1) Remove makeup and clean it.
- 2) selecting a suitable adsorption head according to skin; Choose D solution, pour it into bottle D, dilute it with proper amount of purified water, and then install the bottle on the main machine.
- 3) Turn the knob on the main machine to D, click on the hydrogen and oxygen bottle button, and reuse it after a period of time.
- 4) Adjust the negative pressure intensity and water flow (instrument side) and then operate.



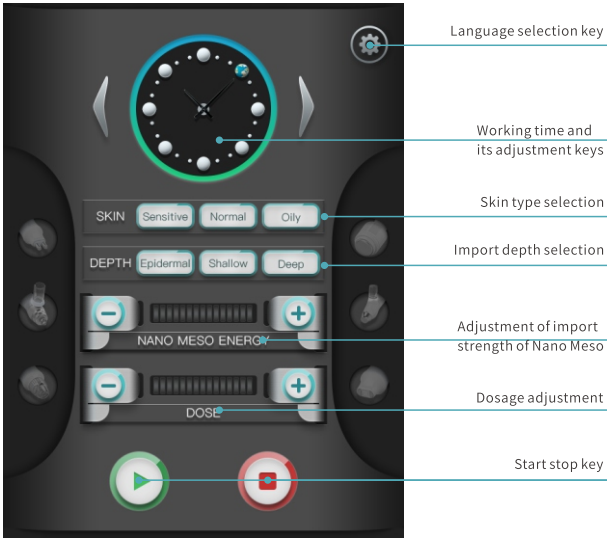
## 5.4 Use of Cold Superconducting Handle



- 5.4.1 Clean the parts that need to be operated;
- 5.4.2 Press the start key;
- 5.4.3 Operate the front end of the handle contacting the active part;



5.5 Use of Namco Plastic Guide Handle



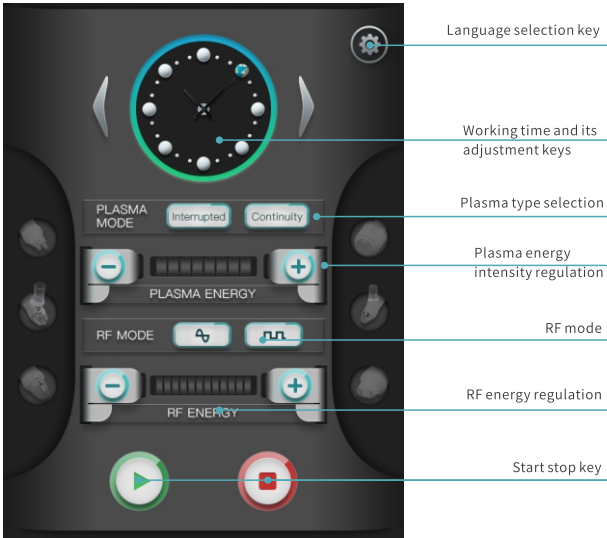
- 5.2.1 Clean the parts that need to be operated;
- 5.2.2 Pour the diluted essence into the container on the spray handle;
- 5.2.3 Adjust relevant parameters;
- 5.2.4 The handle is tightly attached to the operation part and the start key is pressed to start the operation.

 Note:

During operation, it is necessary to keep the handle constantly moving at the operation site and not stay in the same place for too long to avoid skin damage.



5.6 Use of Plasma RF Handle



- 5.6.1 Clean the parts that need to be operated;
- 5.6.2 Apply appropriate amount of gel to the parts needing operation;
- 5.6.3 Adjust relevant parameters;
- 5.6.4 Close the working head to the operated part and click the start button on the screen.
- 5.6.5 According to the line of the action part, make a circle to operate.



Note:

During operation, it is necessary to keep the handle constantly moving at the operation site and not stay in the same place for too long to avoid skin damage.



## 6. Matters of attention

### Notice

- 6.1 After treatment, within 24 hours, do not use irritating skin care, cosmetics, and pay attention to sunscreen
- 6.2 Continuously use moisturizing mask for 1 week.
- 6.3 Must not use the evigation pen for the people who have thin cuticle or much red blood on cheekbone.
- 6.4 When the RF video is operating, the people, who are with thin cuticle or much red blood on cheekbone, shouldn't take too long time.
- 6.5 People with severe anaphylaxis or severe acne can't operate with that.

### Admonition

If the patients feel discomfort, stop the machine by pressing manual control to ensure safety.

## 7. Keeping in good and maintenance

### 7.1 Keeping in good

#### 7.1.1 Daily inspection

The manager must check the instruments and assembly units.

- a) If the power socket isn't connecting with the ground, change power socket.
- b) electric wires are deformation, rupture or disconnection with the naked eyes. If there are, it may lead to fire disaster. Please replace the new electric wire immediately.
- c) control handle is abnormal or broken with the naked eyes, and whether the output lines are bad or deformed, if there are, please replace them immediately.
- d) Please check whether the tooltip is correct before the use of the instrument. Please stop to use it if the tooltip is wrong.

#### 7.1.2 Cleansing

When the instrument is cleaned, the dust must be wiped with dry and soft cloth, and the smudginess is wiped with a soft wet cloth. The power switch must be switched off and the power line must be cut off before cleaning the instrument

#### 7.1.3 Replacement of fuse

- a) The specifications of power fuse 8A( $\Phi 5 \times 20$ mm)
- b) When replacing the fuse, please base on the following steps:
  - 1) Turn off the power switch;
  - 2) Unplug the power plug;
  - 3) Open the fuse shell with a screwdriver.
  - 4) Take out the damaged fuse and replace the new fuse.
  - 5) Put the fuse shell back to its original position;
  - 6) Plug the power plug;

### Admonition

When replacing the fuse, please turn off the power supply and unplug the power plug to prevent electric shock.

- 7.1.4 The instrument used for a long time (more than one year) should be maintained by professional maintenance personnel to clean the internal ash stains.
- 7.1.5 The instrument should be placed in a ventilated and dry place, and be covered with a dustproof cover when it is not used.



## 7.2 Maintenance

- 7.2.1 After purchasing the instrument, fill in the warranty card and send it to the manufacturers or agents. Then warranty effect come into being; if there is any quality problem, main engine will be free warranty for one year since the date of the note issued by the purchaser. (Note: show the note and warranty card when maintaining; the warranty is limited to the main engine, except for parts and other consumables that need to be replaced regularly.
- 7.2.2 Beyond the warranty period, please directly contact with the manufacturer to provide service guarantee.
- 7.2.3 When the instruct shall be maintained, please contact with our customer or dealer. Do not repair yourself. Once opened, the company will not be responsible for warranty.

## 8. Common trouble and the methods of trouble clearing

- 8.1 When the instruments are unable to work properly, do not disassemble and install by yourself. There should be getting in touch with the customer service department or distributor of the company to find out the reasons for the trouble.
- 8.2 Before asking for the maintenance service, please check the instrument with following tips and see if you can handle the trouble by yourself.

Failure phenomenon	Cause	Methods of eliminating and solving
There is no reaction after the boot	Unplug the power plug; The power switch is turned off; Power supply fuse breaks.	Whether the power plug is plugged in the socket or not;
Handle can't work properly	Do not press the start button Incorrect installation of the probe Work head has been damaged Incorrect installation of the connectors behind the instrument	Press the start button Check whether the installation of the probe is correct Replace work head or silicone loop Reinstallation instrument
Leak liquid	The sealed silicone rubber ring is damaged or missing. Installation instruction improperly	Replace the silicone rubber ring  Return to the manufacturer for rework

## 9. Responsibility of the manufacture

- 9.1 The products should meet the standard of the product. If they are not, our company is responsible for the replacement and return of the instruments.
- 9.2 Our company is responsible for the damage to the person and property caused by the defects of the products, except for the following cases:
- a) Purchasers and operators do not use the productions according to the instructions, the safety precautions and warning instructions.
- b) Violate the provisions of the transportation, installation, use, maintenance, storage and other provisions.
- 9.3 Our company promises lifetime maintenance and technical service to the product. The quality problems, which occur in the period of the stipulated quality guarantee, will be repaired for free.

## 10. Replacement of parts.

When the parts are replaced they must be purchased from our company .

## 11. Storage and transportation

- 11.1 Storage: when the instrument is stored, it should be placed in the original packing box and placed in a well ventilated clean room. The packing box should be high with the ambient temperature of -10℃ to 40℃, and the relative humidity is no more than 93%. No harmful gases, inflammable and explosive materials, and corrosive gases.
- 11.2 Transportation: the instrument, under the packaging conditions, is suitable for highway, railway, aviation and waterway. In the process of handling and transportation, there shouldn't be severe vibration and shock. They can't be damp and mustn't mix them with flammable or corrosive material. The specific requirements are according to the purchase contract.

## 12. Service life

- 12.1 The warranty period for this instrument is 1 year.(Note: except for man-made damage)
- 12.2 The warranty period of parts is 3 months.(Note: except for man-made damage)
- 12.3 Using the instrument, which has beyond the service life, should be approved by the engineer, and the instrument should be periodically inspected by the engineer on performance during the subsequent use.
- 12.4 Discarded instruments and parts, which are beyond the service life, should be handled in accordance with the relevant local regulations.



**Guarantee Card**

Model Name:	<input type="text"/>	Item Number:	<input type="text"/>
Production Date:	<input type="text"/>	Manufacturing Number:	<input type="text"/>

- 1, From the date the client purchases this machine (bill to order), if the machine has any quality problems but good in appearance in 7 days, the client could exchange the broken one into a new one. The host has a two-year guarantee (except the vulnerable parts). If the machine is out of guarantee range or guarantee date, our factory also can take charge of the maintenance and update, on condition that the client should pay the maintenance cost. And please note that, if the machine need to send back to the factory for maintenance, the buyer and the supplier should afford both part of the shipping fee. The buyer should afford all the shipping fee over one-year purchase.
- 2, The following faults caused by personal wrong usage are not included in the guarantee range:
- ① Arbitrarily take apart and refit the machine;
  - ② Fault of falling down careless;
  - ③ Fault of not taking good care of the machine;
  - ④ Fault of wrong usage.

The Client Name :	<input type="text"/>	Purchasing Date :	<input type="text"/>
Address :	<input type="text"/>		
Contact Number :	<input type="text"/>		

Retailers Name :	<input type="text"/>	Contact Number :	<input type="text"/>
Address :	<input type="text"/>		
Contact Number :	<input type="text"/>		

Maintenance Records	Maintenance Date :	<input type="text"/>	<input type="text"/>	<input type="text"/>	<input type="text"/>	Repair Date :	<input type="text"/>	<input type="text"/>	<input type="text"/>	<input type="text"/>	<input type="text"/>
						Quality Testing Date :	<input type="text"/>	<input type="text"/>	<input type="text"/>	<input type="text"/>	<input type="text"/>
Failure Reason :	<input type="text"/>					1	Client Name :	<input type="text"/>			
Processing Method	<input type="text"/>						Contact Number :	<input type="text"/>			
and Result :	<input type="text"/>						Delivery Address :	<input type="text"/>			

Maintenance Records	Maintenance Date :	<input type="text"/>	<input type="text"/>	<input type="text"/>	<input type="text"/>	Repair Date :	<input type="text"/>	<input type="text"/>	<input type="text"/>	<input type="text"/>	<input type="text"/>
						Quality Testing Date :	<input type="text"/>	<input type="text"/>	<input type="text"/>	<input type="text"/>	<input type="text"/>
Failure Reason :	<input type="text"/>					2	Client Name :	<input type="text"/>			
Processing Method	<input type="text"/>						Contact Number :	<input type="text"/>			
and Result :	<input type="text"/>						Delivery Address :	<input type="text"/>			

Maintenance Records	Maintenance Date :	<input type="text"/>	<input type="text"/>	<input type="text"/>	<input type="text"/>	Repair Date :	<input type="text"/>	<input type="text"/>	<input type="text"/>	<input type="text"/>	<input type="text"/>
						Quality Testing Date :	<input type="text"/>	<input type="text"/>	<input type="text"/>	<input type="text"/>	<input type="text"/>
Failure Reason :	<input type="text"/>					3	Client Name :	<input type="text"/>			
Processing Method	<input type="text"/>						Contact Number :	<input type="text"/>			
and Result :	<input type="text"/>						Delivery Address :	<input type="text"/>			