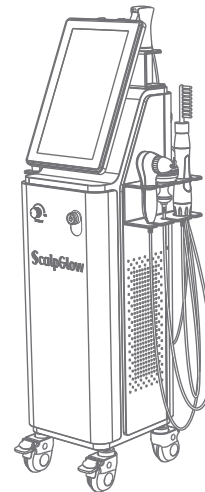


# User Manual ScalpGlow

PS-88K1



# Content

EN

1.Overview	1
2.Precautions	3
3.Contraindications	4
4.Product Specifications	4
5.Packing List	5
6.Operating Instructions	7
· Installation Instructions	7
· Control Panel Introduction	9
7.Troubleshooting	16
8.FAQ	17
9.Treatments Introduction	18
9.1 Dry Scalp	19
9.1.1 Efficacy	
9.1.2 Suitable Candidates	
9.1.3 Operation Steps	
9.2 Oily Scalp	22
9.2.1 Efficacy	
9.2.2 Suitable Candidates	
9.2.3 Operation Steps	
9.3 Mixed Scalp	25
9.3.1 Efficacy	
9.3.2 Suitable Candidates	
9.3.3 Operation Steps	

9.4 Sensitive Scalp	28
9.4.1 Efficacy	
9.4.2 Suitable Candidates	
9.4.3 Operation Steps	
10.Treatment Schedule	31
11.Post-treatment Care	32

# Preface

Dear User:

Thank you for choosing ScalpGlow, our latest innovation in professional scalp care. This device is intended for use by trained professionals, as improper operation may lead to unintended effects. Please read this manual thoroughly and adhere strictly to the provided guidelines to ensure safe and effective use.

We are confident in the high quality of ScalpGlow and believe it will bring you outstanding results. Additionally, our dedicated after-sales service team is always available to assist with any questions or concerns.  
Thank you!

## Overview

ScalpGlow is an advanced scalp care device designed for those who seek improved scalp and hair health. This easy-to-operate, versatile device effectively enhances scalp condition and supports hair growth. The key functions of ScalpGlow include:

**HD Scalp Analyzer:** Uses high-definition micro-imaging technology to magnify the scalp up to 200 times, clearly revealing issues such as clogged follicles, oil secretion, and dandruff, while enabling real-time scalp and hair health monitoring.

**Micro Bubble Generator:** Applies high pressure to produce micro-bubbles that enable scalp cleansing products to cover the scalp thoroughly, providing deep, comprehensive cleansing.

**Scalp Sprayer:** Delivers high-pressure refinement of products for deep scalp absorption, ensuring effective product penetration and thorough cleansing.

**Spray Gun:** A metal spray gun utilizes air pressure and nutrient solutions to remove deeply embedded dirt. High-speed airflow provides oxygen and water molecules, removing free radicals while hydrating and cleansing the scalp.

**Vacuum Scalp:** Uses strong suction to draw out impurities from the deeper scalp layers, achieving an effective deep-cleaning outcome.

**High Frequency:** Generates thermal effects to boost scalp blood circulation, enrich nutrient supply, and offers ozone-based disinfection and sterilization.

**Iontophoresis:** Enhances nutrient absorption through low-intensity electrical current. Charged nutrient solutions are delivered via electrodes, forming a closed circuit to optimize delivery deep into tissues.

**Bionic LED Brush:** Combines EMS scalp physiotherapy with low-frequency microcurrents to stimulate scalp blood flow, promote nutrient delivery, activate hair follicles, reduce tension, and prevent hair loss. Electroporation technology applies high-intensity electrical impulses to create temporary pores in cell membranes, allowing direct entry of larger molecules. Red LED light supports scalp metabolism, prolongs the growth phase, reduces hair loss, and balances oil production.

## Precautions

- 1.This device is guaranteed by the designated after-sales service unit.
- 2.Use this product at ambient temperatures between 16°C and 35°C, do not place the device in a high-temperature environment, as this may affect the service life of the device and normal use.
- 3.Clean the instrument with saline after use and store it properly to extend its service life, do not use alcohol or alcohol contained product to wipe the instrument.
- 4.Always use the designated accessories provided or recommended by the original manufacturer to ensure the performance of the device and sustain its lifetime.
- 5.Do not use the device on the eyes, thyroid, parathyroid, testicles, abdomen of pregnant women and pacemaker.
- 6.Remove all the metal objects from your body to avoid unpredictable situations or affect the treatment before starting.
- 7.Please turn off the power of the device when not in use, and make sure to turn off the general power of the device before leaving after daily use to ensure the safety of the device.
- 8.Individuals who have had a cesarean section or surgery within the last six months, a miscarriage within the last three months, or a natural birth within the last two months should refrain from using this instrument. Women in periods of menstruation, pregnancy, or lactation should refrain from using this instrument.

## Contraindications

This product is not intended for individuals with any of the following conditions:

- 1.Severe scalp disorders, including scalp eczema, psoriasis, or dermatitis
- 2.Recent scalp injuries, such as cuts, burns, or any open wounds
- 3.Pregnancy or breastfeeding
- 4.Bleeding tendencies or blood disorders
- 5.Recent chemotherapy treatment
- 6.Fungal or bacterial infections of the scalp
- 7.Chronic, infectious, oncological, or mental diseases in an active phase
- 8.Advanced age

## Product Specifications

Product Name: ScalpGlow		Product Model: PS-88K1	
Shell material: Metal plate		Handle material: Metal & ABS	
Screen size: 15.6 inches	Input voltage: 110V/220V 50~60Hz		Rated power: 65W
Product dimensions: 45cm*41cm*121cm(17.7"*16.1"*47.6")			
Packing dimensions: 111cm*55.5cm*39cm(43.7"*21.9"*15.4")			



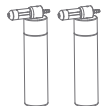
## Packing List



ScalpGlow Main Unit\*1



HD Scalp Analyzer\*1



Scalp Sprayers\*2



Vacuum Scalp\*1



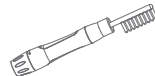
Micro Bubble Generator\*1



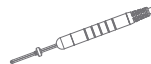
Spray Gun\*1



Vacuum Scalp Tips\*6



High Frequency\*1



Iontophoresis\*1



Iontophoresis Rod \*1



Bionic LED Brush\*1



Black Hoses\*3



Hex Screws\*10



Handle Holders\*3



Fuses\*4



Hex Wrench\*1



Power cord \*1



User Manual\*1

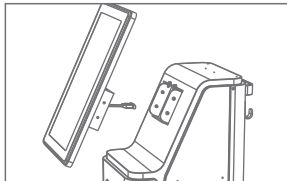
### Note: ⚠

Make sure the packaging is complete before use, then remove all packaging materials and confirm that all device accessories are complete.

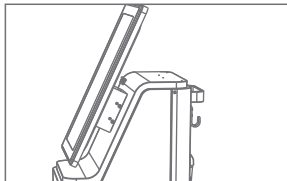
# Operating Instructions

## 1. Installation Instructions

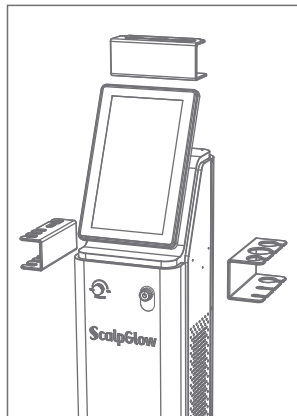
1. Connect the screen cable to the main unit.



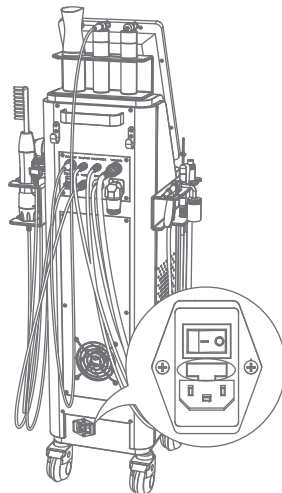
2. Attach the screen to the main unit and securely screw it in place.



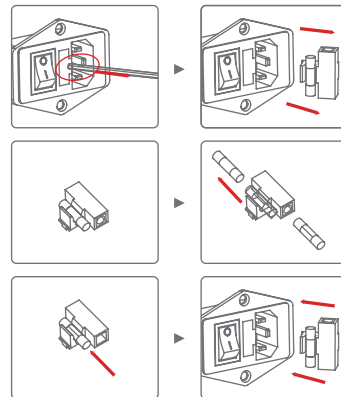
3. Screw three handle holders onto the main unit.



4. Place all handles into their holders and connect them to the main unit.



## Fuse Replacement



### High Frequency Handle:

Rotate the tail to adjust the energy level.  
Turn clockwise to decrease and  
counterclockwise to increase the energy.

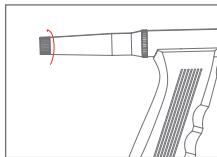


#### Note : ⚠

The high-frequency handle requires an external power supply and is not connected to the main unit.

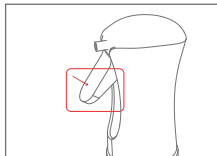
### Spray Gun:

Rotate the tail knob to adjust the mist level.



### Micro Bubble Generator:

Press the trigger to adjust the volume of foam.



### Mode Instructions

Handle	Mode Selection		Time Range	Energy Range
Bionic LED Brush	EMS	EL	0-60mins	0-10 levels
Iontophoresis	ION+	ION-	0-60mins	0-10 levels
Spray Gun	/	/	0-60mins	/
Vacuum Scalp			0-60mins	/
HD Scalp Analyzer	Capture and store up to 6 photos		/	/
Scalp Sprayer	/	/	0-60mins	/
Micro Bubble Generator	/	/	/	/
High Frequency	/	/	/	/

### Front panel button functions



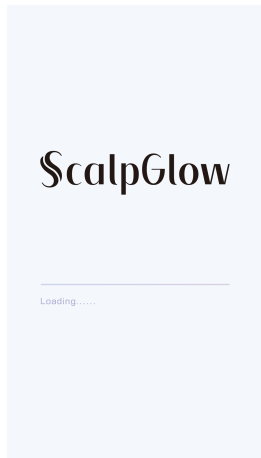
Vacuum Scalp  
Suction Control Knob



ON/OFF

## 2.Control Panel Instructions

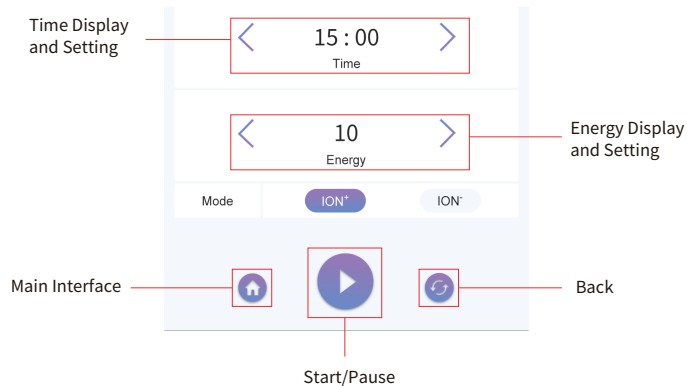
The welcome interface appears upon powering on the device.



Handle selection interface.



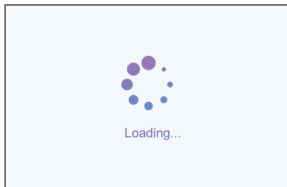
## Common Button Functions for All Handles



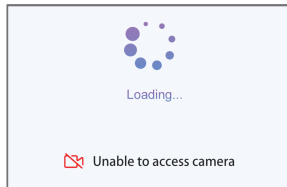
## HD Scalp Analyzer Instructions

### 1.Activation

When the HD Scalp Analyzer is selected on the screen, the camera light will activate, displaying a "Loading" interface.



Wait 3-6 seconds for the camera to be ready. If it takes longer than 10 seconds, a failure screen will appear.



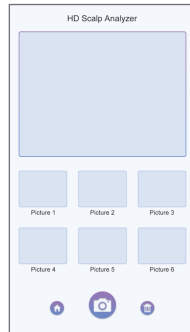
Exiting the Failure Screen: ⚠

- Option 1: Check the camera connection, re-plug it, and wait 3-6 seconds for activation.
- Option 2: Power off the machine and restart.

### 2.HD Scalp Analyzer Main Interface

•The upper part of the screen shows a live preview of the camera feed, while the lower section displays up to six saved photos (Picture 1-6).

•Photos are stored sequentially from Picture 1 to Picture 6. When all six slots are filled, each new photo replaces Picture 6. To delete a photo, tap the delete button (starting from Picture 6 down to Picture 1).



### 3.Detailed View

•To view a photo in detail, select the desired image, which will be enlarged.

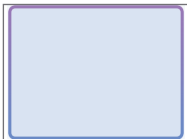
•A brief loading screen appears (1 second) when entering or exiting this view.

•Return to the HD Scalp Analyzer main page by tapping the home button at the bottom or unplugging the handle.



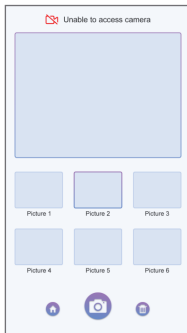
#### 4.Photo Management

- Select a specific photo from slots 1-6 to store a new image in that location or to delete an existing one. The selected photo will have a highlighted border.



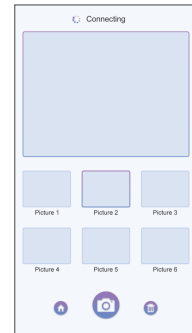
#### 5.Unplugging the Handle

- When the HD Scalp Analyzer handle is unplugged, the system shows a failed connection message.



- Upon re-plugging, a 3-6 second loading time will reinitialize the connection, with the "Connecting" icon disappearing once ready.

- Use the home button to return to the handle selection screen. Note that stored photos will be cleared upon re-entering the HD Scalp Analyzer main page.



## Troubleshooting

### Device fails to turn on

- Ensure the power cord is connected to a working wall socket.
- Check if the fuse is loose or broken; it is located near the power cord socket (refer to the fuse replacement procedure in the Installation section).
- If the above steps don't resolve the issue, please contact your dealer for assistance.

## No energy output from the device

A. Verify that the handle is properly connected to the main unit.

B. Ensure the treatment area is clean, as any grease or oily residue may hinder contact between the treatment head and skin, leading to no energy output.

## Device starts up, but an error message appears on the screen

A. Please unplug the power cord, and wait for 1 minute before plugging in the power cord again and restart the device.

B. If the above steps don't resolve the issue, please contact your dealer for assistance.

## FAQ

1

Q: What are the main functions of ScalpGlow?



A: ScalpGlow primarily promotes blood circulation, enhances scalp health, and supports stronger hair growth.

2

Q: How often should ScalpGlow be used?



A: It is recommended to use ScalpGlow 1-2 times per week. However, you can adjust the frequency based on your needs.

2

Q: 3. Is ScalpGlow suitable for all scalp types?



A: ScalpGlow is suitable for most scalp types, including dry, sensitive, oily, and combination scalps. For individuals with specific scalp conditions, consulting a doctor or professional is advised before use.

## Treatments Introduction

Before starting any treatment, always conduct a scalp analysis using the HD Scalp Analyzer, which takes about 2 minutes. Place the handle on the scalp and take 6 photos in total to analyze the hair type, including dry scalp, oily scalp, mixed scalp, and sensitive scalp.

## 9.1 Dry Scalp

### 9.1.1 Efficacy

- 1.Improves dry scalp and dandruff
- 2.Restores water and oil balance to dry scalp
- 3.Promotes scalp microcirculation and enhances scalp health
- 4.Strengthens the scalp's barrier function and reduces water loss

### 9.1.3 Operation Steps

Preparation: shampoo, essence, pure water, conditioner, hair dryer

#### 1. Vacuum Scalp

- a.Settings:  
Time: 5 minutes
- b.Move the handle across the entire head, starting from the ear.

### 9.1.2 Suitable Candidates

- 1.Individuals with dandruff and dryness
- 2.Itchy scalp
- 3.Dry and dull hair
- 4.Dry hair that affects hair health
- 5.Frequent use of styling products



## 2.Pre-wetting

Wet the hair with warm water.

## 3.Micro Bubble Generator

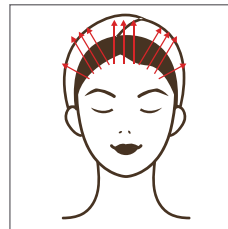
**Pairing Product:** Prepare a 2:1 ratio of shampoo and water in the Micro Bubble Generator bottle, then shake thoroughly.

**Foam Volume Adjustment:** Adjust the foam volume by pressing the trigger.

- a.Apply foam to the hair and cleanse the scalp.
- b.Rinse the hair with warm water and dry.

## 4.High Frequency

- a.Attach the comb tip to the handle and adjust the energy level by rotating the tail part.
- b.Move the handle across the entire head, starting from the ear.





## 5.Scalp Sprayer

**Pairing Product:** Pour essence and purified water into the Scalp Sprayer bottle in a 1:10 ratio, then shake thoroughly.

a.Settings:

Time: 10 minutes

b.Move the handle in circular motions across the entire head, starting from the ear.



## 7.Apply Conditioner

a.Apply conditioner to the scalp.

b.Wait for 5 minutes, then wash and dry the hair.

## 6.Bionic LED Brush

**Preparations:**Essence

a.Settings:

Time: 10 minutes Energy Level: 3 Mode: EMS

b.Apply the essence to the scalp.

c.Move the handle across the entire head, starting from the ear.



## 9.2 Oily Scalp

### 9.2.1 Efficacy

- 1.Regulates oil secretion in the scalp
- 2.Cleanses hair follicles and reduces dandruff
- 3.Improves scalp odor
- 4.Prevents hair thinning
- 5.Enhances hair volume and texture

### 9.2.3 Operation Steps (45 minutes)

Preparations: shampoo, essence, pure water, conditioner, hair dryer

#### 1. Vacuum Scalp

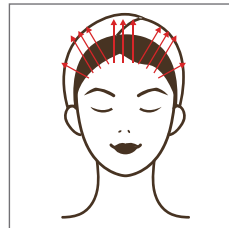
a.Settings:

Time: 5 minutes

b.Move the handle across the entire head, starting from the ear.

### 9.2.2 Suitable Candidates

- 1.Excessive scalp oil
- 2.Dandruff or scalp acne
- 3.Noticeable scalp odor
- 4.Prone to hair loss or thinning
- 5.Oily scalp despite frequent washing



## 2.Pre-wetting

Wet the hair with warm water.

## 3.Micro Bubble Generator

**Pairing Product:** Prepare a 2:1 ratio of shampoo and water in the Micro Bubble Generator bottle, then shake thoroughly.

**Foam Volume Adjustment:** Adjust the foam volume by pressing the trigger.

- Apply foam to the hair and cleanse the scalp.
- Rinse the hair with warm water and dry.

## 4.High Frequency

- Attach the comb tip to the handle and adjust the energy level by rotating the tail part.
- Move the handle across the entire head, starting from the ear.



## 5.Scalp Sprayer

**Pairing Product:** Pour essence and purified water into the Scalp Sprayer bottle in a 1:10 ratio, then shake thoroughly.

- Settings:  
Time: 10 minutes
- Move the handle in circular motions across the entire head, starting from the ear.



## 6.Iontophoresis

**Preparations:**Essence

Encase the iontophoresis rod with a damp cotton pad, ensuring it is held by the recipient.  
The other iontophoresis handle should also be wrapped with wet cotton to conduct electricity.

- Settings:  
Time: 10 minutes Energy Level: 3 Mode: ION-
- Apply the essence to the scalp.
- Move the handle in circular motions across the entire head, starting from the ear.



## 7. Apply Conditioner

- Apply conditioner to the scalp.
- Wait for 5 minutes, then wash and dry the hair.

## 9.3 Mixed Scalp

### 9.3.1 Efficacy

- Balances oil secretion
- Cleanses scalp impurities
- Restores water-oil balance
- Soothes scalp discomfort
- Prevents dandruff and clogged follicles

### 9.3.3 Operation Steps (50 minutes)

Preparations: shampoo, essence, pure water, conditioner, hair dryer

#### 1. Vacuum Scalp

- Settings:  
Time: 5 minutes
- Move the handle across the entire head, starting from the ear.

### 9.3.2 Suitable Candidates

- Scalp with localized oiliness
- Seasonal water-oil imbalance
- Dandruff and itching due to imbalance
- Damaged hair and clogged pores
- Seeking improved scalp condition and hair texture



## 2. Pre-wetting

Wet the hair with warm water.

## 3. Micro Bubble Generator

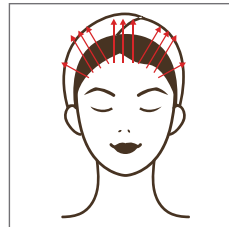
**Pairing Product:** Prepare a 2:1 ratio of shampoo and water in the Micro Bubble Generator bottle, then shake thoroughly.

**Foam Volume Adjustment:** Adjust the foam volume by pressing the trigger.

- Apply foam to the hair and cleanse the scalp.
- Rinse the hair with warm water and dry.

## 4. High Frequency

- Attach the comb tip to the handle and adjust the energy level by rotating the tail part.
- Move the handle across the entire head, starting from the ear.



## 5. Scalp Gun

**Pairing Product:** Pour essence and purified water into the Sprayer Gun Container in a 1:10 ratio, then shake thoroughly.

**Mist Control:** Use the tail knob on the handle to adjust the mist level.

- a. Settings:
- Time: 10 minutes
- b. Move the handle in circular motions across the entire head, starting from the ear.



## 6. Iontophoresis

**Preparations:** Essence

Encase the iontophoresis rod with a damp cotton pad, ensuring it is held by the recipient. The other iontophoresis handle should also be wrapped with wet cotton to conduct electricity.

- a. Settings:
- Time: 10 minutes Energy Level: 3 Mode: ION-
- b. Apply the essence to the scalp.
- c. Move the handle in circular motions across the entire head, starting from the ear.



## 7. Apply Conditioner

- a. Apply conditioner to the scalp.
- b. Wait for 5 minutes, then wash and dry the hair.

## 9.4 Sensitive Scalp

### 9.4.1 Efficacy

1. Soothes and calms, relieving itching and redness
2. Repairs the scalp barrier and strengthens resistance
3. Reduces inflammation, preventing allergies and irritation
4. Hydrates and moisturizes to prevent sensitivity from dryness
5. Improves scalp condition, promoting health and stability

### 9.4.2 Suitable Candidates

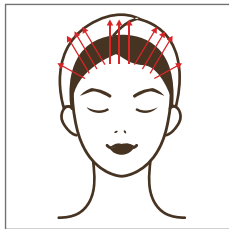
1. Prone to itching and redness
  2. Sensitive or fragile scalp
  3. Damaged scalp barrier
  4. History of scalp allergies
- Sensitivity after dyeing or perming

### 9.4.3 Operation Steps (30 minutes)

Preparations: shampoo, essence, pure water, conditioner, hair dryer

#### 1. Vacuum Scalp

- a.Settings:
- Time: 3 minutes
- b.Move the handle across the entire head, starting from the ear.



#### 2.Pre-wetting

Wet the hair with warm water.

#### 3.Micro Bubble Generator

**Pairing Product:** Prepare a 2:1 ratio of shampoo and water in the Micro Bubble Generator bottle, then shake thoroughly.

**Foam Volume Adjustment:** Adjust the foam volume by pressing the trigger.

- a.Apply foam to the hair and cleanse the scalp.
- b.Rinse the hair with warm water and dry.

### 4.Spray Gun

**Pairing Product:** Pour essence and purified water into the Sprayer Gun Container in a 1:10 ratio, then shake thoroughly.

**Mist Control:** Use the tail knob on the handle to adjust the mist level.

- a.Settings:
- Time: 10 minutes.
- b.Move the handle in circular motions across the entire head, starting from the ear.



### 5.Bionic LED Brush

**Preparations:** Essence

- a.Settings:
- Time: 10 minutes Energy Level: 3 Mode: EL
- b.Apply the essence to the scalp.
- c.Move the handle across the entire head, starting from the ear



## 6. Apply Conditioner

- a. Apply conditioner to the scalp.
- b. Wait for 5 minutes, then wash and dry the hair.

## Treatment schedule

Recommended frequency: 1-2 sessions per week, with a full course consisting of 10 sessions. Treatment frequency should be adjusted based on individual scalp conditions. Visible results typically appear after completing one course, with optimal results achieved after 2-3 courses. To maintain results, a course every 2-3 months is recommended after completing 4-5 courses.

## Post-treatment Care

1. Avoid direct cold wind, as the scalp may be more sensitive.
2. Refrain from using irritating products for 1-2 days after treatment.
3. Minimize sun exposure to prevent ultraviolet damage to the scalp.
4. Avoid frequent touching to prevent bacterial inflammation.

## Warranty and Support

A one-year warranty is provided from the date of purchase.

Product Name: ScalpGlow

Product Model: PS-88K1

Production Date: \_\_\_\_\_

Quality Inspection: \_\_\_\_\_

