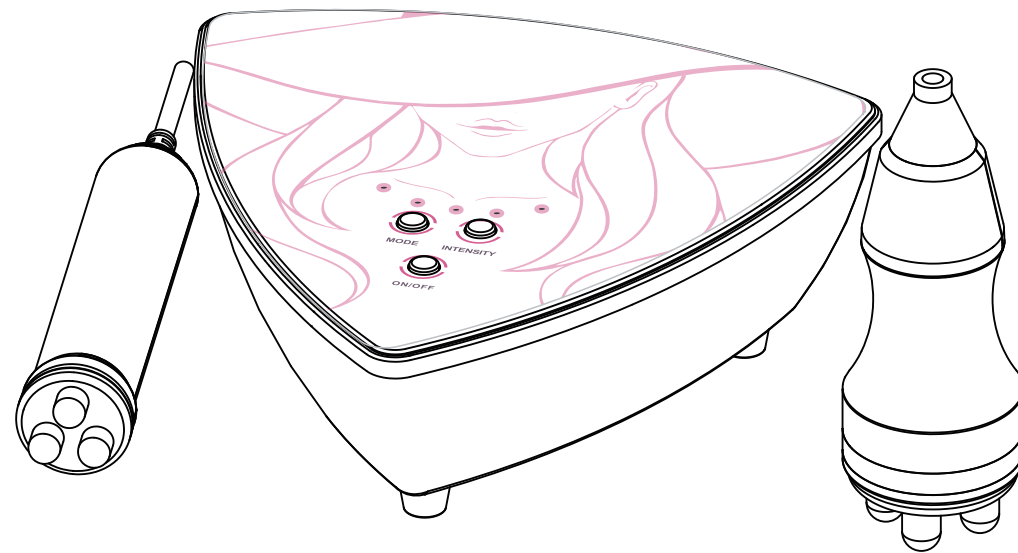


User Manual

MS-22Y2



Content

1.Safety precautions	1
2.Contraindications	1
3.Overview	2
4.Control Panel Introduction.....	2
5.Technical Specification.....	4
6.Use Precautions	4
7.Maintenance & Cleaning.....	5
8.FAQ	6
9.Ask & Answer.....	6
10.Operation Guide.....	7
11.Warranty & Support	8

1.Safety precautions

- 1.Please read this manual carefully before use and familiarize yourself with the operation of this instrument and related technology.
- 2.This instrument is a high-precision electronic device that requires proper storage. Please avoid storing it in humid conditions, direct sunlight, or near flammables and explosives to prevent damage.
- 3.Always use the designated accessory provided or recommended by the manufacturer to ensure performance throughout its service life.
- 4.Do not place the instrument in high-temperature conditions, as this may negatively impact its service life and performance.
- 5.Do not apply the instrument on eyes, thyroid, parathyroid, testicles, pregnant women's abdomen, pacemakers, etc.
- 6.Patients should refrain from using this instrument unless they have obtained permission from their doctor.
- 7.Ensure that the instrument is applied on moist skin and avoid the operation on dry skin.
- 8.Power off the instrument when not in use to ensure its safety.
- 9.To maintain hygiene and extend the device's service life, sterilize it with saline.

2.Contraindications

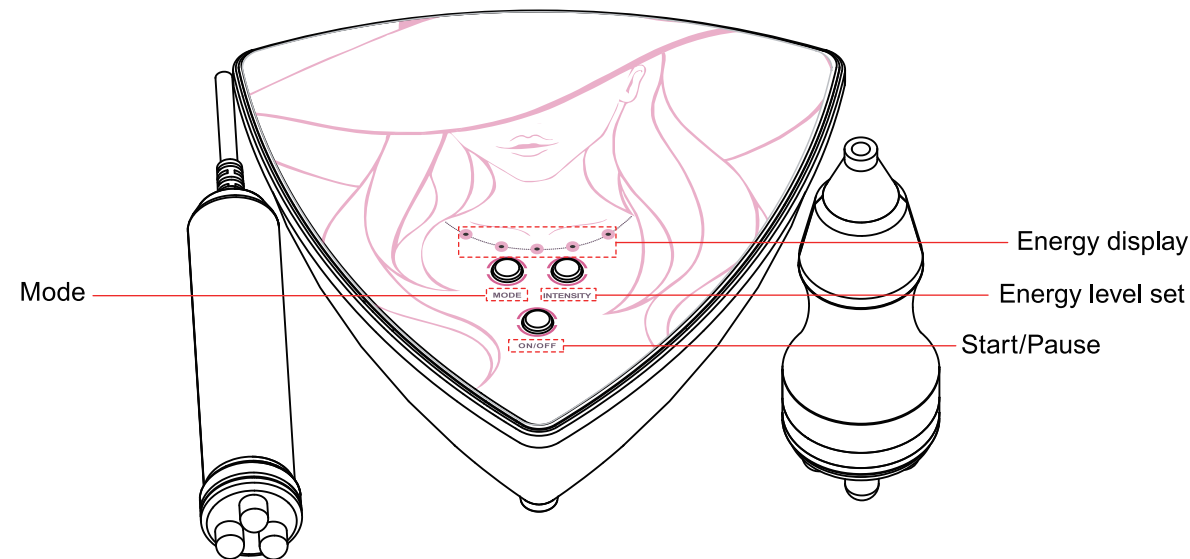
Before using this instrument, it is essential to consult your doctor or seek advice from professionals. Details below:

1. Pregnancy or lactation.
2. Hypertension, heart disease, or with a pacemaker installed.
3. Unhealed wounds or during the recovery phase of surgery.
4. Epilepsy, severe diabetes, and hyperthyroidism.
5. Malignant tumors, hemophilia, and hemorrhage.
6. Skin disease or infectious disease.
7. Cesarean section within the last six months, a miscarriage within the last three months, or a natural birth within the last two months.
8. Had plastic surgery within 3 months or with implants or metal objects in the treatment area.

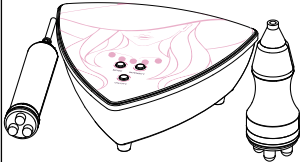


3. Overview

Harnessing the most favored and safest technology, this 2-in-1 beauty instrument offers holistic enhancements, encompassing skin tightening and anti-aging, guaranteeing a radiant metamorphosis for your facial appearance. It provides the perfect solution for people seeking improvements in skin appearance without injections, drugs, or side effects. This external device delivers discernible improvements with each passing day.

4. Control Panel Introduction



5. Technical Specification

	Power supply Input: AC110V-220v 50HZ-60Hz		Net Weight: 1.4 KG
	Power: 35 W	Gross Weight: 1.7 KG	
	Dimensions: 215 * 218 * 80		
	Input Power: 35 W		
	Power: 24 W		
			Power: 35 W

6. Use Precautions

1. Strictly follow the instructions in the manual to use the instrument and train operator.
2. Before using the instrument, use a plug with a grounding pin and ensure the power socket is grounded.
3. Make sure the voltage of the instrument is adapted. If the local power supply voltage is unstable, we recommend adding a power-matched regulated power supply between the mains and the instrument.
4. Remove all the metal objects inside the body to avoid causing accidents or affecting treatment effects.
5. Ensure full skin contact with the treatment head throughout the session to avoid discomfort.

7. Maintenance & Cleaning

1. Disconnect the power cord when not in use and store the instrument in a dry, cool, and well-ventilated place.
2. Clean and sanitize the applicator with a damp cloth or saline, and then dry it thoroughly with a dry towel to ensure it remains dry.
3. After cleaning the instrument, cover it with a dustcloth or plastic wrap. Before use, ensure to sanitize the handle again for hygienic reasons.
4. Disassembling the instrument and attempting to clean the inside is strictly prohibited. This task should only be performed by professionals.

8.FAQ

1.What is RF skin tightening?

A: RF skin tightening treatment generates specific RF waves at targeted skin layers through thermal effects. It stimulates collagen and elastic fiber production and reorganization, resulting in skin lifting and firming.

2.How long does it take to see the results of RF treatment?

A: You might experience skin tightness right after the treatment, as the heat stimulation tightens the collagen tissue, and the RF stimulates the subcutaneous tissue bringing the continuous regeneration of collagen, leading to more noticeable results within one week.

3.Is RF safe for the skin?

A: RF firming and anti-wrinkle treatment is a non-surgical method that stimulates collagen regeneration and metabolism in the deeper layers of the skin without causing any harm. It's normal to experience temporary heat and redness in the treated area, which indicates increased circulation and should subside within a few hours. There's no need to be concerned about this reaction.

9.Ask & Answer

Ask

Cause

Answer

The RF is not functioning.



The handle is not properly connected.



Please confirm if the handle plug is well connected to the main unit.



Oil in the treatment area could result in insufficient contact between the handle and the body.



Apply some gels to the treatment area after cleaning.




The handle is not in proper contact with the skin.

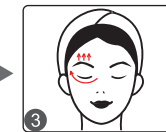
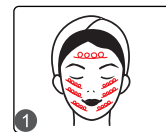


Ensure complete contact between the treatment head and the skin.

10.Operation guide

Face: (Step1:  10mins)

Eye: (Step1:  10mins)



11.Warranty & Support

We offer a comprehensive one-year warranty and a one-month return and replacement policy starting from the date of purchase.

Product Name: Facial Beauty Enhancer
Product Model: MS-22Y2
Production Date: _____
Quality Inspection: _____

