

SW3-U

Shockwave machine

Impact Massage Instrument



**Note: This product is not a medical device
and should not be used for disease treatment**

Model:SW3-U

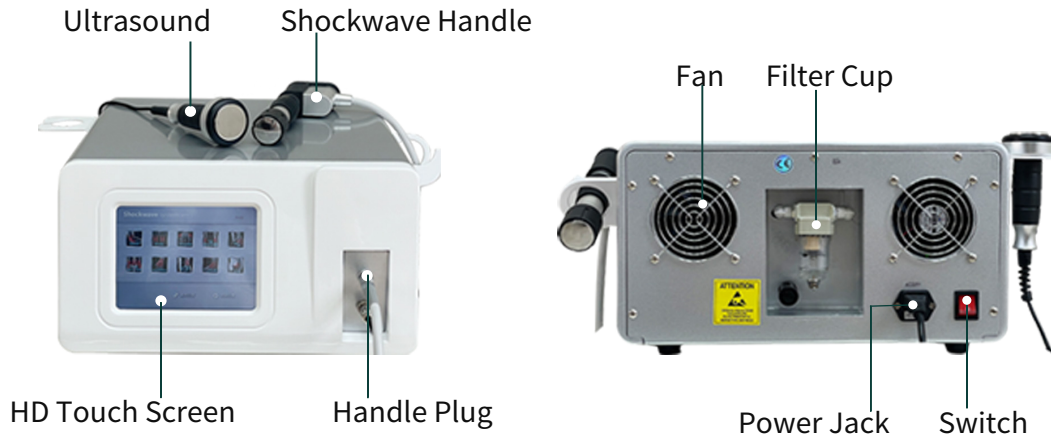


Product parameters

Product number	SW3-U	Product Size	40*40.5*24cm
Shockwave energy	0.5~10bar	Package dimensions	56*47*44cm
Shock wave frequency	1-21Hz	Product gross weight (product net weight)	about23.5Kg (about 16Kg)
Ultrasonic energy	1-10档位	Package dimensions	56*47*44cm
MOdel	P1 P2 P3 P4	Rated voltage	110V/60Hz or 220V/50Hz
screen size	about 8 inches	Warranty time	Host warranty for one year; handle warranty for 3 months

Instrument Structure Display

SW3-U



Introduction of handle and impact head

The pneumatic ballistic shock wave massager is transformed by the pulse sound waves generated by the compressor into ballistics, and the massage effect reaches the fascia layer, which can open the fascia and muscles, thereby alleviating a series of problems caused by muscle strain. Compared with the electromagnetic shock wave, the energy generated is 0.5~10BAR, and the efficiency is fast, the configuration is high, and the effect is good.



Ultrasonic handle

Ultrasonic Therapy is a thermal effect created by the vibration of the gel on the skin and soft tissue that induces high frequency sound waves.

Sound waves create microscopic stimuli in deep tissue molecules, increasing heat and friction, promoting the regeneration of tissue cells

Metabolism to achieve the effect of promoting soft tissue healing.

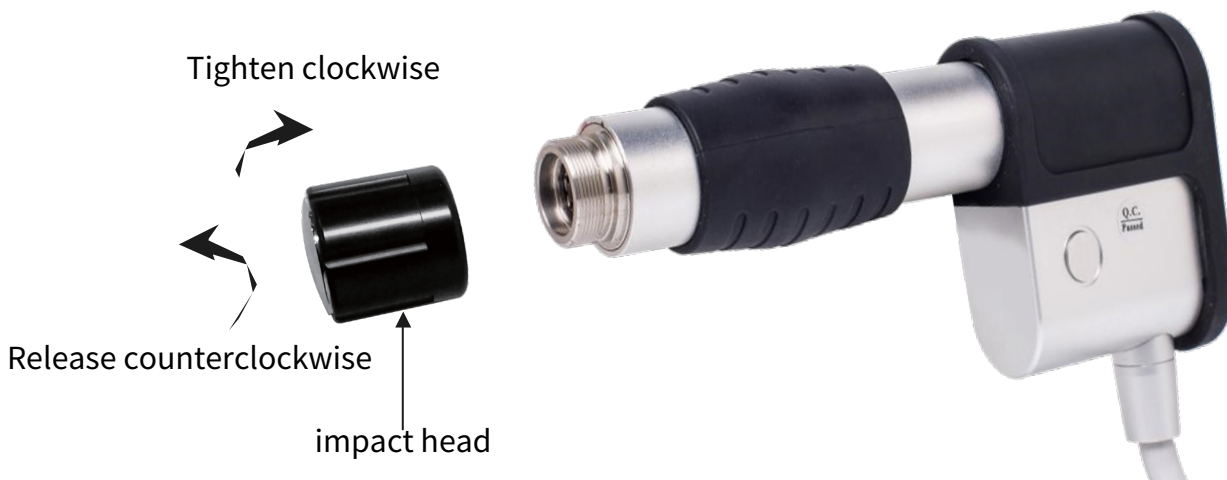


Three Features of Ultrasound

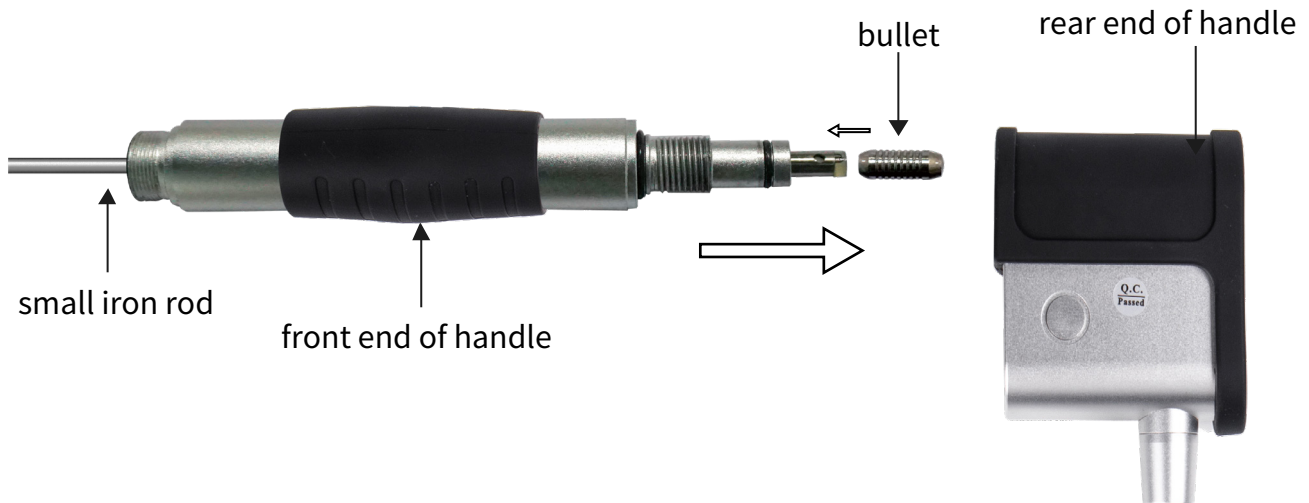
1. Allows thermal energy to penetrate the human body
2. The human body can reach 42°C through pure physical improvement
3. Non-invasive, no broken skin

Replacing the impact head and bullet body

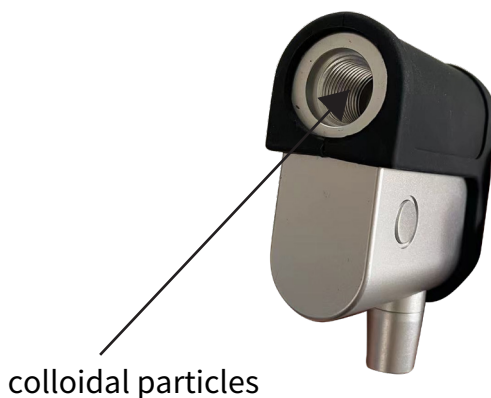
1. Replace the impact head: Hold the impact head with your hand, turn clockwise to tighten, and counterclockwise to loosen.



2. Replacing the bullet : When the bullet body is used normally for 1 million times, first use a small iron bar to push out the original bullet body, Put the new bullet into the steel pipe, and then tighten it to the back end of the handle. If the bullet is not in the steel pipe, it may be sucked into the handle. The rear end (as shown in Figure 1) can be poured out by force. Note: Please use a brush or soft cloth to clean the steel pipe before replacing the bullet .



3. After the handle has been used for a period of time, check whether all the sealing rings and rubber particles (picture 1) are damaged, and replace them in time if they are damaged. Replacing the colloidal particles First remove the damaged colloidal particles with a small tweezer, and then replace the new colloidal particles (Figure 1). The impact head (Fig. 2) was found to be concave if the sink is over 2mm, the impact head must be replaced with a new one.



picture 1



The dent is greater than 2mm and needs to be replaced

Product display from various angles

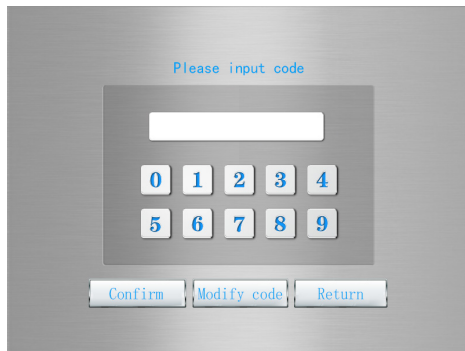


Attachment list

1、Host	One
2、Shockwave Grip	One
3、Ultrasonic handle	One
4、Impact head (9 working heads)	One each
5、Handle bracket	One
6、Power cable	One
7、Manual	One
8、Bullet	Four (including 1 in the handle)
9、Brush	One
10、Small iron rod	One
11、Colloidal particles	Five
12、Matching sealing ring	Ten

Interface setting and operation

1



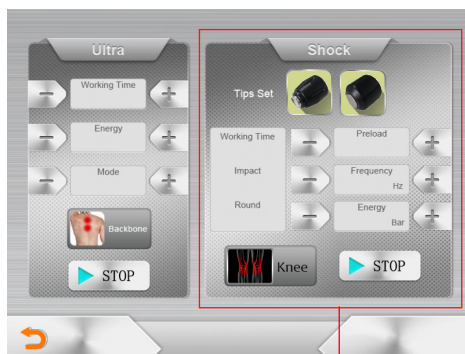
Enter password: 000000
click "Confirm" button

2



10 body parts treatment area

3

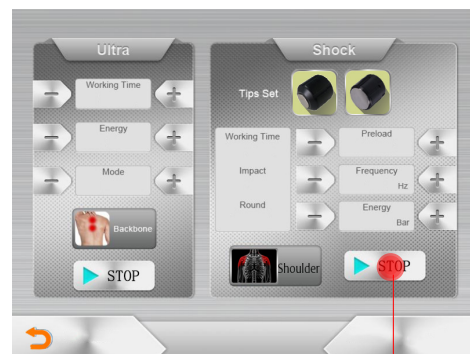


Left

Right

The right is the shock wave
unction interface

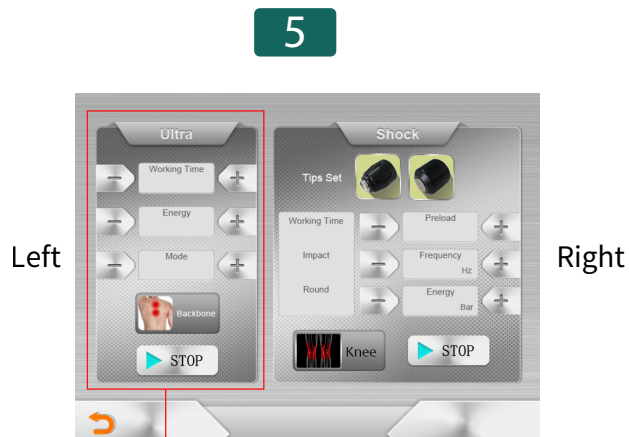
4



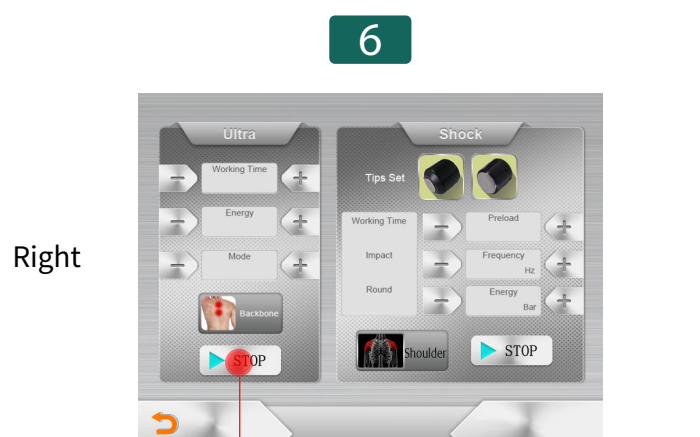
Click the start button to use the
shock wave function(ignore the left side)

Shockwave how to use and operate

- Need to be used in conjunction with gel (the role of gel is to help the introduction of waves and lubricate the skin)
- Select the appropriate impact head according to the prompts of the physiotherapy site (set the working frequency hz and energy range Bar)
- You need to click "start" on the screen interface, and then press the silver button on the handle to start hitting
- During operation, you can click with a fixed click, or you can slowly move the handle to strike around the treatment site
- Remove the handle after daily use to clear bullet debris from the "bullet" pipe for maintenance



The left is the ultrasonic function interface



Click the start button to use the ultrasonic function (ignore the right side)

Ultrasound usage and operation

- The working head needs to move slowly on the treatment site after a few minutes of fixed-point treatment
- The working head should act vertically on the treatment site to achieve the best treatment effect
- All parameter selection should be adjusted according to the actual situation of the patient

Recommended parameters




area	frequency/ energy	impact	Course of treatm ent	total number of passes	Interval s	Probe selecti on
elbow	3HZ/3BAR	2000-2500	3-5	6000-12500	5-7 days	2# 、 3#
wrist	1HZ/1BAR	2000	3-5	6000-10000	5-7 days	1# 、 2#
syndesmosis	3HZ/2BAR	2000-2500	5	6000-12500	Every days	4# 、 5#
knee	3HZ/2BAR	2000	3-5	6000-10000	5-7 days	3# 、 4#
foot/ankle	3HZ/2BAR	1000	3-5	3000-5000	1 day	1# 、 2#
shoulder	6HZ/3BAR	2000-2500	3-5	6000-12500	Every days	4# 、 5#
back spine	8HZ/4BAR	2000-2500	3-5	6000-12500	5-7 days	4# 、 5#
Fat accumulation	10HZ/4BAR	2000-2500	5	6000-12500	5-7 days	4# 、 5#
hip circumference	4HZ/5BAR	2000-2500	5	6000-12500	5-7 days	5#

Note: This recommendation is a suggestion, and it should be operated according to the actual situation.

The shockwave handle cannot be used in the following situations:

1. Pregnant women and children
2. Vascular disease in and around the treatment site
3. Bacterial infection at the treatment site
4. Around malignant or benign tumors
5. Do not hit directly at the spine
6. Do not hit on top of the electronic devices implanted in the body, such as pacemakers, the body has steel plates installed, etc.
7. People with blood diseases, anticoagulant disorders or using anticoagulants
8. Children under the age of 14 (cartilaginous children in the growing stage)
9. Patients with severe hypertension and severe cardiovascular and cerebrovascular diseases, diabetes patients, and polyneuropathy patients
10. Patients with acute inflammation, deep vein thrombosis, goiter, asthma, cancer, etc

The pictures and their meanings are as follows

Warning symbol	Meaning
 Warning	Indicates the possibility of death, serious injury, danger if misused the occurrence of sexual or property damage
 Notice	The danger of high voltage in the high voltage output terminal of the equipment or the occurrence of damage to items
 Danger	Indicates that misuse can cause personal injury

*Item damage refers to damage to houses, household property, livestock and pets.

Maintenance

1. Medical equipment or household appliances close to the instrument may malfunction due to interference.
2. It is forbidden to use this instrument in the following environments:
 - high temperature and humid environment;
 - dusty environments;
 - An environment with a lot of oil smoke or water vapor.
3. If a fault occurs during use, the power supply should be turned off immediately, and it must be disassembled and repaired by professionals, or sent to the dealer, Factory maintenance, not self-repair.
4. Exemption from liability
The manufacturer is not responsible for any of the following situations:
 - (1) The occurrence of force majeure such as fire, earthquake, war, etc.;
 - (2) The user's fault or wrong operation;
 - (3) The damage caused by the use of methods other than this manual;
 - (4) Failure to follow the instructions in this manual.
5. When using the instrument, do not get close to the wall, and keep a space of 30cm around the instrument for heat dissipation.

After-sale warranty card

Respected user:

Thank you for purchasing our company's impact massager. In order to serve you better, after purchasing the product, please read it carefully, fill in and keep this warranty card properly. This warranty card only guarantees that the free warranty service can be enjoyed under the listed time and conditions. For repairs and other questions after the warranty period, please consult the purchaser.

Username :

Product name :

Warranty period :

Purchase date :

Maintenance date	Trouble and Repair Contents	Repair man

Note: Before the product is repaired, please contact the customer service personnel, so that the company can arrange repairs as soon as possible, and the contents of this warranty card will be finally resolved. The right of release and modification belongs to the company.

