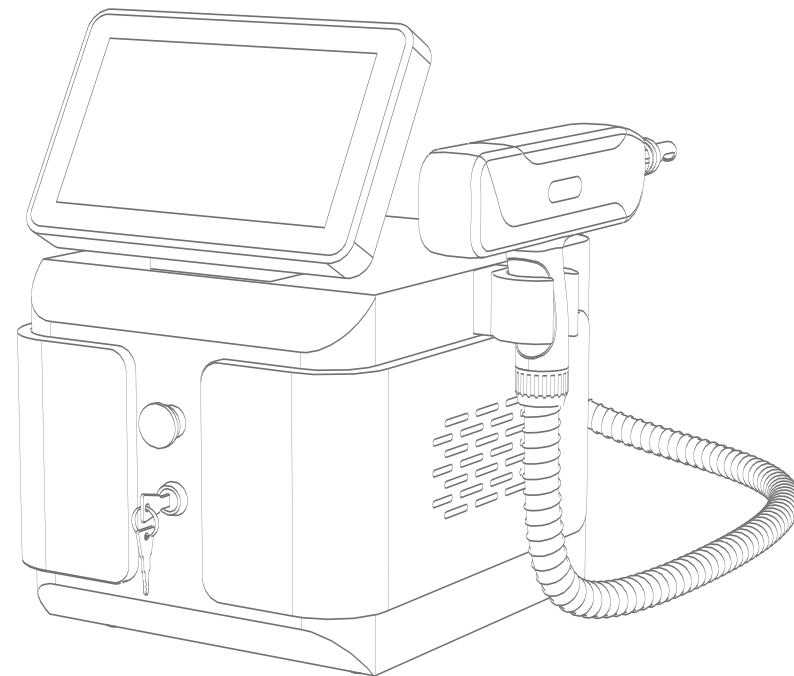


User Manual

HR-11KY

For professionals



Content **Part I**

Safety precautions	1
Contraindications	2
Product Overview	3
Installation and Commissioning	4
Interface Function	5
Technical Specification	7
Component List	7
Operation Guide	8
Use Precautions	13
Maintenance & Cleaning	15
Troubleshooting	15
FAQ	16
Warranty & Support	18

Safety Precautions

- 1.Please read this manual carefully before use and familiarize yourself with the operation of this instrument and related technology.
- 2.This instrument is a high-precision electronic device that requires proper storage. Please avoid storing it in humid conditions, direct sunlight, or near flammables and explosives to prevent damage.
- 3.Always use the designated accessory provided or recommended by the manufacturer to ensure performance throughout its service life.
- 4.Do not place the instrument in high-temperature conditions, as this may negatively impact its service life and performance.
- 5.Do not apply the instrument on the thyroid, parathyroid, testicles, pregnant women's abdomen, pacemakers, etc.
- 6.Patients should refrain from using this instrument unless they have obtained permission from their doctor.
- 7.Power off the instrument when not in use to ensure its safety.

Contraindications

1. Individuals with photosensitivity disorders.
2. Individuals recently consuming photosensitizing foods or drugs, such as celery, isotretinoin, etc.
3. Individuals with pacemakers or defibrillators implanted in their bodies.
4. Individuals with broken skin in the treatment area.
5. Pregnant women or those with diabetes, heart disease, high blood pressure, and epilepsy.
6. Skin cancer patients.
7. Individuals experiencing skin sensitivity due to prolonged exposure to intense sunlight.
8. Individuals with blood disorders or sensitivity to electrical currents.
9. Individuals with severe skin diseases or injected subcutaneous filler in the treatment area.
10. The recipient of a golden thread lift should maintain at least a six-month interval before undergoing this treatment.
11. Individuals who have received collagen and botulinum injections should wait for a three-month interval before undergoing this treatment.
12. Individuals who have undergone skin grafting or exfoliation should approach this treatment with caution.
13. Individuals who have undergone rhinoplasty or laser myopia operation should avoid treatment in the nose and eye area.


Product Overview

The Yag Laser Tattoo Remover serves as an ideal alternative to traditional methods of eyebrow tattoo removal, including medicated, biological, magnetized, frozen, etc. Unlike these methods, which can harm the skin and hair follicles and often fail to completely remove pigmentation, the Yag Tattoo Remover fills the gap in the field of eyebrow tattoo removal.

Utilizing focused, precise, high-energy monochromatic light, the laser achieves strong penetration and targeting. The high-energy emission rapidly penetrates the skin surface to reach dermal pigment clusters. These clusters are selectively absorbed, leading to their rapid expansion and subsequent fragmentation into small particles. These particles are then metabolized by the body's natural cycle and eventually expelled, resulting in the fading and complete elimination of pigmentation.

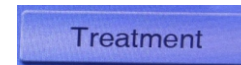
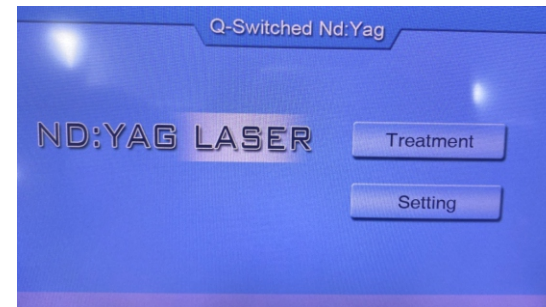
Laser Tattoo Removal offers advantages such as minimal bleeding, reduced pain, a brief discomfort period, high quality, short procedure time, minimal scarring, rare recurrence, and no need for anesthesia. The Yag Tattoo Remover, with its compact and lightweight design, delivers potent treatment with ease of operation.

Installation and Commissioning

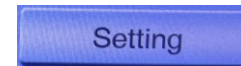
Step 1: Assemble the applicator	<p>1.Connect the applicator to the main unit and snap the buckle on. Place the applicator in the holder.</p> <p>Note: When connecting the applicator to the main unit, ensure that the blue buckles on the left and right sides of the applicator are fully engaged. Failure to do so may result in blocked water circulation and potential damage to the applicator.</p> 	Important
Step 2: Filling water	<p>1.Remove the seal covers from the affusion and overflow on the back of the main unit.</p> <p>2. Connect a funnel to the affusion and fill water (pure water or medical distilled water) until water flows out from the overflow.</p> <p>3.Put the covers back on the affusion and overflow.</p>	Important
Step 3: Commissioning	<p>1.Check for voltage suitability, and water leakage at the connector of the applicator and main unit. Plug the power cable into the power supply.</p> <p>2.Turn the emergency button clockwise (the button will pop up), turn the key clockwise, and press the switch on the front of the instrument to start the instrument.</p>	Important

Interface Function

1.Welcome Interface shows up after connecting the power.

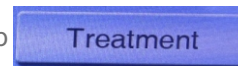


Tap to enter the Treatment interface

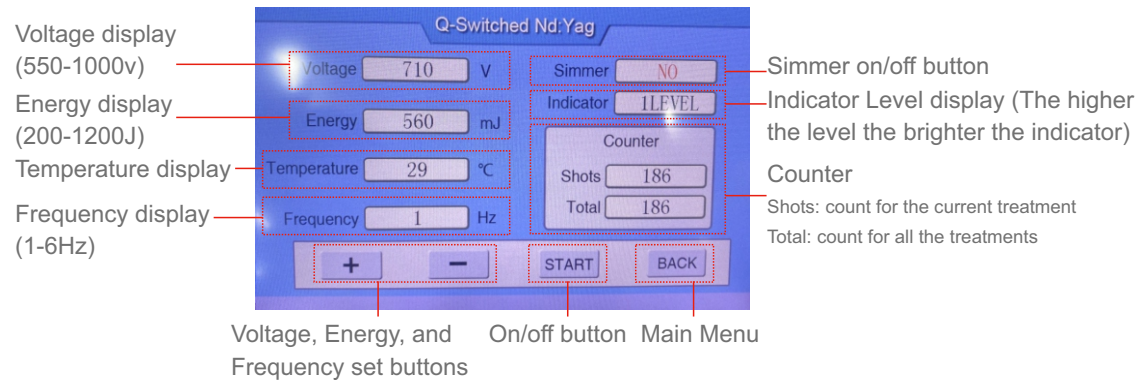


Tap to enter the Setting interface

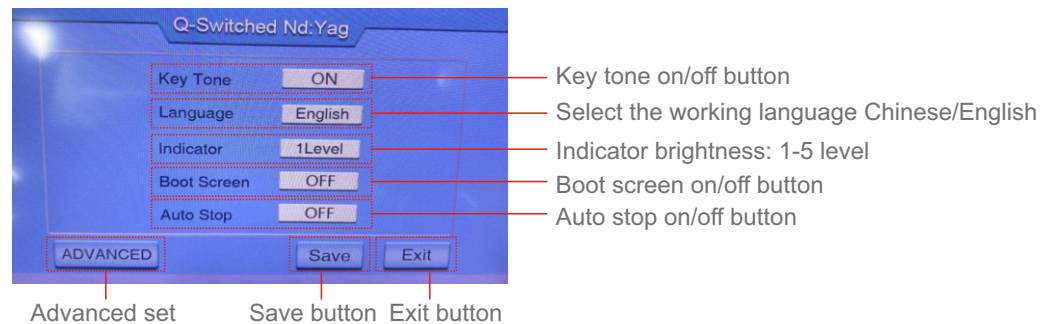
2.Tap




to enter the following interface:



2. Tap **Setting** to enter the following interface:



Technical Specification

	Input voltage: 110V	Net weight: 13.85KG
	Power: 450W	Gross weight: 23.85KG
	Dimensions 44×57×37CM	

Component List

Name	1pc	Note
Main machine	1pc	
Laser applicator	1pc	
Power cord	2pcs	
Key	1pc	For operator
Eye cover	1pc	For recipient
Goggles	1pc	
Funnel	1pc	
Holder for applicator	1pc	
Pedal switch	1pc	
User manual	1pc	
Infrared probe	3pcs	532/1064/1320nm

Operation Guide

Eyebrow tattoo removal

1. Create a profile for the client, gathering information such as tattoo date, history of previous tattoo removal, method used (if any), presence of scars, and allergic constitution. Inform them about the expected reactions in the treated area after the treatment, and provide guidance on post-treatment care.
2. Have the client lie on the bed, shave the eyebrow, cleanse the treatment area, and ensure it remains dry. The operator should allow the machine to run for 2-3 minutes to ensure proper circulation of the water inside, maintaining the instrument's service life.
3. Provide an eye cover to the client and wait for the instrument to be ready.
4. The client should keep their eyes closed during the treatment, and the operator should select the laser intensity based on the shade of the treatment area. Begin around the treatment area to allow the client to acclimate. Keep the probe at a distance of 1-2 fingers from the client's skin and move the applicator over the eyebrow from the head to the tail. If the tattoo reappears within 5-10 minutes after treatment, repeat the process. A check after one and a half months is necessary. The client can opt for another session if there are any residues.

Eyeliner tattoo removal

1. Create a profile for the client, gathering information such as tattoo date, history of previous tattoo removal, method used (if any), presence of scars, and allergic constitution. Inform them about the expected reactions in the treated area after the treatment, and provide guidance on post-treatment care.

2. Have the client lie on the bed, cleanse the treatment area, and ensure it remains dry. The operator should allow the machine to run for 2-3 minutes to ensure proper circulation of the water inside, maintaining the instrument's service life.

3. Start the treatment after the instrument is ready.

4. Adjust the indicator's brightness to the minimum level. Maintain the probe at a distance of 2-3 fingers from the client's skin, ensuring a visible bright spot on the skin. Thoroughly shield the client's eye using 1cm thick medical gauze or an eyelid plate. Commence with the lower eyeliner. Instruct the client to close their eyes while looking upward. The operator gently pushes the client's upper eyelid upward with the index finger and the lower eyelid downward with the middle finger during the treatment. When removing the upper eyeliner, instruct the client to close their eyes while looking downward. The operator presses the cover on the upper eyelid with the middle finger while pushing the upper eyelid upward with the index finger during the treatment. Maintain an interval of 45-60 days between each session, continuing with regular sessions until complete removal is achieved.

Lip tattoo removal

1. Create a profile for the client, gathering information such as tattoo date, history of previous tattoo removal, method used (if any), presence of scars, and allergic constitution. Inform them about the expected reactions in the treated area after the treatment, and provide guidance on post-treatment care.

2. Have the client lie on the bed, cleanse the treatment area, and ensure it remains dry. The operator should allow the machine to run for 2-3 minutes to ensure proper circulation of the water inside, maintaining the instrument's service life.

3. Provide an eye cover to the client and wait for the instrument to be ready.

4. Maintain the probe at a distance of 3-4 fingers from the client's skin. For black, coffee, crimson, and brown lip tattoos, initiate the treatment with the 1064nm infrared probe, then repeat using the 532nm probe. For light red, red, and light coffee tattoos, use only the 532nm probe. Caution: For any lip tattoo, wait for a minimum of 6 months after lip tattoo removal to prevent potential treatment failure. Maintain an interval of 45-60 days between each session, continuing with regular sessions until complete removal is achieved.

Body tattoo removal

1. Create a profile for the client, gathering information such as tattoo date, history of previous tattoo removal, method used (if any), presence of scars, and allergic constitution. Inform them about the expected reactions in the treated area after the treatment, and provide guidance on post-treatment care.

2. Have the client lie on the bed, cleanse the treatment area, and ensure it remains dry. The operator should allow the machine to run for 2-3 minutes to ensure proper circulation of the water inside, maintaining the instrument's service life.

3. Provide an eye cover to the client and wait for the instrument to be ready.

4. Set the Frequency to 3-5Hz. Position the probe 3-4 fingers away from the skin, and use a higher energy intensity if the client can tolerate it, ensuring the appearance of oozing blood on the treated area. For dark blue tattoos, use the 1064nm probe, while using the 532nm probe for red and coffee tattoos. Maintain an interval of 45-90 days between each session, continuing with regular sessions until complete removal is achieved.

Skin Rejuvenation

1. Remove makeup and cleanse the skin.

2. Apply carbon gel to the treatment area and wait for it to dry. Apply the toner to the treatment area and wait for the toner to become dry. The operator should allow the machine to run for 2-3 minutes to ensure proper circulation of the water inside, maintaining the instrument's service life.

3. Provide an eye cover to the client and wait for the instrument to be ready.

4. Set the frequency to 3Hz and initiate with the lowest energy intensity. Position the applicator at a 90° angle on the skin, maintaining a distance of 1-2 fingers away. Press and hold the pedal, then move the applicator slowly and horizontally over the area applied with the carbon gel. Maintain an interval of 1 month between each session.

5. Remove the gel and apply a facial mask.

6. Cleanse the face.

7. Apply toner, essence, lotion/cream, sunscreen.

Caution

1. The 1064nm probe is employed for the removal of blue, black, and cyan tattoos.

2. The 532nm probe is employed for the removal of red, coffee, and brown tattoos.

3. The 1320nm probe is utilized for skin rejuvenation, spot diminishment, and complexion brightening.

4.Position the applicator at a 90° angle on the skin, ensuring the emitted laser is vertical to the skin to prevent loss of laser energy. For the removal of eyebrow tattoo, eyeliner tattoo, and lip tattoo, ensure the bright spot of the indicator forms a straight line. For spot and nevus removal, divide the area into several parts and treat each part over multiple sessions, ensuring the appearance of oozing blood on the treated area.

5.Before the operation, position the probe at the correct place, press the pedal to release the laser, lift the pedal first, and then remove the applicator.

6.After the operation, apply anti-inflammatory ointment and reiterate post-operative precautions to the recipient.

Reaction during operation and post-operative care

Due to the instantaneous high-energy irradiation of the laser, the pigment clusters in the treatment area are rapidly fragmented into tiny particles that can be metabolized by the human body. A portion of the superficial epidermis is immediately expelled, while the deeper tissues are uniformly distributed to the epidermis. This is the reason for the reoccurrence of tattoos shortly after the operation. When treating tattoos with deep color, intense absorption of laser energy by melanin may result in local redness, swelling, blisters, and even the formation of bleeding oozing points. These are normal inflammatory responses of the tissues, and the degree of local inflammation varies from person to person. After the inflammation subsides, touching the tissues may cause itching and a sensation of hardness. In general, any discomfort typically resolves on its own within 3-7 days after the operation. However, for some individuals, it may persist for a longer period of 1-3 months, depending on their physical condition.

After the operation, avoid actions that could lead to infection in the bleeding area, such as penciling the eyebrow, washing, sun exposure, and other activities. Follow the doctor's advice, including dietary recommendations. Avoid spicy and stimulating foods, seafood, beef, mutton, etc., for 3-7 days. No alcohol. For clients experiencing severe bleeding and swelling, it is recommended to take oral antibiotic medication (acetylspiramycin) after surgery. Additionally, use erythromycin ointment externally during the recovery period (72 hours post-surgery) on the affected area to aid in healing. The restorative solution is also helpful.

Determinants of Tattoo Removal

1.Tattoo ink ingredients. Inks are categorized into vegetable, composite, and chemical. Removal difficulty varies from easy to difficult. Composite and chemical inks often contain iron and lead minerals, making them prone to deep skin deposition, leading to removal challenges.

2.Tattoo color shade. Generally, darker colors are more challenging to remove, necessitating more sessions. Lighter colors are easier to remove with fewer sessions. However, for chemical ink tattoos, regardless of color shade, tend to yield less satisfactory treatment outcomes.

3.Physical differences factors such as age, skin condition, and body immunity contribute to variations in the removal process.

Use Precautions

1. Before using the instrument, use a plug with a grounding pin and ensure the power socket is grounded.
2. Ensure that the voltage of the instrument is adapted, if the local power supply voltage is unstable, we recommend that the user add a power-matched voltage-stabilized power supply between the mains and the instrument.
3. Remove all the metal objects from your body to avoid unpredictable situations and affect the treatment.
4. The instrument is not intended for use by patients unless they have the permission of a doctor.
5. This instrument is not intended for use by women in menstruation, pregnancy, or lactation.
6. Ensure the water is filled before starting the machine to prevent applicator burns.
7. Strictly avoid making direct eye contact with the intense light emitted from the front outlet of the applicator.
8. Prohibit the presence of reflective materials like mirrors, jewelry, watches, etc., in the treatment room.
9. Maintain the cleanliness of the light guide system, ensuring that cold gel does not contaminate it.
10. If water leakage is detected from the probe, do not operate it. If already in operation, immediately turn it off.
11. Refrain from using flammable substances like alcohol or acetone for skin preparation before treatment. If needed, opt for soapy water or medical distilled water.
12. If alcohol is used for probe cleaning or disinfection, ensure it is completely dry before operation.
13. Verify circuit and water circulation immediately upon machine startup, and monitor both during the treatment process.

Maintenance & Cleaning

1. Disconnect the power cord when not in use and store the instrument in a dry, cool, and well-ventilated place.
2. Regularly use a clean cotton cloth to gently wipe the lenses of the instrument.
3. Disassembling the instrument and attempting to clean the inside is strictly prohibited. This task should only be performed by professionals.

Troubleshooting

1. Fail to turn on the instrument, and the button light on the back of the main unit is off.
 - A. Make sure the power cable is connected to a valid wall socket.
 - B. Please check if the fuse is loose or burned.
 - C. Check if the emergency button is on.
 - D. Check if the key switch is on.
2. Abnormal hot applicator.
 - A. Insufficient voltage. Check the power supply and electrical circuit.
 - B. Prolonged use of the applicator. Turn off the instrument and wait for 10-15 min.
3. The applicator fails to release the laser.
 - A. The probe or the lens is dirty, wipe it with a clean cotton cloth.
 - B. The laser bar life has expired or is damaged, replace it with a new laser bar.
 - C. Check if the pedal connection is loose.

FAQ

1. Will the treatment leave a scar?

A: No. Laser tattoo removal generally does not cause scarring as it breaks up locally formed pigment particles without harming the skin. However, individual differences exist, and some people may have scar-prone constitutions. In such cases, the pigment absorbed through the traumatized surface during treatment may lead to scarring. After the procedure, recipients should avoid wetting the treated area or touching the traumatized surface with their hands in the early stages to prevent infection. If postoperative redness and swelling are severe, applying ice packs within 24 hours can help calm the skin. It is also advised to avoid spicy and stimulating foods to support wound healing.

2. Will the treatment impact normal eyebrow growth?

A: No, there is no damage to the hair follicles; the eyebrows will continue to grow normally. Laser eyebrow tattoo removal solely targets the color of the tattoo, restoring the eyebrows to their natural color. Typically, eyebrows will regrow within about two months, but the exact timing is influenced by individual conditions.

3. Any pain during the treatment?

A: Only mild pain. Laser eyebrow tattoo removal employs laser photothermal technology to break down pigment material in the eyebrows, allowing it to be expelled from the body through scabs, achieving the desired tattoo removal effect. The laser induces a certain level of skin irritation, resulting in mild pain. However, this pain is generally tolerable for most individuals. The laser operation process is relatively simple, and the duration of the procedure is typically short, resulting in a relatively short-lived discomfort. Following the treatment, local skin sensitivity may occur, accompanied by mild redness and swelling, which can be alleviated with the use of ice packs.

4. How long should the treated area stay away from water?

A: The treated area should not come into contact with water until after a week. Scabs typically form 3-5 days after the surgery and will heal in about 5-7 days, requiring the avoidance of water contact for the first week.

5. When can I apply the makeup?

A: Generally, it is advisable to wait 7-15 days before applying makeup, depending on the skin's recovery progress. After the treatment the skin may experience slight swelling or pain, requiring a recovery period during which makeup is not allowed. Applying makeup too early may cause premature scabbing, leading to noticeable scars and potential hyperpigmentation. For cases of severe skin trauma, increased discharge, or bleeding, it is recommended to wait 15 days before applying makeup to minimize skin irritation. If the skin trauma is less severe, makeup can be applied after 7 days, with regular anti-inflammatory treatment. Throughout the recovery period, it's essential to maintain local hygiene and pay attention to diet.

6. What is the function of the carbon gel in the Skin Rejuvenation treatment?

A: The carbon gel contains nano-sized particles, applied to the facial skin before the treatment, serving as a thermally conductive medium. This allows the laser to uniformly penetrate the treated area, directly reaching the dermis layer for effective treatment.

Warranty & Support

We provide a one-year warranty and a three-month return and replacement policy from the date of purchase.

Product Name: Yag Tattoo Remover

Product Model: HR-11KY

Production Date: _____

Quality Inspection: _____

