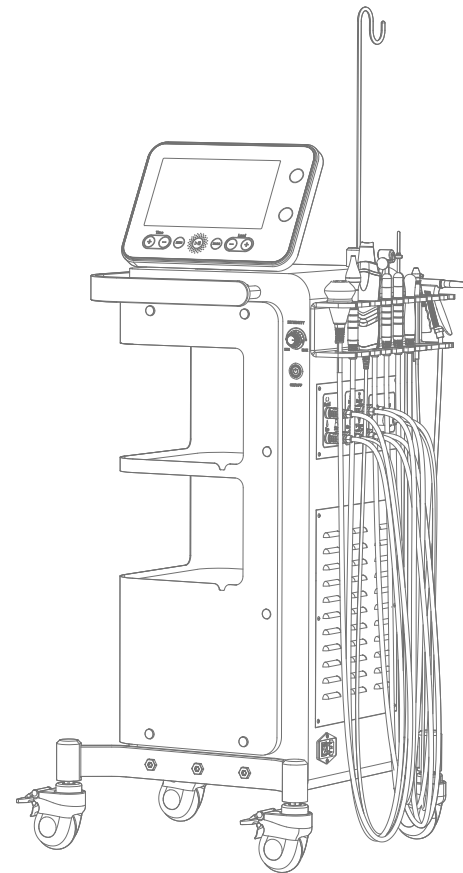


# User Manual



# Preface

Dear User:

Welcome to our latest beauty innovation: the Versatile Beauty Device. The Versatile Beauty Device is a professional facial beauty instrument designed to be operated by a professionally trained operator. Incorrect usage may lead to adverse consequences for the human body. We urge you to read this manual carefully and strictly follow the instructions provided to operate the instrument safely.

We believe in the high quality of our product, which we trust will deliver excellent results for you. Additionally, our dedicated after-sales service is here to address any concerns you may have.

Thank you!

# Contents

|                                 |    |
|---------------------------------|----|
| 1.Introduction                  | 2  |
| 2.Precautions                   | 2  |
| 3.Contraindications             | 3  |
| 4.Product Specifications        | 4  |
| 5.Packing List                  | 5  |
| 6.User Guide                    | 6  |
| How to install                  | 6  |
| Interface Instructions          | 8  |
| 7.Troubleshooting               | 10 |
| 8.FAQ                           | 10 |
| 9.Treatments Introduction       | 12 |
| Facial Deep Cleansing           | 12 |
| (1)Efficacy                     | 12 |
| (2)Indications                  | 12 |
| (3)Recommended Application      | 12 |
| Facial Soothing and Calming     | 15 |
| (1)Effect                       | 15 |
| (2)Indications                  | 15 |
| (3)Recommended Application      | 16 |
| Facial Anti-Wrinkle and Firming | 18 |
| (1)Effect                       | 18 |
| (2)Indications                  | 18 |
| (3)Recommended Application      | 18 |
| Glowing eyes                    | 21 |
| (1)Effect                       | 21 |
| (2)Indications                  | 21 |
| (3)Recommended Application      | 22 |
| 10.Treatment Schedule           | 23 |
| 11.Post-treatment Care          | 23 |

## 1.Introduction

The Versatile Beauty Device is the most popular comprehensive instrument for facial care, offering easy operation and efficient solutions for various facial skin concerns. This device excels in rejuvenating skin, anti-aging treatments, promoting circulation, reducing acne, minimizing pigmentation, diminishing wrinkles, brightening skin tone, delivering nutrients without needles, deep cleansing, exfoliating aging skin, shrinking pores, whitening, and hydrating, as well as tightening and lifting the skin.

The specific function of each hand: The Jet-Tip and SPRAY handles employ powerful air pressure and nutrient solution to efficiently cleanse deep-seated impurities within the epidermal layer while hydrating and revitalizing the skin. The SKIN handle utilizes low-intensity micro-vibrations, oscillating at 20,000 to 30,000 times per second, to exfoliate dead skin and eliminate excess sebum and debris from the pores. The FACIAL and EYE handles utilize cavitation to penetrate the skin barrier, facilitating the absorption of nutrient solution and enhancing its concentration delivered transdermally. Furthermore, ultrasound eliminates lipids from the stratum corneum, resulting in stratum corneum fluidization. This, in synergy with the electro-osmosis of iontophoresis, enhances the penetration of the nutrient solution. The ROLLER, PIN, and Y-TYPE handles utilize a low-intensity electric current to enhance the penetration of charged nutrients (positive and negative) into the skin tissues. This aims to nourish and repair the skin.

## 2.Precautions

- 1.This device is guaranteed by the designated after-sales service unit.
- 2.Use this product at ambient temperatures between 16°C and 35°C, do not place the device in a high-temperature environment, as this may affect the service life of the device and normal use.

- 3.Clean the device with saline after use and store it properly to extend its service life, do not use alcohol or alcohol contained product to wipe the device.
- 4.Always use the designated accessories provided or recommended by the original manufacturer to ensure the performance of the device and sustain its lifetime.
- 5.Do not use the device on the eyes, thyroid, parathyroid, testicles, abdomen of pregnant women and pacemaker.
- 6.Remove all the metal objects from your body to avoid unpredictable situations or affect the treatment before start.
- 7.Please turn off the power of the device when not in use, and make sure to turn off the general power of the device before leaving after daily use to ensure the safety of the device.
- 8.Individuals who have had a cesarean section or surgery within the last six months, a miscarriage within the last three months, or a natural birth within the last two months should refrain from using this device. Women in periods of menstruation, pregnancy, or lactation should refrain from using this device.
- 9.Ensure that both the treatment area and handle remain moist during the operation to enhance the effectiveness of the treatment.
- 10.For treatment involving ROLLER or PIN handles, ensure the metal bar is held by the recipients.

## 3.Contraindications

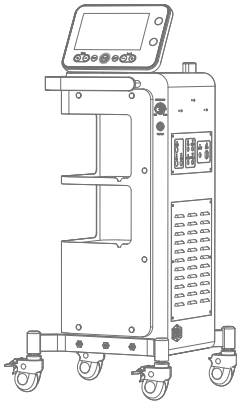
- 1.Individuals with the following conditions should refrain from using this device:
- 2.Pregnant or lactating women;
- 3.Individuals with open wounds or recently stitched wounds in the treatment area;

- 4.Individuals with inflammation or skin diseases such as dermatitis, rash, eczema, herpes, psoriasis, or pyoderma in the treatment area;
- 5.Individuals with chronic or acute thrombophlebitis;
- 6.Individuals with a metal object, artificial limb, or pacemaker installed around the treatment area;
- 7.Those experiencing worsening chronic diseases, infectious diseases, oncological conditions, mental health disorders, etc.
- 8.Advanced age person.

## 4.Product Specifications

Product name: Versatile Beauty Device  
Product model: FC-89K1  
Shell material: Sheet metal  
Handle material: Aluminum Alloy, ABS  
Screen size: 10.1 inches  
Product dimensions: 49cm\*60cm\*137.5cm  
Packing dimensions: 55cm\*55cm\*105cm  
Product weight: 45kg  
Packing weight: 66kg  
Input voltage: 110VAC, 60Hz  
Rated power: 700W

## 5.Packing List



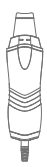
Main Machine \* 1



FACIAL Handle \* 1



EYE Handle \* 1



SKIN Handle \* 1



Y-TYPE Handle \* 1



ROLLER Handle \* 1



PIN Handle \* 1



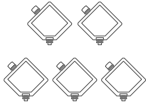
Ground \* 1



JET-TIP Handle \* 1



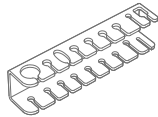
SPRAY Handle \* 1



Solution Bag \* 5



solution bag holder \* 1



Handle Holder \* 1



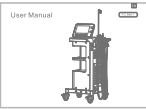
Power cord \* 1



Fuse\*4



Hex Wrench\*2



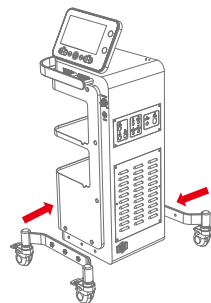
User manual \* 1

Note: make sure the packaging is complete before use, then remove all packaging materials and confirm that all accessories of the appliance are complete.

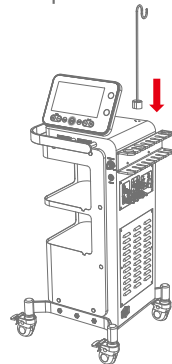
## 6. User Guide

### 1. How to install

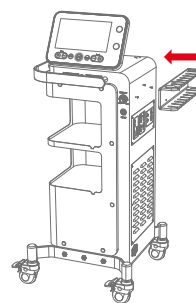
Step 1: Install the wheels.



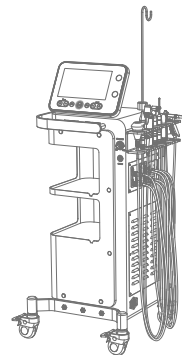
Step 3: Install the solution bag holder.



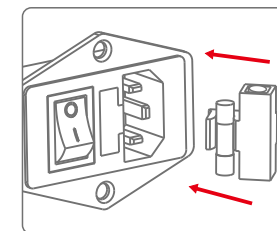
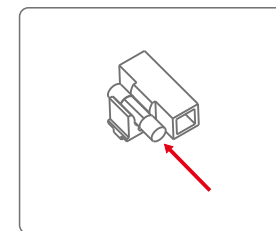
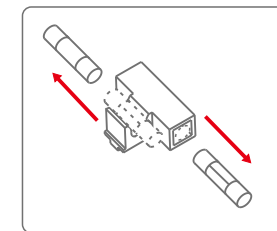
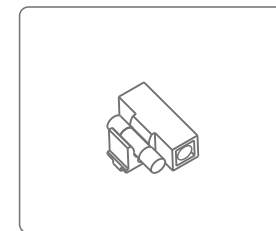
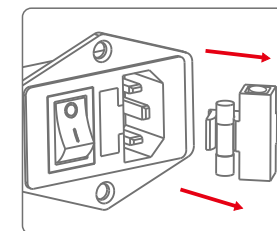
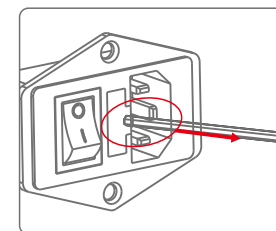
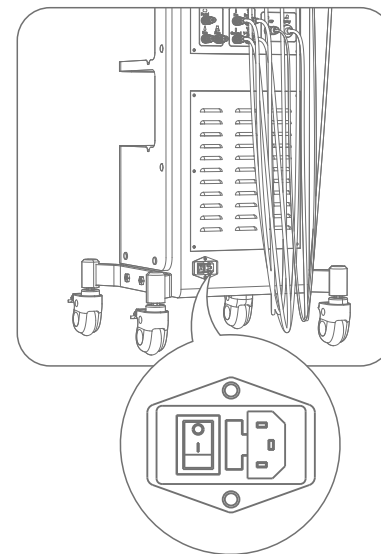
Step 2: Install the handle holder.



Step 4: Place the handles on the holder.



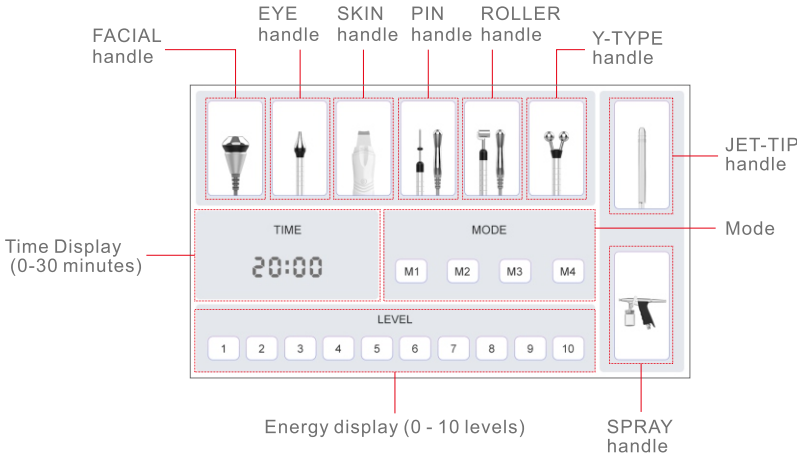
### How to replace the fuse:



2.Interface Instructions



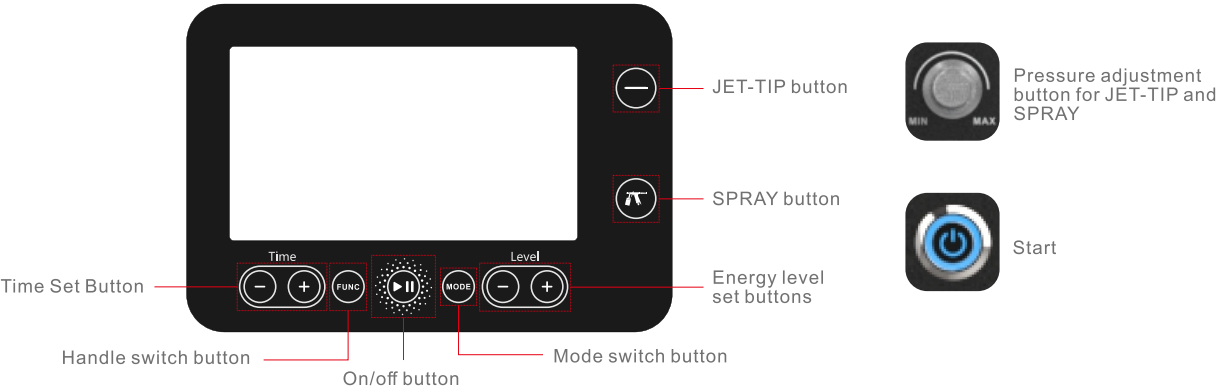
The welcome interface appears upon powering on the device.



Function Instructions

| Mode Setting | FACIAL handle | EYE handle | SKIN handle        | PIN handle   | ROLLER       | Y-TYPE                 |
|--------------|---------------|------------|--------------------|--------------|--------------|------------------------|
| M1           | Wrinkle       | Fine lines | Cleansing          | Positive ion | Positive ion | Lifting and Tightening |
| M2           | Acne          | /          | Exfoliation        | Negative ion | Negative ion | /                      |
| M3           | Redness       | /          | Lifting            | VC Importing | VC Importing | /                      |
| M4           | Sculpting     | /          | Skincare Importing | /            | /            | /                      |
| Time Range   | 0-30mins      | 0-30mins   | 0-30mins           | 0-30mins     | 0-30mins     | 0-30mins               |
| Energy range | 1-5levels     | 1-5levels  | 1-5levels          | 1-10levels   | 1-10levels   | 1-10levels             |

Front panel button functions



## 7.Troubleshooting

### 1.Fail to turn on the device.

A.Check if the power cord is connected to a valid wall socket.

B.Please check if the fuse is loose or broken, the fuse is installed around the socket of the power cord. Refer to the fuse replacement procedure in the “How to Install” for guidance.

C.If the above methods don't work, please contact the dealer for assistance.

### 2.No energy output from the device.

A.Check if the handle is well connected to the main unit.

B.Check whether the treatment area has been cleaned. Grease or oily substances may cause poor contact between the treatment head and the skin, resulting in no energy output.

### 3.The device succeeded in starting up, but an error message appears on the screen.

A.Please unplug the power cord, and wait for 1 minute before plugging in the power cord again and restart the device.

B.If the above methods don't work, please contact the dealer for assistance.

## 8.FAQ

### 1.Why do I need exfoliation?

A: Exfoliation serves multiple purposes in skincare. It promotes skin renewal, improves skin texture, and enhances the skin's absorption of skincare products. The skin's metabolism cycle also varies among individuals of different ages. For example, the cycle is 28 days for teenagers, whereas for adults, it is the sum of their age plus 10. However, aging and dead skin tissues may not shed

effectively, leading to a thickened stratum corneum layer and various skin issues such as dullness, pimples, and acne. Exfoliation helps remove these dead tissues, allowing for healthier, smoother skin.

### 2.Can I apply the SKIN handle on dry skin?

A: No, it's not recommended to apply the SKIN handle on dry skin. It's essential to ensure that the skin remains moist during treatment for optimal outcomes. Keeping the pores open facilitates better penetration of the treatment and promotes effective results. Applying a medium such as facial cleanser or nutrient solution not only improves skin cleansing but also enhances nutrient absorption.

### 3.When can I expect to see results?

A: Immediately after the initial session, you will observe a noticeable improvement in your skin's clarity and transparency. Multi-sessions contribute to more visible effects including deeply hydrated skin, brightened complexion, reduced fine lines, and prevention of the aging process.

### 4.Can ultrasound introduction be used for acne mark removal?

A: Yes, ultrasound introduction can be effective for removing acne marks. It utilizes cavitation to penetrate the skin barrier and deliver nutrients deep into the skin. This process enhances skin absorption, leading to a brighter complexion, smoother skin texture, and fading of post-acne spots. The treatment is safe, non-invasive, and without any side effects, allowing recipients to resume outdoor activities freely.

## 9.Treatments Introduction

### Facial Deep Cleansing

#### (1)Effect

- 1.Deep cleanse skin and improve pore appearance.
- 2.Exfoliation.
- 3.Hydrate and nourish the skin.
- 4.Improve the complexion and increase the skin elasticity.
- 5.Make skin smoother.

#### (2)Indications

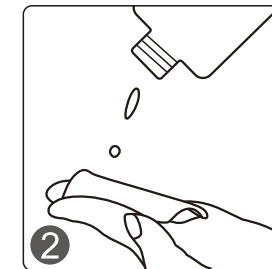
- 1.Those with stratum corneum and excessive sebum secretion.
- 2.Individuals with rough skin, and enlarged pores.
- 3.Those with clogged pores.
- 4.Individuals with a dull complexion.

#### (3)Recommended Application (50 minutes)

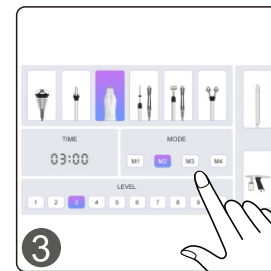
Preparation: wash basin, disposable bag, makeup remover, skin-softening solution, cotton pads, washcloth, facial cleanser, mask, toner, essence, lotion, cream, and SPF.



1. Remove makeup and tone the skin.



2.Skin-softening solution



3.SKIN handle (3 minutes)

Parameters setting:

Recommended Mode: M2

Recommended working time: 3 minutes

Recommended energy level: 3

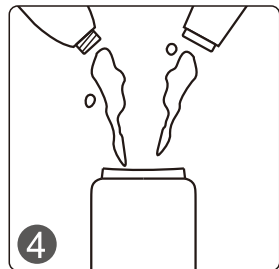


a.Keep the convex surface of the scrubber facing outward, move it upward from the chin, and wipe the treatment area with a disposable cotton pad during operation.



b.Move the scrubber from the right temple towards the left temple, ensuring the entire forehead is covered.





#### 4.SPRAY Handle (10 minutes)

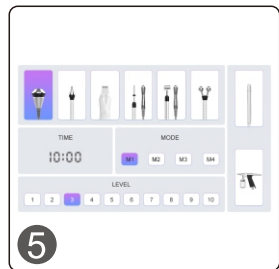
**Solution Preparation:** Prepare the mini-flask by mixing toner and serum in a 10:1 ratio and shaking thoroughly for proper blending.  
**Mist control:** Adjust the mist level using the knob located on the front of the main unit or the knob at the end of the Spray handle.



a.Spray from the chin to the earlobe, from the corner of the mouth to the middle of the ear, and from the nose to the temple.



b.Spray towards the hairline on the forehead.



#### 5.Facial Handle (10 minutes)

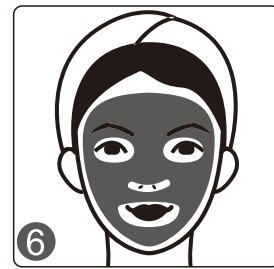
**Required product:** Serum  
**Parameters setting:**  
**Recommended Mode:** M1  
**Recommended working time:** 10 minutes  
**Recommended energy level:** 3



a.Move the handle in circular motions on the 3 areas of the face, move it upward on the chin, from the middle of the face to the side on the cheeks, and upward to the hairline on the forehead.



b.Move the handle on the 3 areas of the face, move it upward on the chin, from the middle of the face to the side on the cheeks, and upward to the hairline on the forehead.



#### 6.Apply a mask (15 minutes)



7.Remove the mask and proceed with your daily skincare routine after cleansing.

## Facial Soothing and Calming

### (1)Effect

- 1.Alleviate facial redness, acne, and allergies.
- 2.Calm and soothe the skin.
- 3.Minimize pores and refine skin texture.
- 4.Boost skin elasticity.
- 5.Strengthen skin resilience and repair sensitivity.

### (2)Indications

- 1.Individuals with sensitive skin, acne, redness, or allergies.
- 2.Those with skin lacking firmness.
- 3.Individuals with dry skin, fine lines, dull complexion, and uneven skin tone.
- 4.Those with enlarged pores, rough skin, and excessive sebum secretion.

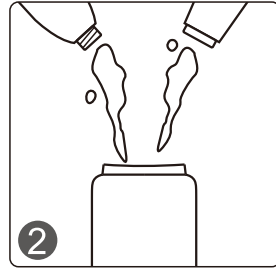
### (3) Recommended Application (45 minutes)

#### Preparation:

wash basin, disposable bag, makeup remover, cotton pads, washcloth, facial cleanser, mask, toner, essence, lotion, cream, and SPF.



1. Remove makeup and tone the skin.



#### 2. SPRAY Handle (10 minutes)

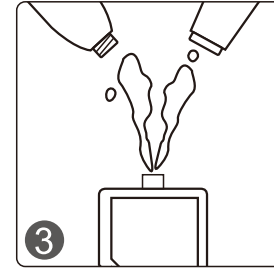
Solution Preparation: Prepare the mini-flask by mixing toner and serum in a 10:1 ratio and shaking thoroughly for proper blending.  
Mist control: Adjust the mist level using the knob located on the front of the main unit or the knob at the end of the Spray handle.



a. Spray from the chin to the earlobe, from the corner of the mouth to the middle of the ear, and from the nose to the temple.



b. Spray towards the hairline on the forehead.

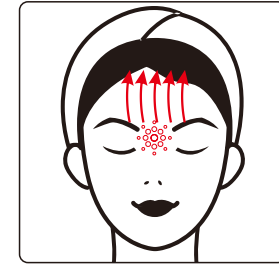


#### 3. JET-TIP Handle (10 minutes)

Solution Preparation: Prepare the solution bag by mixing toner and serum in a 10:1 ratio and shaking thoroughly for proper blending.  
Mist control: Adjust the mist level using the knob located on the front of the main unit or the valve.



a. Spray from the chin to the earlobe, from the corner of the mouth to the middle of the ear, and from the nose to the temple.



b. Spray towards the hairline on the forehead.



4. Apply a mask (15 minutes)



5. Remove the mask and proceed with your daily skincare routine after cleansing.

## Facial Anti-Wrinkle and Firming

### (1)Effect

- 1.Firm facial skin, and introduce nutrients to deep skin layer.
- 2.Enhance skin elasticity, leading to a smoother appearance.
- 3.Moisturize skin, and facilitate skin to absorb nutrients.
- 4.Enhance circulation and metabolism.
- 5.Reduce double chin and tighten the skin.
- 6.Stimulate collagen regeneration and slow down the aging process.

### (2)Indications

- 1.Individuals with dull complexion.
- 2.Those with skin lacking firmness.
- 3.People with fine lines, smile lines, crow's feet.
- 4.Individuals with unclear facial contour.
- 5.People with rough skin and enlarged pores.
- 6.Long-term office workers and individuals exposed to ultraviolet rays.

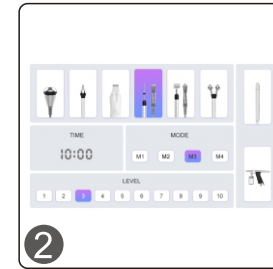
### (3)Recommended Application (50 minutes)

Preparation:

wash basin, disposable bag, makeup remover, cotton pads, washcloth, facial cleanser, mask, toner, essence, lotion, cream, and SPF.



1. Remove makeup and tone the skin.

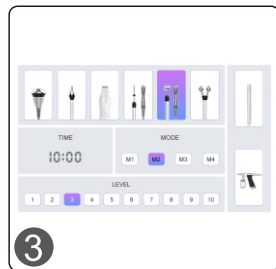


2.PIN Handle (10 minutes)

Required product: VC serum  
Encase the PIN handle and metal bar with damp cotton pads. The PIN handle is for the operator, and the metal bar should be held by the recipient.  
Parameters setting:  
Recommended Mode: M3 Recommended working time: 10 minutes Recommended energy level: 3



a.Glide the handle from the chin to the earlobe, from the corner of the mouth to the middle of the ear, from the nose to the temple, and from the eyebrow to the hairline.



### 3.ROLLER Handle (10 minutes)

Required product: Serum

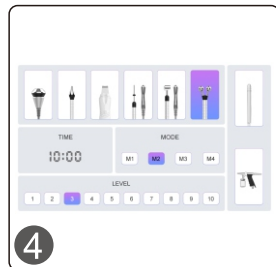
Encase the metal bar with a damp cotton pad, ensuring that the metal bar is held by the recipient.

Parameters setting:

Recommended Mode: M2 Recommended working time: 10 minutes Recommended energy level: 3



a.Glide the handle from the chin to the earlobe, from the corner of the mouth to the middle of the ear, from the nose to the temple, and from the eyebrow to the hairline.



### 4.Y-TYPE Handle (10 minutes)

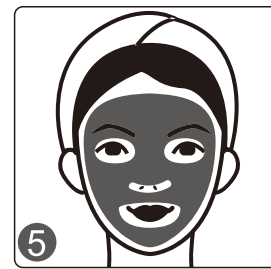
Required product: Serum

Parameters setting:

Recommended working time: 10 minutes Recommended energy level: 3



a.Glide the handle from the chin to the earlobe, from the corner of the mouth to the middle of the ear, from the nose to the temple, and from the eyebrow to the hairline.



### 5.Apply a mask (15 minutes)



6.Remove the mask and proceed with your daily skincare routine after cleansing.

## Glowing eyes

### (1)Efficacy

- 1.Relieves eye fatigue, under-eye shadows, and puffiness.
- 2.Improve the fine lines and crow's feet around the eyes.
- 3.Diminish pigmentation, and enhance circulation.
- 4.Promote metabolism and prevent hyperpigmentation.
- 5.Nourish the eyes and moisturize the skin.
- 6.Firm and soften skin, lift the corners of the eyes.

### (2)Indications

- 1.Those with wrinkles, fine lines, under-eye puffiness, and under-eye shadows.
- 2.Those with dry skin, dry lines, and pseudo-wrinkles.
- 3.Those who often get eye fatigue and dryness.
- 4.Those who spend extended periods in front of computers or phones as part of their daily routine.
- 5.Those with under-eye shadows due to late sleep.
- 6.Those who are often exposed to dry or high-temperature environments.

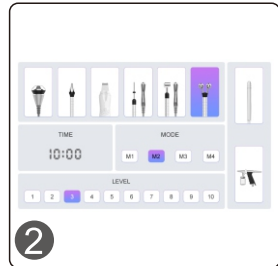
### (3)Recommended Application (30 minutes)

#### Preparation:

wash basin, disposable bag, makeup remover, cotton pads, washcloth, facial cleanser, eye mask, toner, essence, lotion, eye cream, SPF.

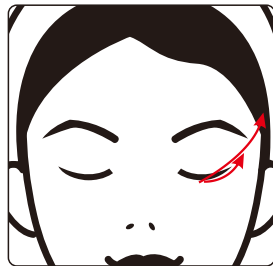


1. Remove makeup and tone the skin.

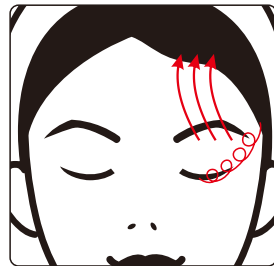


#### 2.EYE handle

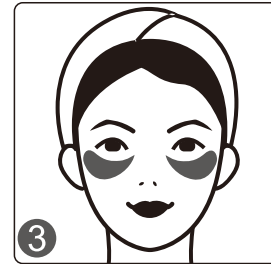
Parameters setting:  
Recommended working time: 10 minutes  
Recommended energy level: 3



a.Lift with the handle from the lower eyelid to the corner of the eye.  
b.Lift with the handle from the lower eyelid to the Temple.



c.Move the handle in small circular motions from the lower eyelid to the Temple.  
d.Lift with the handle from the eyebrow to the hairline.



3.Apply an eye mask (15 minutes)



4.Remove the mask and proceed with your daily skincare routine after cleansing.

## 10.Treatment schedule

It is recommended to undergo one session per week, with a full treatment course comprising 10 sessions. The frequency of treatment should be tailored to individual conditions. Typically, visible results can be observed after completing one course, while optimal results are achieved after 2 to 3 courses. To maintain the results, one course every 2 to 3 months is advised in the late period.

## 11.Post-treatment Care

- 1.Refrain from cleansing your face with hot water; instead, use warm or cold water for best results.
- 2.Stay hydrated and pay attention to sun protection.
- 3.Avoid sauna, hot springs, or strenuous exercise for 3 days after treatment.
- 4.Apply face and eye masks at least 3 times a week.
- 5.Avoid spicy and greasy foods, as well as late nights, cigarettes, and alcohol. Opt for a diet rich in light foods like vegetables and fruits.
- 6.Limit consumption of high-sugar, high-fat, and high-salt foods; maintain a healthy diet.

# Warranty & Support

A one-year warranty is provided from the date of purchase.

Product Name:

Versatile Beauty Device

Product Model:

FC-89K1

Quality Inspection:

PASS