

**JOSTZHXIN**

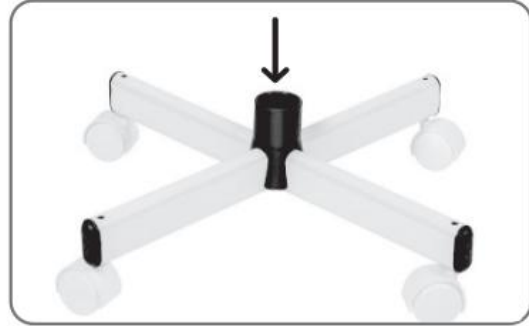
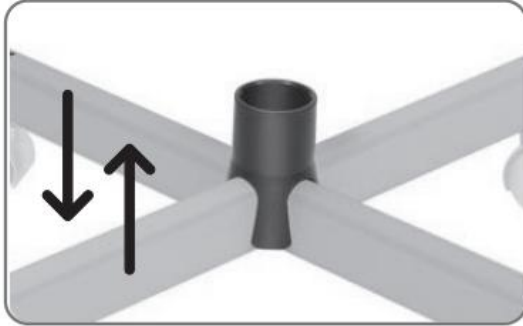
## **Professional 2 in 1 Facial Steamer**

### **INSTRUCTION MANUAL**

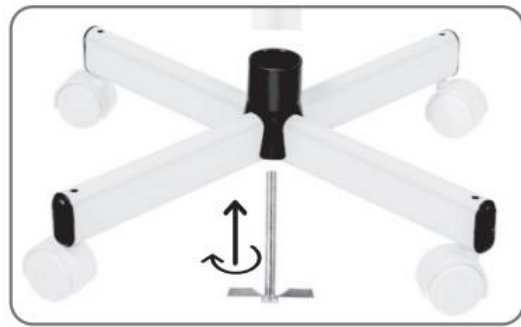


# 1. Installation Steps

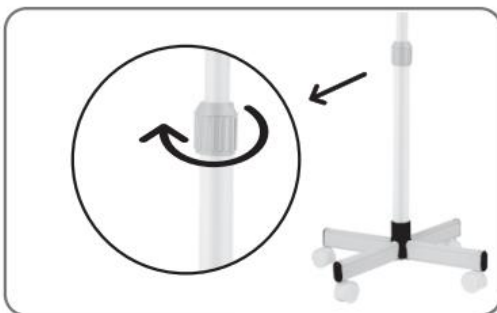
A. Two casters rod are crossed, insert the black card slot.



B. Insert the bottom large rod above the black card slot, use a gasket and long screws at the bottom, and tighten it with small wrench.



C. Insert the second rod and tighten it with a knob, then install 4 wheels (When installing a wheel, it is necessary to align it with the hole on the casters rod and press it firmly until you hear a "crack" sound, which is the correct installation)



D. Insert the magnifying lamp bracket into the upper rod.



**E. Insert the Facial Steamer machine body into the top rod.**



↓ **Fix the main part**

**F. Insert the 5X Magnifying Lamp into the other side of the bracket.**

**Complete installation**



## 2. Precautions of Usage

- a. Do not turn the steamer upside down or tilt it when using the unit. Hot mist shall not be used in water shortage. The tank need to be cleaned frequently. Always unplug the power first before changing water.2. Please note the required time and spray distance shall be determined according to one's skin type.
- b. Please note the required time and spray distance shall be determined according to one's skin type.

Skin type	Distances(cm)	Time(Minutes)
Oily & Weak Circulation	30 (11.81in)	15
Normal	30 (11.81in)	10-20
Sensitive & Dry	35 (13.78in)	5

## 3. Important Instructions

This item has a low water safety alarming system', and if it detects there is no water or not enough water left in the cup, it will give constant alarm to warn you as well as not let the machine work at all.

- **Specific Function:** emits a "beeping" sound when water is lacking

**Solution:** Turn off the power ->remove the water bottle ->fill it with water ->install the water bottle on the machine ->restart the power supply

## 4. Common Problems for BUTTON VERSION & SCREEN VERSION

**Q1:Brand new steamers beeps without heating up when it's first turned on?**

**Reason 1:** If WATER IS TOO PURE (e.g. distilled water) without electrolyte inside, a brand new facial steamer CANNOT detect water at all ,so it will make no water walarm (beep) for safety reason (empty boiling is very dangerous so the item is designed to sound the alarm upon this potential danger)

**Solution:** Use TAP WATER instead of distilled water for a brand new steamer (not necessarily later, but especially important for the FIRST USE). Besides, add A BIT OF SALT in the water cup to make the steamer detect electrolyte

**Reason 2:** WATER LEVEL TOO HIGH / TOO LOW. The steamer will make beeping sound if water

level is beneath Min line or above Max line

**Solution:** Add or reduce water to make water level appropriate

**Q2: Brand new steamer, beeps after boiling?**

**Reason:** If water level is higher than Max line, or boiling bubbles reach the Max line, the steamer will judge water level too high. In order to avoid water spilled out and hurt people, the device will make too much water' alarm -beep

**Solution:** Switch off the steamer. Pour out original water in the cup, and then change into CLEAN TAFWATER (NOT TOO MUCH), and switch on the steamer again to boil the water.

**Q3:Not new steamer, stops working suddenly?**

**Reason 1:**Water level is too high or too low

**Solution:** Please check water level to make sure it is appropriate.

**Reason 2:**Due to the reasons that the water cup is very dirty in itself, or water inside is dirty, many bubbles are produced which have touched the Max line. So the steamer detects too much water and stops working to avoid hot water splashing out and hurting people.

**Solution:** Clean the cup with clean water after each use, and replace the clean water after reuse

**Reason 3:** There are scales or stains on the heating pipe or the surrounding area.

**Solution:** Wipe and clean the heating pipe. if it is still not resolved, you can add about 10ml vinegar to the water cup and heat it for 5 minutes. Then wait for an hour, and when water cools down, rinse the cup with clean water

**Reason 4:** :There are impurities or stains in the cup.

**Solution:** Remove the water cup and clean it with clear water

**\*\* Important Note:** Please Do Not add detergent to any part of the steamer. The detergent will remain after cleaning, which will cause bubbles to be generated by heating and the machine will stop working.\*\*

**Q4: Machine unstable after installing the casters?**

**Reason:** If the machine is unstable after the casters are installed, it must be that the wheels are not properly installed.

**Solution:** The wheels are not rotatably installed. You need to press them into the casters really hard by force. The installation is not successful until a 'click' is heard

**Q5: How to use Chinese herbs and essential oils correctly?**

**Answer:** It is strictly FORBIDDEN to pour Chinese herbs or essential oils directly into the water cup, as this will cause the hot water beads sprayed after heating to hurt people. The correct way to use essential oils is: first drop the essence on a cotton ball, and then place it on the Small round tube below the spray nozzle. Do not pour the essential oil directly into the cup.

**Q6: No spray is released?**

**Answer:**There will be no spray when the water is not boiled. The spray time needs to be about 1 minute after the water boils.

**Q7: Spray mist too weak?**

**Solution:** Turn on the LIGHT' button, and the fog will become much bigger immediately

**Q8: POWER button does not light up?**

**Answer:** Please take a complete video of the use first, and contact our after-sales service team. We will help you to sort out the problem as soon as possible

**NOTE:**

**Please use Purified water or Distilled water for reducing scale to extend the service life of this instrument (Please clean the machine every 30 days).**