

Alice



Alice 17 in 1 Comprehensive Instrument
NV - WA16user manual

Preface

First of all, let us express our heartfelt gratitude to the customers who have purchased our company's instruments. This manual is written for customer service to better use this instrument. We hope that our company's products and services will bring you respectful treatment.

Notice

This product must be used strictly in accordance with the instructions in this manual. Any consequences resulting from misuse or misuse of methods other than those specified in the instruction manual shall be the responsibility of the individual. The company does not assume any responsibility. Our company does not provide any form of guarantee. Including (but not limited to) implied warranties of merchantability and suitability for a specific purpose. Our company shall not be liable for any errors contained in this material, or for incidental or indirect damages caused by the provision of actual performance, and use of this manual. This manual contains proprietary information protected by patent law. All rights reserved. Without the written consent of our company, no part of this manual may be photographed, copied, copied, or translated into any other language. The content contained in the manual can be changed without notification to the user.

Manufacturer's Responsibility

Our company is only responsible for the safety and reliability of the instrument under the following circumstances. Namely, assembly operations, readjustment, improvement, and maintenance are all carried out by personnel recognized by our company. The relevant electrical equipment complies with national standards and the instruments are used in accordance with operating instructions.



Warning:

This is a beauty instrument.

If the beauty institution responsible for using this instrument cannot achieve a satisfactory operating plan, it will cause abnormal instrument failure and may endanger personal health. Currently, our company will provide a paid circuit diagram and a list of calibration methods and other information to assist users in repairing the instrument parts classified by our company as repairable by appropriate and qualified technicians upon request.

Guarantee

Manufacturing process and raw materials: Our company guarantees that the instruments (except for accessories) will have no production process or raw material failures within one year from the date of shipment under frequent use and maintenance. Any inspection conducted by our company is not perfect.









In this manual

This user manual contains all general information about this instrument. This is the starting point for new users to start using this instrument, as it provides a general introduction to the system, explains how it works, and introduces the installation and various operating methods of this instrument. You can find the required information through the directory.

This manual is for personnel who are familiar with the beauty knowledge related to this instrument and have experience in using beauty operation equipment.

Please use it safely

The following are the symbols used in the instrument and manual. In order to use the instrument correctly, prevent harm to operators and patients, protect the instrument from damage, and avoid property damage, please pay attention to the types and meanings of the following symbols.

 warnings	Indicates that failure to use in accordance with norms can result in significant injury to personnel		The notation indicates mandatory items
 distress	Indicates that failure to use in accordance with norms may result in significant injury to persons		A symbol indicates a prohibited item
 take note of	Indicates that non-compliant use may result in personnel injury or instrument failure		Marks indicate items for attention
 take note of	Please consult the manual		Indicates that the type of protection to which the equipment belongs is Type B
note	Reminders to emphasize important information		

1. Precautions

1.1 Precautions for Use

Warning:

- 1) Please do not use parallel sockets to avoid fire accidents;
- 2) When replacing a fuse, be sure to turn off the power switch to avoid fire and electric shock to personnel;
- 3) Must use 220V \pm 22 V, 50HZ \pm 1 HZ power supply and effectively grounded sockets;
- 4) There is a risk of fire or electric shock when using damaged or processed power cords;
- 5) Do not excessively bend or twist the power cord to avoid fire or electric shock accidents;
- 6) When the instrument is loose, dropped or damaged, please contact the company in a timely manner;
- 7) Do not use this instrument in unstable environments such as tilting, vibration, and impact;
- 8) There should be no water or debris entering the interior of the instrument. In case of foreign objects entering, please contact our company in a timely manner;
- 9) When moving the instrument, the power plug must be unplugged first;
- 10) When moving the instrument, vibration should be avoided as much as possible;
- 11) The instrument should be placed in a stable place, with at least 5cm of space left around to ensure air circulation and facilitate heat dissipation of the instrument;
- 12) The instrument should not be covered with anything to prevent blockage of the ventilation opening;
- 13) Avoid using this instrument in the following environments: places exposed to sunlight; High humidity environment; Near water environment; Vibration and inclined places; Strong magnetic field environment etc; Places where electromagnetic waves and impulse voltages occur; Storage facilities for chemical drugs and places with corrosive gases;
- 14) This instrument shall not be placed or used near radios, televisions, copiers, fax machines, etc;
- 15) Do not use it in conjunction with other instruments (such as microwaves) to avoid interference between instruments and cause misoperation.

1.2 Precautions before use

Warning:

- 1) Be sure to read the user manual carefully before starting up. The operator must be familiar with the user manual and operating methods, and the instrument must be managed by a dedicated person;
- 2) Please ask professional personnel to guide the setting of operating parameters;

Attention:

- 3) Confirm whether the instrument is in normal operation before use;
- 4) To confirm whether the grounding wire is connected correctly;
- 5) To confirm whether all wires are correctly connected and safe;
- 6) When using instruments together, it is important to use them correctly, otherwise there may be danger and extreme caution must be taken.

1.3 Precautions during use

warning

- 1) When abnormal situations occur during the operation of the instrument or patient, the operator should immediately remove the operating handle from the patient, press the stop switch, and stop the use of the instrument;

Attention:

- 2) During the operation of the instrument, it is necessary to continuously observe the condition of the beauty customer and the instrument, and pay attention to any abnormal situations at any time;
- 3) This instrument should be used correctly by skilled operators, and personnel other than operators are not allowed to use this instrument.

1.4 Precautions after use:

Attention:

- 1) After the operation is completed, place the control handle back on the control handle rack.
- 2) After using the operating handle, the probe should be cleaned properly for future use.

1.5 Precautions for faults, storage, and inspection Warning:



Warning:

- 1) Please do not use the instrument in case of abnormal situations. In case of smoke and burnt smell that cannot be operated, there is a risk of fire and electric shock if continued use. Please quickly press the stop button, turn off the power, unplug the power plug, and immediately contact our company or dealer;
- 2) Personnel other than technical personnel are absolutely not allowed to repair or modify instruments. This instrument must not be opened internally; Δ Attention:



Attention:

- 3) Instruments and components must be inspected regularly;
- 4) Do not use cleaning tools that may damage the protective coating of the instrument, such as brushes, brooms, etc;
- 5) When the instrument is not used for more than 2 weeks, it must be carefully checked before reuse.

1.6 Warning and informative instructions Warning:



Warning:

When connecting high-frequency equipment and this instrument to the same patient at the same time, the electrode position of this instrument may cause burns to the patient's skin tissue and may also cause damage to the instrument. When using this instrument near shortwave or microwave equipment (1m), the output of the instrument may be unstable due to microwave interference.

Using electrodes close to the chest increases the risk of heart fibrillation.

2. Contraindications

- 1、Individuals with sensitive skin and severe acne
- 2、Rhythmic devices, implantable defibrillators, or other electromagnetic implantable medical devices
- 3、Patients with severe diabetes, hypertension and hyperlipidemia
- 4、Individuals with skin infectious diseases

3. Instrument Overview

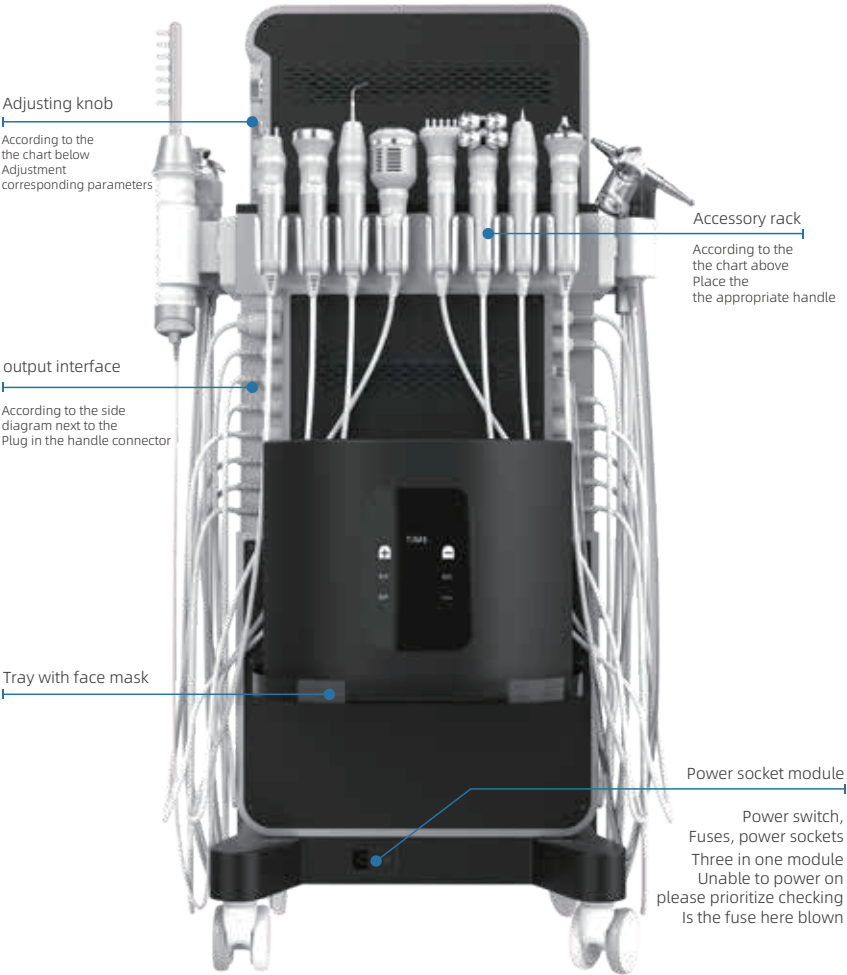
3.1 Front Explanation



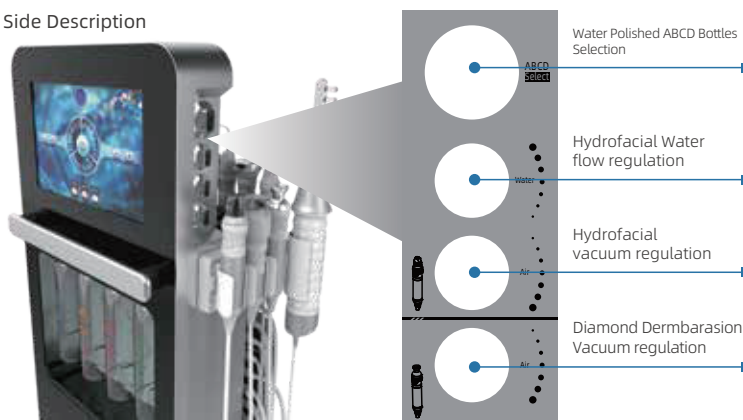
Annotations

The instrument images in this manual are for reference only,
and colors may vary from batch to batch,
The design will be optimized based on the actual product

3.2 Black explanation



3.3 Side Description



4. Instrument installation instructions

4.1 Unpacking and Inspection

- 4.1.1 Carefully remove the instrument and accessories from the packaging box, and store the packaging materials for future transportation or storage. Count the attachments.
- 4.1.2 Check for any mechanical damage.



Attention:

If there are any issues, please contact our sales department or agent immediately.

4.2 Preservation Environment

The instrument should be placed in a clean and ventilated room with a temperature of 5 °C~40 °C and a humidity not exceeding 80%, avoiding direct sunlight. And ensure that the ventilation openings are not blocked, ensuring that there is at least 5cm of clearance around the instrument. Remember not to place items on the instrument, even temporary ones are not allowed.

4.3 Installation accessories

- 4.3.1 Install the corresponding accessory rack on the host according to the text and image information prompts below the output interfaces on both sides of the instrument.
- 4.3.2 According to the text and image information prompts next to the output interfaces on both sides of the instrument, insert the accessories into the corresponding interfaces. Then place the accessories neatly on the accessory rack.

5. Handle operation methods and steps

Fixed functional area

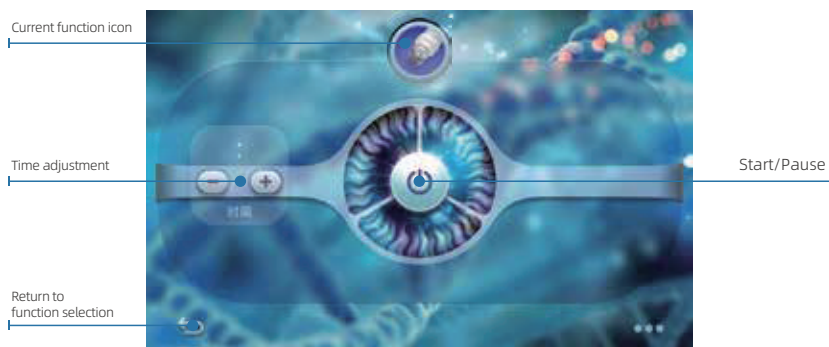


Functions selection area



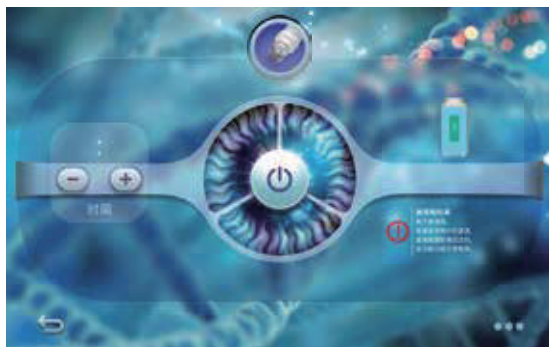
If additional optional functions are required after purchasing the instrument, After receiving the function handle, follow the operation method provided by customer service to automatically add corresponding functions.

5.1 The use of hydrofacial function



5.1.1 Select the water mill cleaning icon in the function selection area, and transfer the essence solution into the original solution bottle;

5.1.2 Select the icon A, B, C, or D of the original liquid bottle on the upper right side of the host knob, adjust the negative pressure intensity and water flow size, click the start button to operate;



When the prompt on the right indicates that the waste liquid bottle is also full, this function will not be available and needs to be operated according to the prompt before it can be used normally

5.2 The use of the V-face function



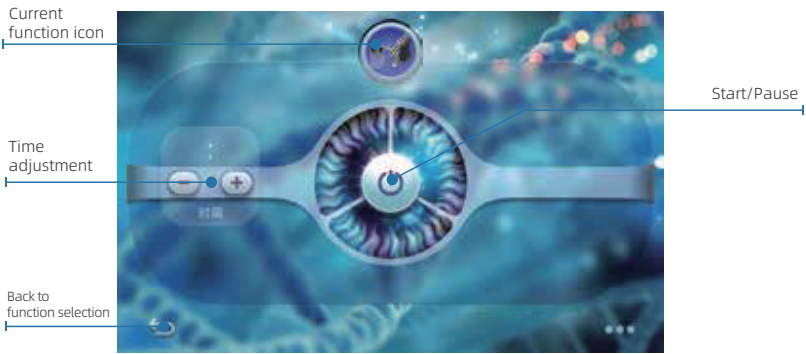
- 5.2.1 Select the V-face icon in the function selection area;
- 5.2.2 Adjust time and work intensity, click the start button, and operate on the face;

5.3 The Use of Five Pole Color Light Microelectric Function



- 5.3.1 Select the five pole color light micro electric icon in the function selection area;
- 5.3.2 Adjust time and work intensity, click the start button, and operate on the face;

5.4 The use of water oxygen spray function



- 5.4.1 Select the water oxygen gun icon in the function selection area;
- 5.4.2 Fill the original solution bottle with the original solution, click the start button, and proceed with the operation;

5.5 The use of flat head vibration atomization function



- 5.5.1 Select the flat head vibration atomization icon in the function selection area;
- 5.5.2 Adjust the energy intensity and mode, click the start button to operate;

5.6 The use of bipolar temperature wave function



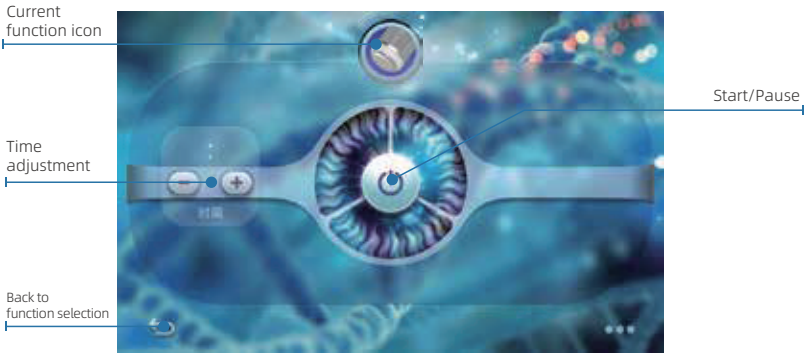
- 5.6.1 Select the bipolar temperature wave icon in the function selection area;
- 5.6.2 Adjust the time and work intensity, click the start button, and operate on the face or eyes;

5.7 The use of the skin scrubber function



- 5.7.1 Select the vibrating shovel function icon in the function selection area;
- 5.7.2 Adjust energy intensity and mode, click the start button, and proceed with the operation;

5.8 The use of cold hammer function



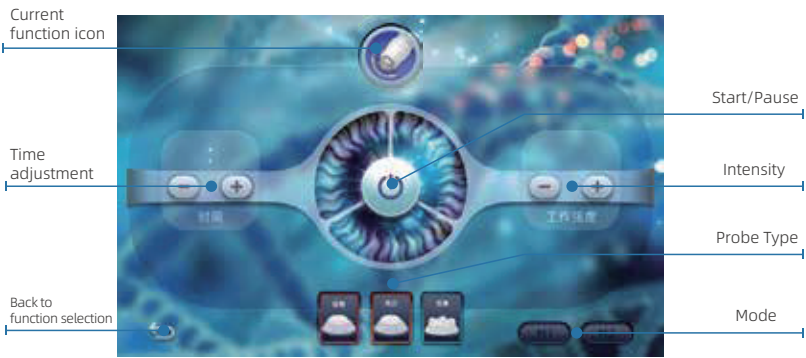
- 5.8.1 Select the ice hammer icon in the function selection area;
- 5.8.2 Click the start button to proceed with the operation;

5.9 The use of the quadrupole roller function (optional)



- 5.9.1 Select the quadrupole scroll wheel icon in the function selection area;
- 5.9.2 Adjust time and work intensity, click the start button, and proceed with the operation;

5.10 The use of oxygen bubble function (optional)



- 5.10.1 Select the oxygen bubble icon in the function selection area;
5.10.2 Adjust the time, select the probe to be used and the working intensity, click the start button and operate on the face;

5.11 Use of spot removal Function (Optional)



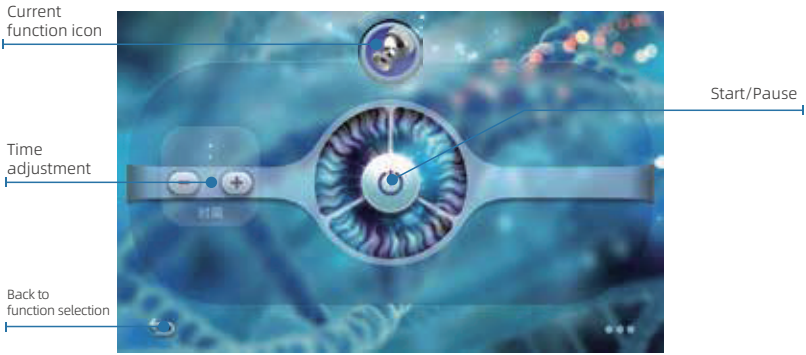
- 5.11.1 Select the Meiban pen icon in the function selection area;
5.11.2 Adjust time and work intensity, click the start button, and proceed with the operation;

5.12 The use of ozone ion function (optional)



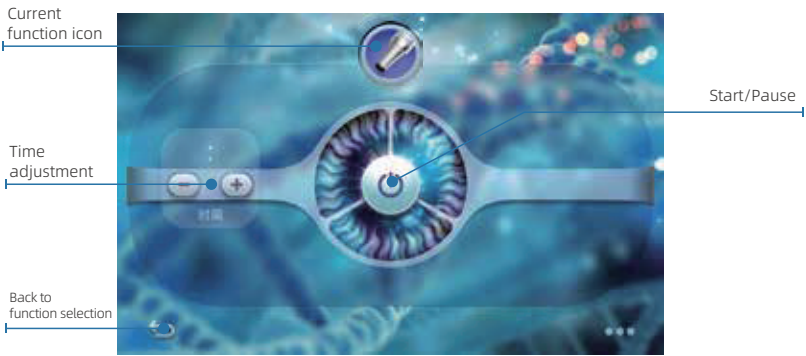
- 5.12.1 Select the ozone ion icon in the function selection area;
- 5.12.2 Adjust time and work intensity, click the start button, and proceed with the operation;

5.13 The use of diamond dermabrasion (optional)



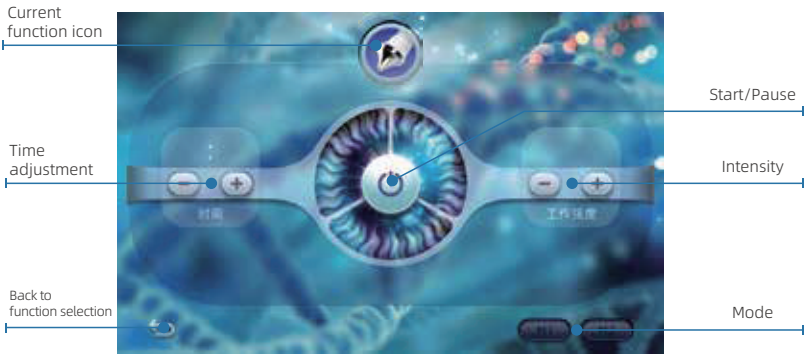
- 5.13.1 Select the brick and stone micro carved icon in the function selection area;
- 5.13.2 Click the start button to proceed with the operation;

5.14 The use of electric microcrystalline function (optional)



- 5.14.1 Select the electric microcrystalline icon in the function selection area;
- 5.14.2 Click the start button, adjust the options on the controller, and then proceed with the operation;

5.15 The use of pointed ultrasonic function (optional)



- 5.15.1 Select the pointed vibration atomization icon in the function selection area;
- 5.15.2 Adjust time and work intensity, click the start button, and proceed with the operation;

5.16 Use of Colorful Mask Function (Optional)



5.16.1 Select the colored light mask icon in the function selection area;

5.16.2 Click the start button, adjust the options on the mask, and then proceed with the operation;

5.17 The use of high-frequency function (optional)

5.17.1 Insert the high-frequency handle directly into the corresponding interface of the host;

5.17.2 Install the required operating head in the front section and operate it after adjusting the strength at the back end of the handle;

6. Precautions

Attention:

- 6.1 Do not use irritating skincare or cosmetics within 24 hours after using the instrument and pay attention to sun protection
- 6.2 Apply pure moisturizing facial mask for one week
- 6.3 For those with thin skin stratum corneum or severe redness and redness in the cheekbones the use of a water polishing pen is prohibited
- 6.4 For those with thin skin stratum corneum or severe redness and blood streaks on the cheekbones, the cheekbones should not be worn for too long during RF video operation
- 6.5 Patients with severe allergies and severe acne cannot operate

Warning:

If the patient feels uncomfortable, the operation should be stopped immediately to ensure user safety.

7. Maintenance and repair

7.1 Maintenance

7.1.1 Daily inspection

Management personnel must inspect instruments and components.

- a) Is there a reliable connection between the power socket and the ground? If not, please replace the power socket.
- b) Whether the power cord is deformed, broken, or disconnected: visually inspect whether the cord has deteriorated or deformed. In some cases, it may cause a fire due to leakage. Please replace the power cord with a new one immediately.
- c) Check if there are any abnormalities or broken wires in the control handle: visually inspect whether the output line has deteriorated or deformed. If so, replace it immediately.
- d) Please check if the prompts before using the instrument are correct. If not, please stop using it.

7.1.2 Cleaning

When cleaning the instrument, dust must be wiped with a dry and soft cloth, and dirt should be wiped with a soft and damp cloth. Before cleaning this instrument, the power switch must be turned off and the power cord disconnected.

7.1.3 Replacement of fuses

- a) Specification of power fuse 8A (Φ 5 × 20mm)
- b) When replacing a fuse, please follow the following steps:
 - 1) Turn off the power switch;
 - 2) Unplug the power plug;
 - 3) Pry open the fuse housing with a screwdriver;
 - 4) Remove the damaged fuse and replace it with a new one;
 - 5) Replace the outer shell of the fuse to its original position;
 - 6) Plug in the power plug.

Warning:

When replacing a fuse, to prevent electric shock, please turn off the power and unplug the power plug.

- 7.1.4 When using the instrument for a long time (more than one year) and cleaning the internal dust stains, it should be carried out by professional maintenance personnel.
- 7.1.5 When the instrument is not in use, it should be placed in a well ventilated and dry place and the instrument should be covered with a dust cover.

7.2 Maintenance

- 7.2.1 After purchasing the instrument, it is necessary to fill out the warranty card and send it to the manufacturer or agent in order to have the warranty effect; From the date of issuing the invoice for the purchased machine, it is a one-year free warranty for our company's product quality issues with the host (note: warranty is provided with the purchase ticket and warranty card; the warranty scope here is limited to the instrument host and does not include consumables such as accessories that need to be replaced regularly).
- 7.2.2 After the warranty period, please contact the manufacturer directly to provide service guarantee.
- 7.2.3 When repairing this machine, you must contact our customer service department or dealer.
Do not repair it without authorization, open it yourself, and our company will not provide warranty.

8. Common Troubles and Troubleshooting Methods

8.1 Instruments can not work properly, do not easily disassemble, should be with the company's customer service department or distributor, by identifying the cause of the failure.

8.2 Before requesting repair service, check the instrument according to the table below to see if you can handle the problem yourself.

fault phenomenon	Causes	Troubleshooting and Solutions
No response after booting up	Power plug not inserted into outlet; Power switch not turned on; Power supply fuse blown.	Check plugs and sockets are not plugged in properly;
A handle Doesn't work properly	Joystick start button not clicked Probe not properly installed The working head is damaged Behind the instrument Connector not properly installed	Click the handle start button Check that the probe is mounted correctly Replace working head or silicone ring Reinstallation
leak	Silicone ring for sealing bit Damaged or missing Improper installation	Replace silicone ring for sealing Send back to factory for repair

9. Manufacturer's responsibility

9.1 The products produced should comply with the product standards, if not in line with our company is responsible for replacement, return.

9.2 Because of the product manufacturing defects caused by personal and property damage our company bears the corresponding responsibility, but one of the following circumstances. We are not responsible:

- a) Purchasers, operating users do not follow the instructions for operation and use, do not follow the safety precautions, warning instructions;
- b) Violation of product transportation, installation, use, maintenance, storage and other provisions resulting in damage to products, persons and property.

9.3 Our company implements lifelong maintenance and technical service for the products, and will repair for the users free of charge for the manufacturing quality problems occurring during the specified quality guarantee period.

10. Replacement of accessories

Parts must be purchased from us when they need to be replaced.

11. Storage and transportation

11.1 Storage: The instrument should be stored in the original box, placed in a well-ventilated clean room, the box should be padded, the ambient temperature is -10 °C ~ 40 °C, the relative humidity is not greater than 93%, does not allow harmful gases, flammable explosive substances and corrosive gases.

11.2 Transportation: the instrument under packing conditions is suitable for transportation by road, railroad, air and waterway, it should be prevented from violent vibration and shock during loading and unloading and transportation, and it should not be subjected to moisture and it should not be mixed with flammable and corrosive substances, and the specific requirements should be stipulated in accordance with the order contract.

12. Term of Use

12.1 The warranty period of this instrument is 1 year. (Note: human damage is excluded)

12.2 Warranty for accessories is limited to 3 months. (Note: human damage is excluded)

12.3 Instruments that have exceeded their service life need to be tested and approved by the engineer for continued use, and the performance of the instrument needs to be tested by the engineer at regular intervals during subsequent use.

12.4 End-of-life instruments and accessories that have exceeded their useful life should be disposed of in accordance with the relevant local regulations.

ingredients list



hydroabrasive
cleanse



☐ Four-pole roller
(Optional)



V-shaped face



☐ Oxygen Renewal Bubble
(Optional)



Pentapole Color Light
microelectronic



☐ Blemish Pen Function
(Optional)



Water Oxygen
airbrush



☐ Ozone Ion
(optional)



Flat head
Vibration atomization



Hydro-abrasive cleaning head



☐ Diamond micro-engraving head
(Optional)



bipolar warming



☐ Diamond Micro-Engraving
(Optional)



point-blank shovel



☐ Motorized Microcrystalline
(Optional)



sledgehammer



☐ Tip vibration atomization
(Optional)



☐ Color light mask
(Optional)



☐ High Frequency
(Optional)



☐ Oxygen Bubble Massage Head (Optional)
+ other silicone ring + fuse



☐ High-frequency probe (optional)



☐ Spot Pen Probe (optional)



power cable (of an appliance etc)