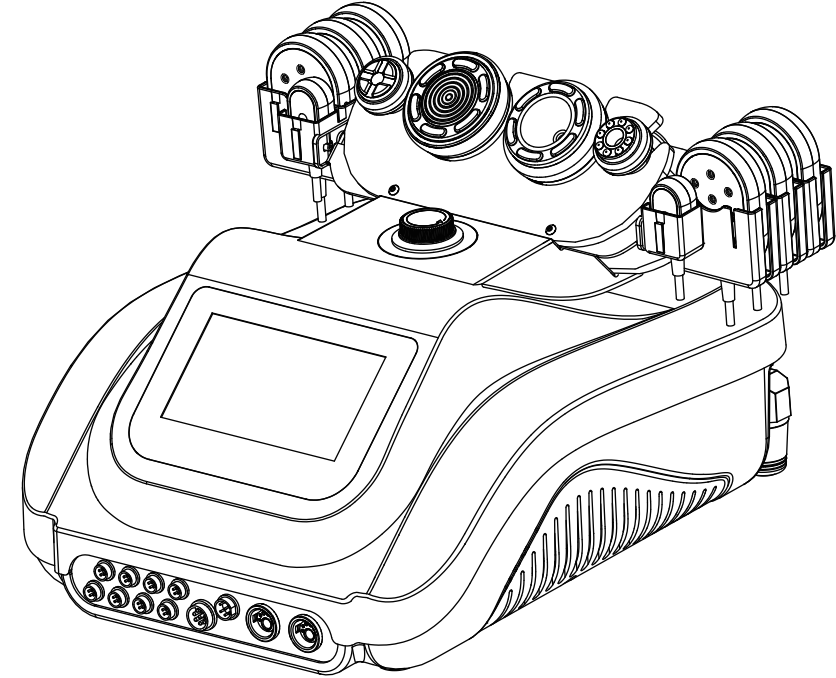


# User Manual

MS-45T2SB



## Content

|                                 |    |
|---------------------------------|----|
| 1.Safety Precautions .....      | 1  |
| 2.Contraindications .....       | 2  |
| 3.Overview .....                | 2  |
| 4.Interface Function .....      | 3  |
| 5.Technical Specification ..... | 8  |
| 6.Use Precautions .....         | 9  |
| 7.Maintenance & Cleaning .....  | 10 |
| 8.FAQ .....                     | 10 |
| 9.Ask & Answer .....            | 14 |
| 10.Operation Guide .....        | 16 |
| 11.Warranty & Support .....     | 19 |

## 1.Safety Precautions

- 1.Please read this manual carefully before use and familiarize yourself with the operation of this instrument and related technology.
- 2.This instrument is a high-precision electronic device that requires proper storage. Please avoid storing it in humid conditions, direct sunlight, or near flammables and explosives to prevent damage.
- 3.Always use the designated accessory provided or recommended by the manufacturer to ensure performance throughout its service life.
- 4.Do not place the instrument in high-temperature conditions, as this may negatively impact its service life and performance.
- 5.Do not apply the instrument on eyes, thyroid, parathyroid, testicles, pregnant women's abdomen, pacemakers, etc.
- 6.Patients should refrain from using this instrument unless they have obtained permission from their doctor.
- 7.Ensure that the instrument is applied on moist skin and avoid the operation on dry skin.
- 8.Power off the instrument when not in use to ensure its safety.
- 9.If you are currently taking weight-loss drugs, please discontinue their use 1 - 2 months before using this instrument. Failure to do so may result in an extended course of treatment.
- 10.To maintain hygiene and extend the instrument's service life, sterilize it with saline.

## 2. Contraindications

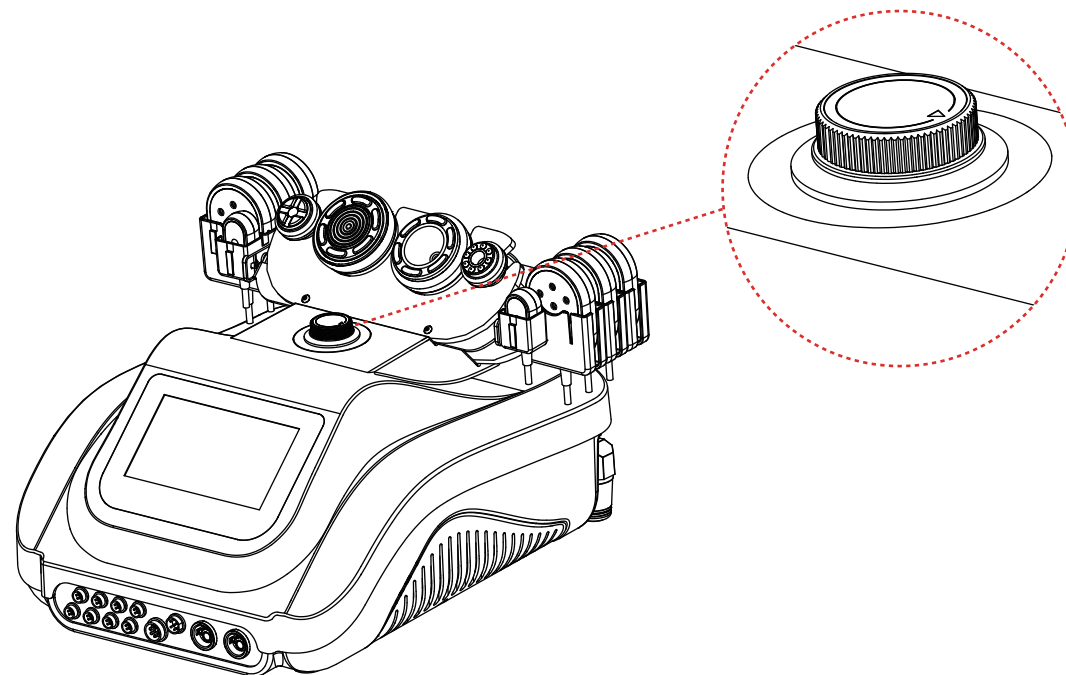
Before using this instrument, it is essential to consult your doctor or seek advice from professionals. Details below:

1. Pregnant or lactating woman.
2. Individuals with hypertension, heart disease, or a pacemaker installed.
3. Individuals with unhealed wounds or those in the recovery period from surgery.
4. Individuals who are sensitive to the micro-current.
5. Individuals suffering from epilepsy, severe diabetes, and hyperthyroidism.
6. Individuals suffering from malignant tumors, hemophilia, and hemorrhage.
7. Individuals with skin disease or infectious disease.
8. Individuals have had a cesarean section within six months, a miscarriage within three months, or a natural birth within two months.
9. For your safety, refrain from using if you've had plastic surgery or have implants/metal objects near the treatment area within 3 months.

## 3. Overview

With the most popular and safest technology for anti-aging, firming skin, and body shaping, this 5-in-1 beauty instrument ensures you achieve your desired body figure and radiant complexion. It provides the perfect solution for people seeking improvements in skin appearance and body figures without injections, drugs, or side effects. For external use with immediate effects.

## 4. Interface Function

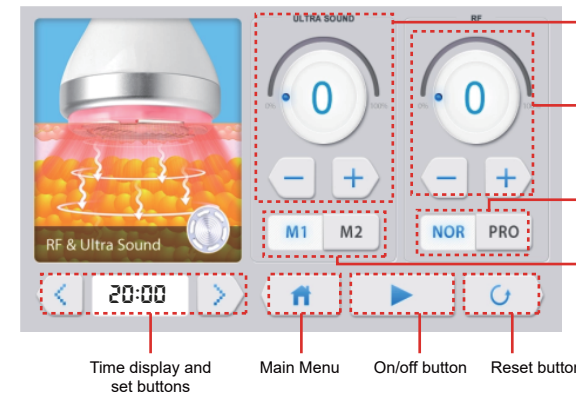


RF & Ultra  
SoundRF & Suction  
Body

RF &amp; Suction

EMS &amp; EL

Lipo Laser



ULTRA SOUND energy display and set buttons

RF energy display and set buttons

Mode selection:

NOR: The handle's energy reaches the set value immediately.

PRO: The handle's energy gradually reaches the set value upon skin contact.

Mode selection:

M1: Continuous working mode

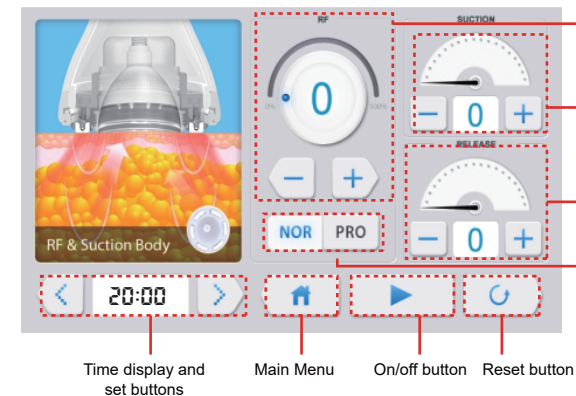
M2: Intermittent working mode

Time display and  
set buttons

Main Menu

On/off button

Reset button



RF energy display and set buttons

Suction time display and set buttons

Release time display and set buttons

Mode selection:

NOR: The handle's energy reaches the set value immediately.

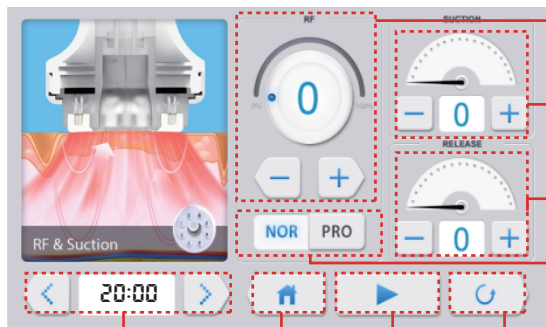
PRO: The handle's energy gradually reaches the set value upon skin contact.

Time display and  
set buttons

Main Menu

On/off button

Reset button



RF energy display and set buttons

Suction time display and set buttons

Release time display and set buttons

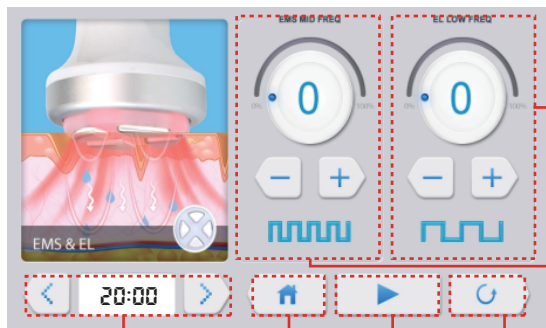
Mode selection:  
 NOR: The handle's energy reaches the set value immediately.  
 PRO: The handle's energy gradually reaches the set value upon skin contact.

Time display and set buttons

Main Menu

On/off button

Reset button



EL energy display and set buttons

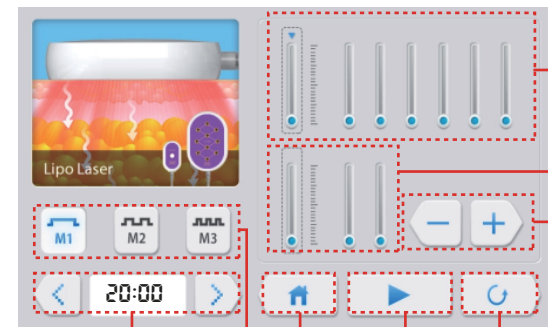
EMS energy display and set buttons

Time display and set buttons

Main Menu

On/off button

Reset button



Energy display of big laser pad

Energy display of small laser pad

Energy level set buttons

Time display and set buttons

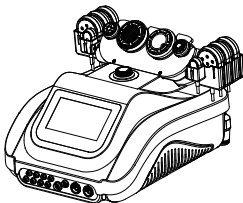

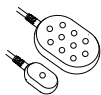

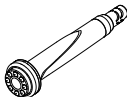
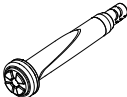
Main Menu

On/off button

Reset button

Mode selection:  
 M1: The lights are steadily on.  
 M2: The lights flash slowly.  
 M3: The lights flash fast.

## 5. Technical Specification

|   |   |  |   |                 |   |                       |
|---|---|--|---|-----------------|---|-----------------------|
|   | Power Supply Input: AC110V-240V 50Hz-60Hz |  |   |                 |   |                       |
|   | Power: 90W                                |  | Input Power: 90W  |                 |   |                       |
|   | Dimensions: 17×32.5×12.2inches            |  |   |                 |   |                       |
|   | Net Weight: 8.5KG                         |  | Gross Weight: 12KG  |                 |   |                       |
|  | Frequency: 5MHz                           |  |  | Wavelength: 5mw |   |                       |
|   | Power: 90W                                |  |   | Power: 16W      |   |                       |
|  | Frequency: 5MHz                           |  | Airflow: 10LPM  |                 |   |                       |
|   | Power: 90W                                |  | Noise level: < 65db (30cm away)   |                 |   |                       |
|   | Vacuum: -73kpa                            |  |   |                 |   |                       |
|   | Frequency: 5MHz                           |  | Airflow: 10LPM  |                 |  | EL Frequency: 4KHz    |
|   | Power: 70W                                |  | Noise level: <65db (30cm away)  |                 |   | EMS Frequency: 62.5Hz |
|   | Vacuum: -73KPa                            |  |   |                 |   | Power: 12W            |

## 6. Use Precautions

1. Strictly follow the instructions in the manual to use the instrument and train operator.
2. Before using the instrument, use a plug with a grounding pin and ensure the power socket is grounded.
3. Make sure the voltage of the instrument is adapted. If the local power supply voltage is unstable, we recommend adding a power-matched regulated power supply between the mains and the instrument.
4. Remove all the metal objects inside the body to avoid causing accidents or affecting treatment effects.
5. Stop the intake of weight drugs 1 - 2 months before the treatment, or extend the treatment course if you want to take the treatment immediately.
6. Do not use the instrument on an empty abdomen, and take the treatment 1 hour later after the meal.
7. Ensure full skin contact with the treatment head throughout the session to avoid uneven heat distribution.
8. Refrain from using the RF & ULTRA SOUND handle on areas such as the head, chest, breast, heart, or back.
9. Ensure the filter cotton is installed inside the RF & SUCTION BODY handle, as the foreign body may block the handle.

## 7. Maintenance & Cleaning

1. Disconnect the power cord when not in use and store the instrument in a dry, cool, and well-ventilated place.
2. Clean and sanitize the handle with a damp cloth or saline, and then dry it thoroughly with a dry towel to ensure it remains dry.
3. Before cleaning the RF & SUCTION BODY handle, ensure to remove the filter cotton to prevent the growth of bacteria.
4. After cleaning the instrument, cover it with a dustcloth or plastic wrap. Before use, ensure to sanitize the handle again for hygienic reasons.
5. Disassembling the instrument and attempting to clean the inside is strictly prohibited. This task should only be performed by professionals.

## 8. FAQ

### 1. How long does it take to see the results of RF treatment?

A: You might experience skin tightness right after the treatment, as the heat stimulation tightens the collagen tissue, and the RF stimulates the subcutaneous tissue bringing the continuous regeneration of collagen, leading to more noticeable results within one week.

### 2. Is RF safe for the skin?

A: RF firming and anti-wrinkle treatment is a non-surgical method that stimulates collagen regeneration and metabolism in the deeper layers of the skin without causing any harm. It's normal to experience temporary heat and redness in the treated area, which indicates increased blood circulation and should subside within a few hours. There's no need to be concerned about this reaction.

### 3. What is the duration of a body sculpting treatment?

A: Approximately 60 minutes, our skilled techniques and advanced instrument guarantee impressive results.

### 4. Liposuction or our device?

A: Liposuction surgery utilizes negative pressure to remove excess adipose tissue from specific areas, resulting in a sculpting effect. It provides you with immediate results, but it also carries risks, requires anesthesia, and involves downtime. While our device offers a risk-free solution with no side effects. It sculpts your body, stimulates collagen regeneration for lifted skin, and creates the ideal figure for an overall improved appearance.

### 5. Is it safe to use ultrasound on the entire body?

A: NO. Ultrasound can break down adipose tissue, causing structural disruption and releasing stored lipids, which are then absorbed and processed by the lymphatic system. The energy of ultrasound is quite intense, and the heart—being a hollow organ—is especially sensitive to acoustic waves. These waves may induce vibrations in the heart, and variations in how they travel through muscle tissue and circulating blood can lead to internal reflections.

As a result, there is a potential risk of the valve detaching from the heart muscle. Additionally, ultrasound treatment must be strictly avoided around the eye area to prevent retinal detachment, as well as near the waist, back, chest, and heart region.

#### **6.Are there any side effects of ultrasound on the human body?**

A: High-frequency sound wave treatment is a non-surgical, non-invasive procedure that requires no incisions or anesthesia. How it works: ultrasound (mechanical waves) initiates cavitation and focused energy. The resulting effects include breakdown of adipose tissue, release of stored lipids, skin firming, and body contouring. The treatment specifically targets low-density adipose structures while preserving high-density tissues such as blood vessels and nerves, ensuring safety and avoiding adverse effects. A mild ringing or noise in the ears may occur during the session—this is normal and not a cause for concern.

#### **7.Why do I get tinnitus during the treatment?**

A: When high-energy ultrasound with a frequency above 20kHz vibrates intensely, it can penetrate the skin and reach subdermal adipose layers up to 20mm deep. This energy generates rapid friction and heat within the tissue, leading to the breakdown and emulsification of lipid deposits. However, this process may produce a sound that is occasionally perceptible in the ears, which is a normal phenomenon.

#### **8.Will the reduced fat come back after the lipo laser treatment?**

A: The number of adipose cells in an adult remains constant, and weight gain is typically due to an increase in the size of these cells. This treatment employs a specific laser to stimulate adipose cells, leading them to release stored fatty acids and triglycerides, thereby reducing cell volume. Consequently, the occurrence of fat returning is highly unlikely. Additionally, maintaining a healthy diet would greatly contribute to preventing it.

#### **9.Any rebound after the lipo laser treatment?**

A: The number of adipose tissues in adults generally remains unchanged—body volume increase usually results from tissue expansion rather than multiplication. Lipo laser treatment uses targeted light energy to stimulate adipose tissues to release stored lipids, thereby reducing their size. As a result, the treated area is unlikely to regain volume, especially when supported by a balanced diet.



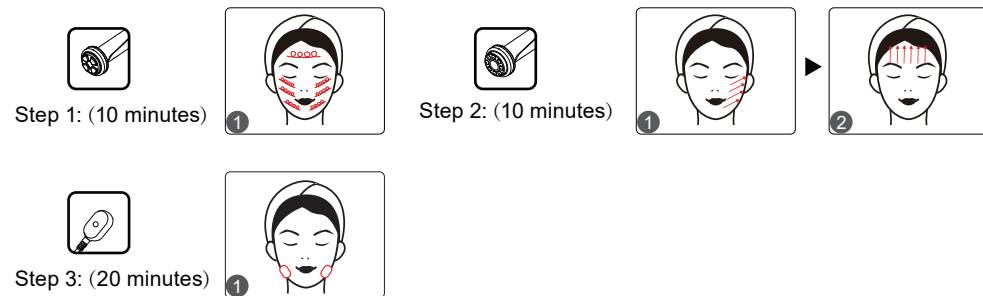
## 9. Ask & Answer

| Ask  | Cause  | Answer   |
|--|--|--|
| 1.Fail to turn on the instrument.                        | → The power cord is disconnected from the wall socket.                   | → Check if the power cord is well connected to the wall socket and ensure that the socket is functional.   |
|  | → The fuse is loose or burned.   | → Replace the fuse on the back of the instrument and restart it.   |
| 2. The instrument is not working and can't be restarted. | → The fuse may have burned out due to unstable voltage or prolonged use. | → Please replace the fuse and restart the instrument 5 minutes later.  |
| 3.The screen shows an error message.                     | → Data error.  | → 1. Turn off the instrument, disconnect the power cord, and wait for 1 minute to restart the instrument.<br>2. If the above method doesn't resolve the problem, please contact your dealer. |

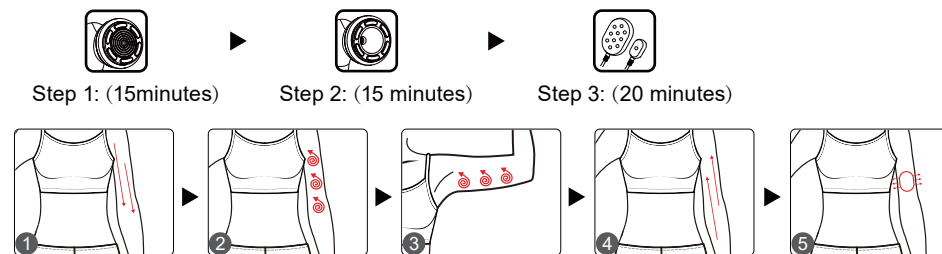
| Ask   | Cause  | Answer  |
|---|--|---|
| 4.The RF is not functioning.                    | → The handle is not properly connected.  | → Please confirm if the handle plug is well connected to the main unit.                       |
|   | → Oil in the treatment area could result in insufficient contact between the handle and the body.                  | → Ensure complete contact between the treatment head and the skin.                            |
|   | → The handle is not contact with the body properly.  | → Apply some gels to the treatment area after cleaning.                                       |
| 5.The RF&ULTRA SOUND handle is not functioning. | → You might mistakenly assume that the handle is not functioning properly because of its low-noise design.         | → To check if the handle is functioning, please refer to the RF & ULTRA SOUND handle pretest. |
|   | → You may have forgotten to apply the gel or have used a product that is not designed for use with the instrument. | → Please use the professional gel for the RF & ULTRA SOUND gel.                               |
|   | → Insufficient pressure.   | → Press harder during RF & ULTRASOUND handle application.                                     |

## 10.Operation Guide

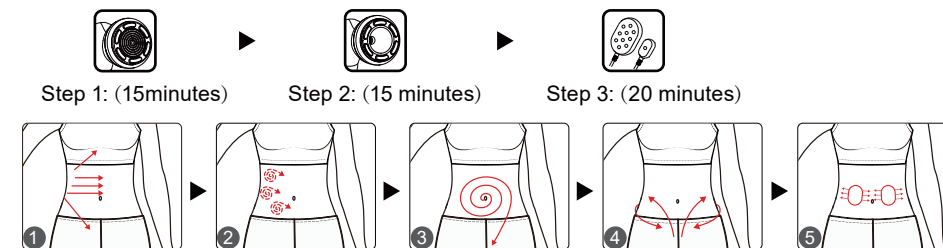
Face:



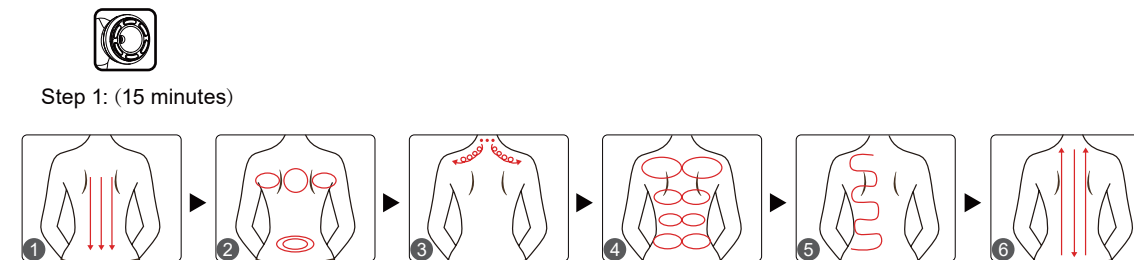
Arm:



Belly:



Back:



Leg:



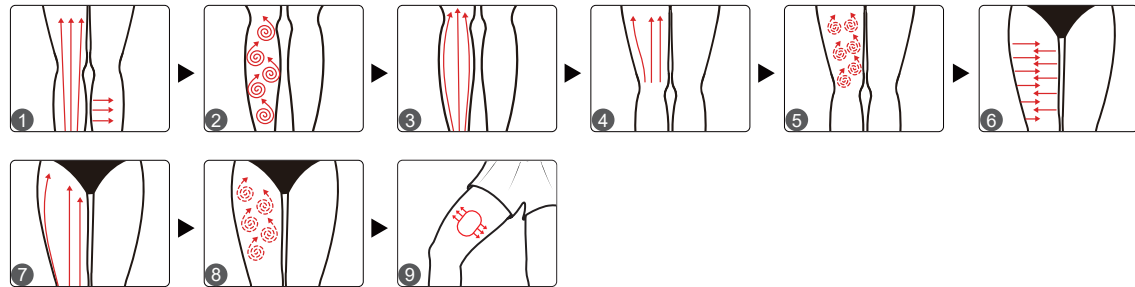
Step 1: (15minutes)



Step 2: (15 minutes)



Step 3: (20 minutes)



## 11. Warranty & Support

We offer a one-year warranty on the main unit and a three-month warranty on components.

Product Name: Versatile Beauty Device  
 Product Model: MS-45T2SB  
 Production Date: \_\_\_\_\_  
 Quality Inspection: \_\_\_\_\_

