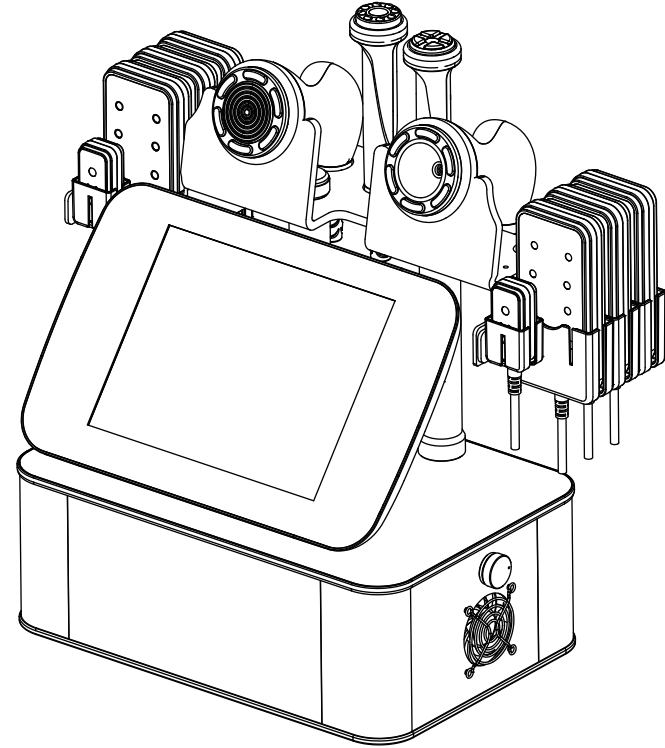


# User Manual



## Content

1.Safety Precautions .....	1
2.Contraindications .....	1
3.Overview .....	2
4.Control Panel Introduction.....	3
5.Technical Specification .....	8
6.Use Precautions .....	9
7.Maintenance & Cleaning.....	10
8.FAQ .....	10
9.Troubleshooting .....	13
10.Operation Guide .....	15
11.Warranty & Support .....	18

## 1.Safety Precautions

- 1.Please read this manual carefully before use and familiarize yourself with the operation of this device and related technology.
- 2.As a high-precision electronic device, this device should be stored properly. Avoid humid conditions, direct sunlight, and proximity to flammable or explosive materials to prevent damage.
- 3.Always use the designated accessory provided or recommended by the manufacturer to ensure performance throughout its service life.
- 4.Do not place the device in high-temperature conditions, as this may negatively impact its service life and performance.
- 5.Do not apply the device on the eyes, thyroid, parathyroid, testicles, pregnant women's abdomen, pacemakers, etc.
- 6.Patients should consult their doctor before using this device.
- 7.Ensure that the device is applied to moist skin and avoid the operation on dry skin.
- 8.Power off the device when not in use to ensure its safety.
- 9.To maintain hygiene and extend the device's service life, sterilize it with saline.

## 2.Contraindications

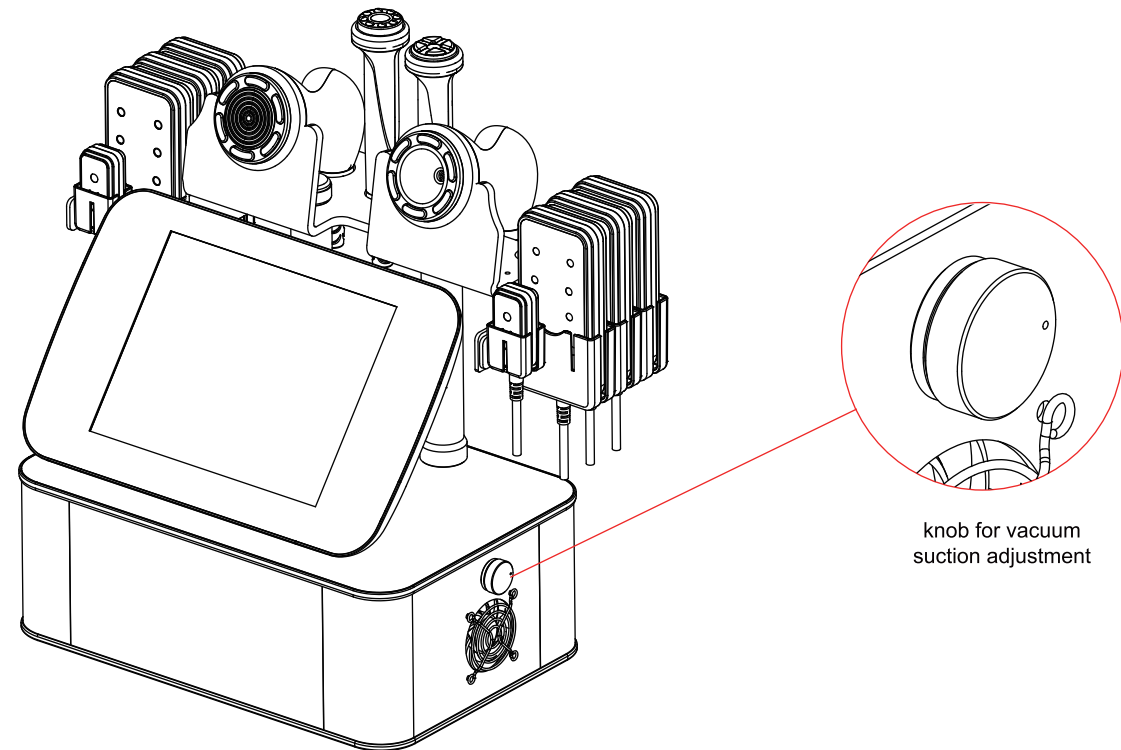
Before using this device, it is essential to consult your doctor or seek advice from professionals. Details below:

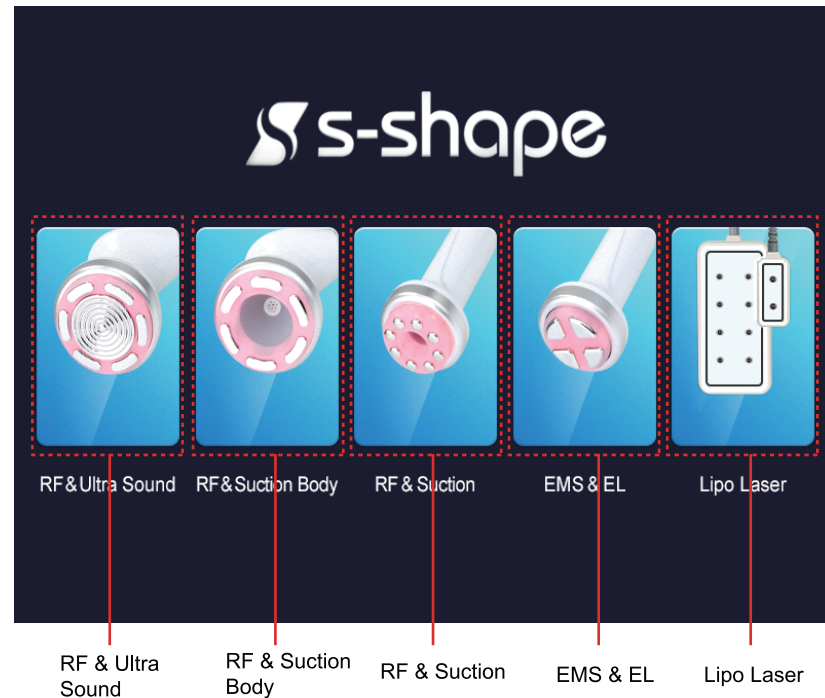
1. Pregnancy or lactation.
2. Hypertension, heart disease, or with a pacemaker installed.
3. Unhealed wounds or ongoing recovery from recent surgery.
4. Sensitivity to micro-currents.
5. Epilepsy, severe diabetes, and hyperthyroidism.
6. Malignant tumors, hemophilia, and hemorrhage.
7. Skin disease or infectious disease.
8. Cesarean section within the last six months, a miscarriage within the last three months, or a natural birth within the last two months.
9. Recent plastic surgery (within three months), or presence of implants or metal objects in the treatment area.

### 3. Overview

With the most popular and safest technology for anti-aging, firming skin, and body shaping, this 5-in-1 beauty device ensures you achieve your desired body figure and radiant complexion. It provides an ideal solution for those seeking skin and body improvements without injections, drugs, or side effects. This non-invasive device delivers visible results with each use.

### 4. Control Panel Introduction





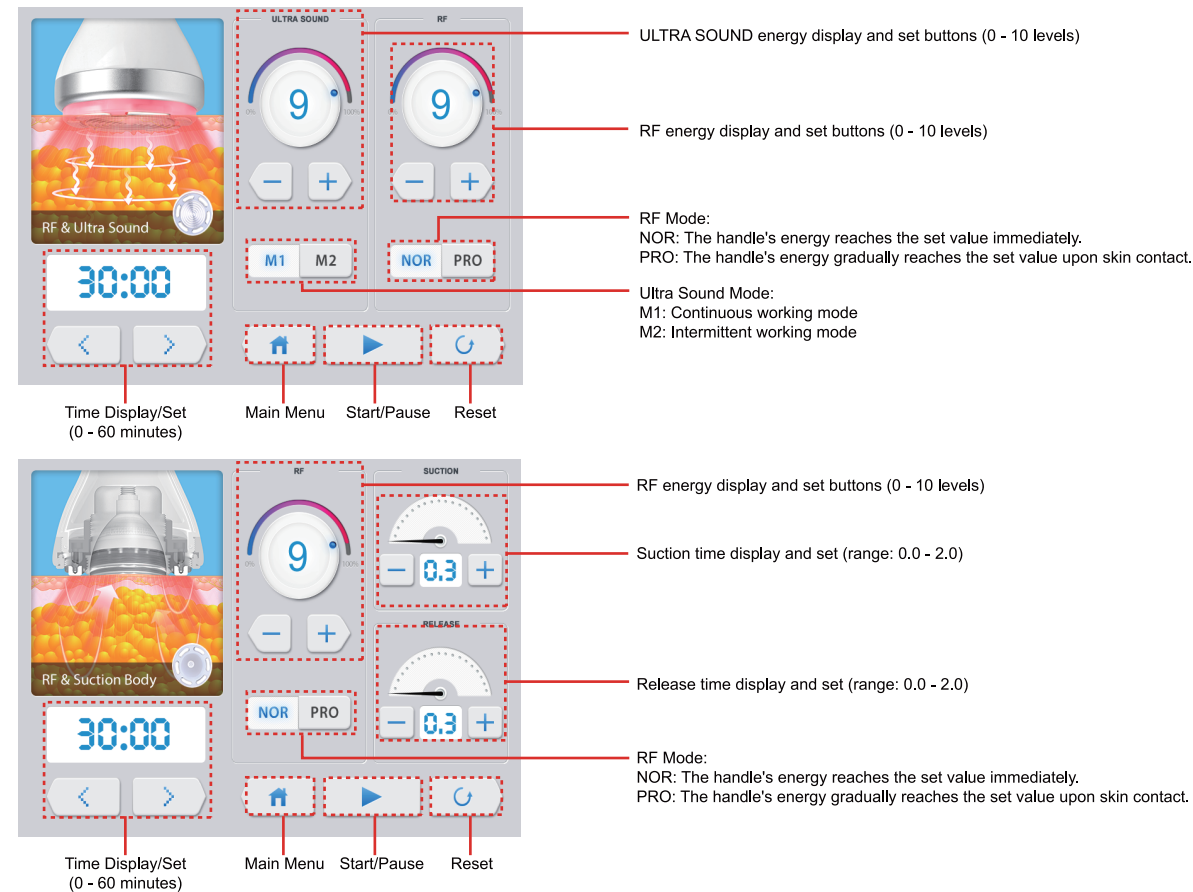
RF &amp; Ultra Sound

RF &amp; Suction Body

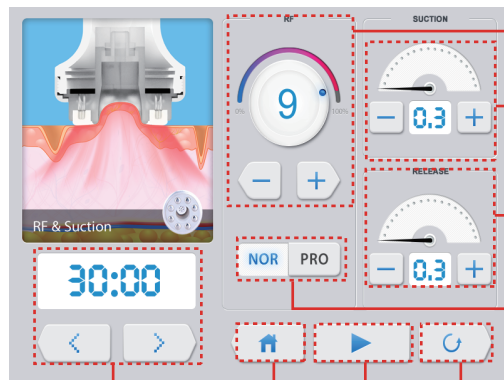
RF &amp; Suction

EMS &amp; EL

Lipo Laser







RF energy display and set buttons (0 - 10 levels)

Suction time display and set (range: 0.0 - 2.0)

Release time display and set (range: 0.0 - 2.0)

RF Mode:

NOR: The handle's energy reaches the set value immediately.

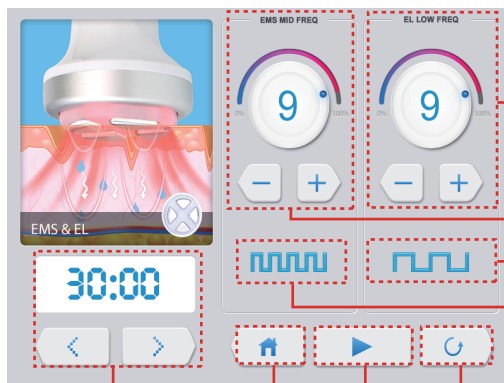
PRO: The handle's energy gradually reaches the set value upon skin contact.

Time Display/Set  
(0 - 60 minutes)

Main Menu

Start/Pause

Reset



EL energy display and set (0 - 10 levels)

EMS energy display and set (0 - 10 levels)

Continuous working mode

Intermittent working mode

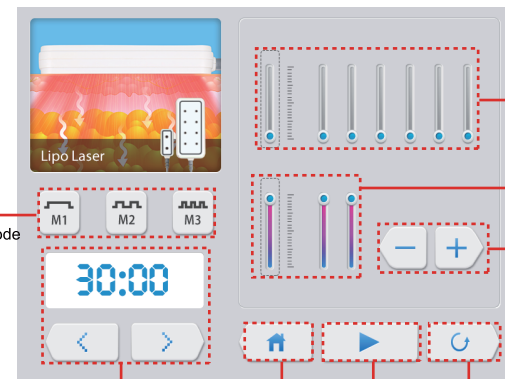
Time Display/Set  
(0 - 60 minutes)

Main Menu

Start/Pause

Reset

Mode Selection:  
M1: Continuous working mode  
M2: The lights flash slowly.  
M3: The lights flash fast.



Energy level of the  
big laser pad

Energy level of the small  
laser pad

Energy Level Set

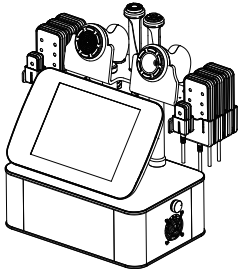
Time Display/Set  
(0 - 60 minutes)


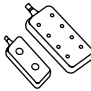
Main Menu

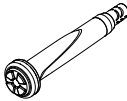
Start/Pause

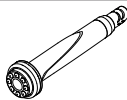
Reset


## 5. Technical Specification

	Power supply Input: AC110V-240V 50Hz / 60Hz		Net Weight: 11.4 KG	
	Power: 90 W		Gross Weight: 12.7 KG	
	Dimensions: 43*32.2*42.3CM			
	Input Power: 90 W			

	RF Frequency: 5 MHz			Power: 15 W
	40K Frequency: 30KHz			
	Power: 90 W			

	EL Frequency: 4 KHz			
	EMS Frequency: 62.5Hz			
	Power: 12W			

	Frequency: 5MHz		Airflow: 10LPM	
	Power: 70W		Noise level: < 65 dB (30cm away)	
	Vacuum: - 73KPa			

	Frequency: 5 MHz	Airflow: 10LPM
	Power: 90 W	Noise level: < 65 dB (30cm away)
	Vacuum: - 73KPa	

## 6. Use Precautions

1. Strictly follow the instructions in the manual to use the device and train operator.
2. Before using the device, use a plug with a grounding pin and ensure the power socket is grounded.
3. Make sure the voltage of the device is adapted. If the local power supply voltage is unstable, we recommend adding a power-matched regulated power supply between the mains and the device.
4. Remove all metal objects inside the body to avoid causing accidents or affecting treatment effects.
5. Discontinue the use of anti-adiposity drugs 1-2 months before the treatment. If immediate treatment is desired, consider extending the regimen.
6. Do not use the device on an empty stomach, and take the treatment 1 hour later after the meal.
7. Ensure full skin contact with the treatment head throughout the session to avoid discomfort.
8. Refrain from using the RF & ULTRASOUND handle on areas such as the head, chest, breast, heart, or back.
9. Ensure the filter cotton is installed inside the vacuum handle, as the foreign body may block the handle.

## 7. Maintenance & Cleaning

1. Disconnect the power cord when not in use and store the device in a dry, cool, and well-ventilated place.
2. Clean and sanitize the handle with a damp cloth or saline, and then dry it thoroughly with a dry towel to ensure it remains dry.
3. Before cleaning the RF & Suction Body or RF & Suction handle, ensure to remove the filter cotton to prevent the growth of bacteria.
4. After cleaning the device, cover it with a dustcloth or plastic wrap. Before use, ensure to sanitize the handle again for hygienic reasons.
5. Disassembling the device and attempting to clean the inside is strictly prohibited. This task should only be performed by professionals.

## 8. FAQ

### 1. How long does it take to see the results of RF treatment?

A: You might experience skin tightness right after the treatment, as the heat stimulation tightens the collagen tissue, and the RF stimulates the subcutaneous tissue bringing the continuous regeneration of collagen, leading to more noticeable results within one week.

### 2. Is RF safe for the skin?

A: RF firming and anti-wrinkle treatment is a non-surgical method that stimulates collagen regeneration and metabolism in the deeper layers of the skin without causing any harm. It's normal to experience

temporary heat and redness in the treated area, which indicates increased circulation and should subside within a few hours. There's no need to be concerned about this reaction.

### 3. What is the duration of a body sculpting treatment?

A: Approximately 60 minutes, our skilled techniques and advanced device guarantee impressive results.

### 4. Liposuction or this device?

A: Liposuction surgery utilizes negative pressure to remove adipose tissue accumulations from specific areas, resulting in a body-shaping effect. It provides you with immediate results, but it also carries risks, requires anesthesia, and involves downtime. While our device offers a risk-free solution with no side effects. It sculpts your body, stimulates collagen regeneration for lifted skin, and creates the ideal figure for an overall improved appearance.

### 5. Is it safe to use ultrasound on the entire body?

A: NO. Ultrasound disrupts adipose tissue, which is then absorbed and metabolized by the human body. The power of ultrasound is quite strong, and the heart is particularly sensitive to sound waves due to being a hollow organ. Sound waves can cause vibrations in the heart, and there can be variations in how sound waves are conducted through muscle tissue and blood within the heart, resulting in back-and-forth reflections. As a consequence, the valve may become dislodged from the heart muscle. Certainly, ultrasound treatment should be strictly avoided around the eye area to prevent the risk of retinal detachment, as well as areas such as the waist, back, chest, and the region around the heart.

### 6.Are there any side effects of ultrasound on the human body?

A: Ultrasound treatment is a non-surgical, non-invasive procedure that requires no incisions or anesthesia. It combines various technologies, including ultrasound (mechanical wave), cavitation, and ultrasound focusing. This process results in adipose tissue breakdown, dissolution, skin tightening, and body shaping. Importantly, it selectively targets low-density adipose tissue while safeguarding high-density tissues like blood vessels and nerves, ensuring no adverse effects on the body. You may notice a slight noise in your ears during the treatment, which is a normal occurrence and requires no cause for concern.

### 7.Why do I get tinnitus during the treatment?

A: When the ultrasound with concentrated energy vibrates strongly and has a frequency higher than 20KHz, it can penetrate the skin to reach the adipose layer that is 20mm deep. The energy causes high-speed friction and heat within the adipose tissue, which breaks them down and emulsifies them. However, this process can create noise that may be audible in your ears.

## 9.Troubleshooting

Ask		Cause		Answer
1.Fail to turn on the device.	→	The power cord is disconnected from the outlet.	→	Check if the power cord is securely connected to the outlet and ensure that the outlet is functional.
	→	The fuse is loose or burned.	→	Replace the fuse on the back of the device and restart it.
2. The device is not working and can't be restarted.	→	The fuse may have burned out due to unstable voltage or prolonged use.	→	Please replace the fuse and restart the device 5 minutes later.
3.The screen shows an error message.	→	Data error.	→	1. Turn off the device, disconnect the power cord, and wait for 1 minute to restart the device. 2. If the above method doesn't resolve the problem, please contact your dealer.

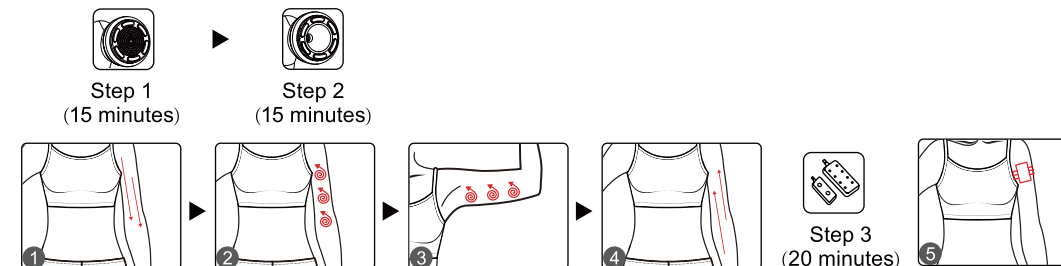
Ask	Cause	Answer
4.The RF is not functioning.	→ The handle is not properly connected.	→ Please confirm if the handle plug is well connected to the main unit.
	→ Oil in the treatment area could result in insufficient contact between the handle and the body.	→ Apply some gels to the treatment area after cleaning.
	→ The handle is not in proper contact with the skin.	→ Ensure complete contact between the treatment head and the skin.
5.The RF&Ultrasound handle is not functioning.	→ You might mistakenly assume that the handle is not functioning properly because of its low-noise design.	→ To check if the handle is functioning, please refer to the RF & ULTRA SOUND handle pretest.
	→ You may have forgotten to apply the gel or have used a product that is not designed for use with the device.	→ Please use the specific gel designed for the RF&Ultrasound treatment.
	→ Insufficient pressure.	→ Apply more pressure during the operation.

## 10.Operation Guide

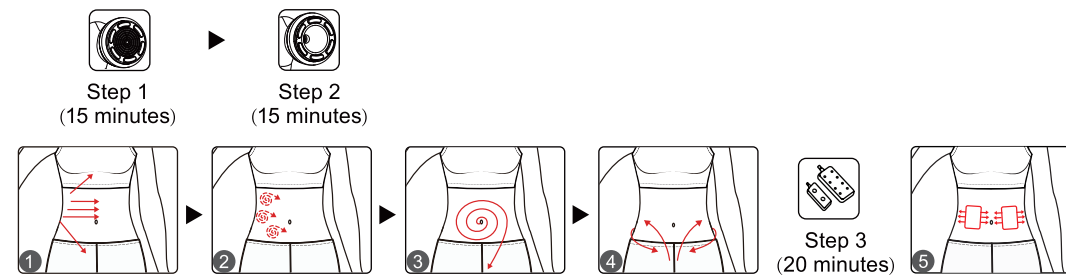
### Face:



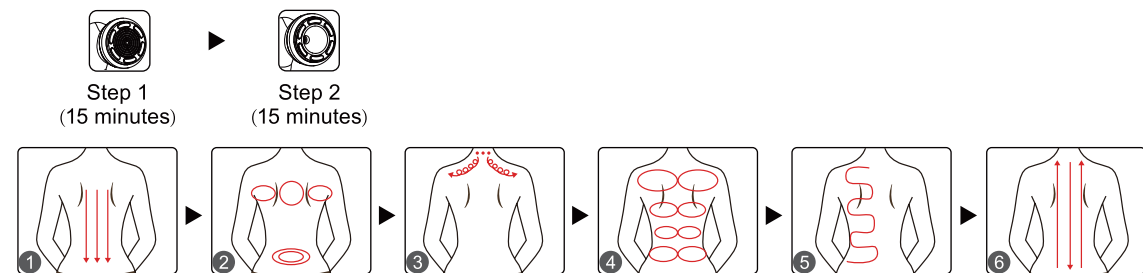
### Arm:



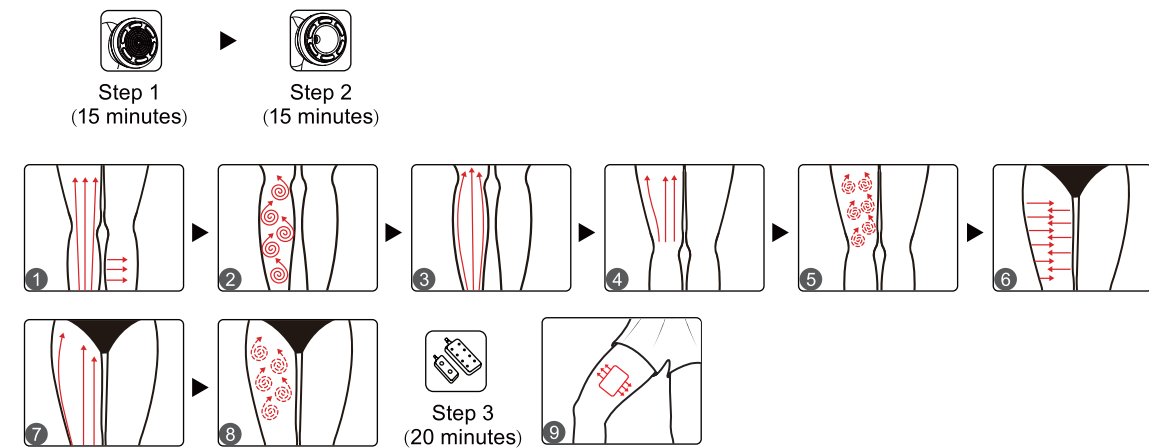
## Belly:



## Back:



## Leg:



## 11.Warranty & Support

We offer a one-year warranty on the main unit and a three-month warranty on the components.

Product Name: Versatile Beauty Enhancer

Product Model: MS-4552SB

Production Date: \_\_\_\_\_

Quality Inspection: \_\_\_\_\_

