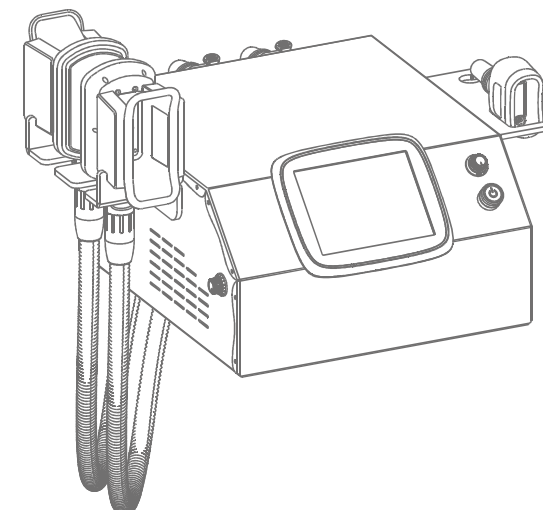


User Manual

SM-7301NB

BeautyFreeze Sculptor



Thank you for purchasing our product.

- Please read this User's Manual carefully for information on how to use the device properly and safely.
- After reading the contents hereof, be sure to keep this User's Manual in an accessible location.
- Make sure to include this User's Manual if you are transferring ownership of the device to another person.

Content

Part I

Safety precautions 1

Contraindications 2

Overview 2

Interface function 3

Technical specification 4

Precautions 4

Maintenance & Cleaning 5

Ask & Answer 5

FAQ 6

Operation guide 7

During treatment 8

After treatment 8

Warranty and support 9

Safety precautions

1. Please read this manual carefully before use and familiarize yourself with the operation of this instrument and related technology.
2. This instrument is a high-precision electronic device that requires proper storage. Please avoid storing it in humid conditions, direct sunlight, or near flammables and explosives to prevent damage.
3. Always use the designated accessory provided or recommended by the manufacturer to ensure performance throughout its service life.
4. Do not place the instrument in high-temperature conditions, as this may negatively impact its service life and performance.
5. Do not apply the instrument on eyes, thyroid, parathyroid, testicles, pregnant women's abdomen, pacemakers, etc.
6. Patients should refrain from using this instrument unless they have obtained permission from their doctor.
7. The application of an anti-freezing membrane on the operating area is necessary, do not contact the skin with the handle directly, nor operate on the dry skin.
8. Power off the instrument when not in use to ensure its safety.
9. If you are currently taking weight-loss drugs, please discontinue their use 1 - 2 months before using this instrument. Failure to do so may result in an extended course of treatment.
10. To maintain hygiene and extend the instrument's service life, sterilize it with saline.

Contraindications

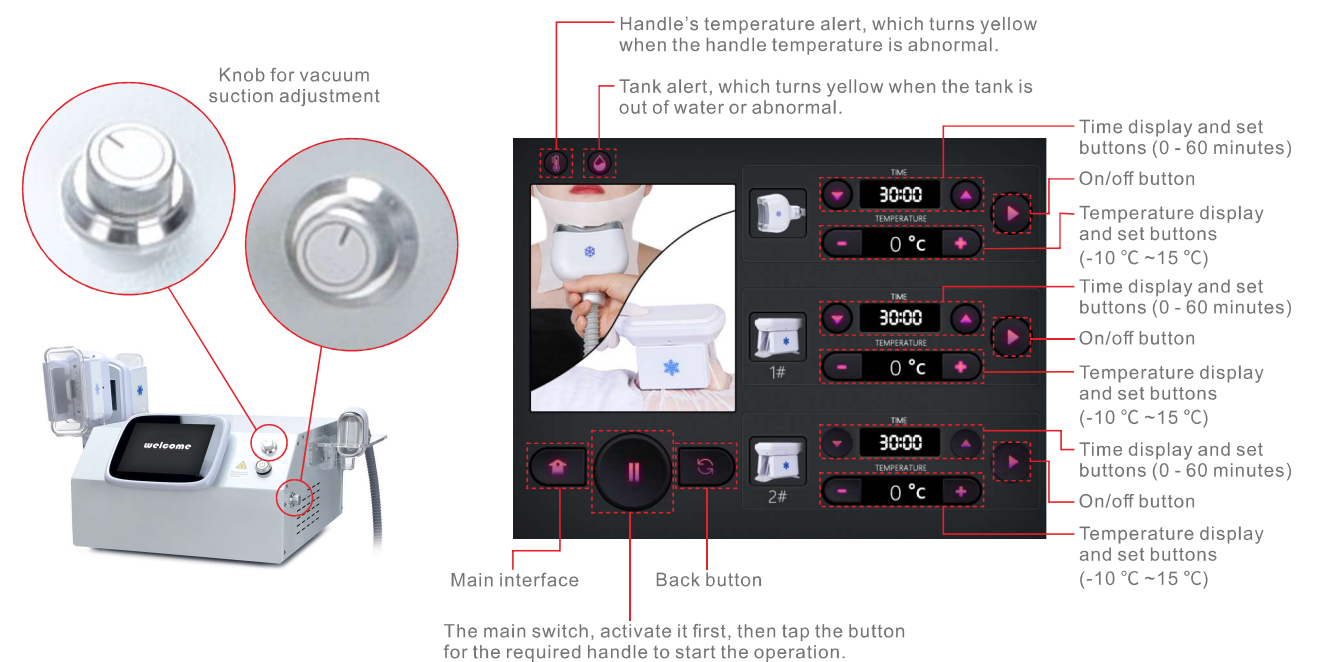
Before using this instrument, it is essential to consult your doctor or seek advice from professionals. Details as below:

1. Pregnant or lactating woman.
2. Individuals with hypertension, heart disease, or a pacemaker installed.
3. Individuals with unhealed wounds or those in the recovery period from surgery.
4. Individuals suffering from epilepsy, severe diabetes, and hyperthyroidism.
5. Individuals suffering from malignant tumors, hemophilia, and hemorrhage.
6. Individuals with skin disease or infectious disease.
7. Individuals have had a cesarean section within six months, a miscarriage within three months, or a natural birth within two months.
8. For your safety, refrain from using if you've had plastic surgery or have implants/metal objects near the treatment area within 3 months.


Overview

BeautyFreeze Sculptor brings you the latest and safest fat-freezing technology, ensuring a radiant transformation. It provides the perfect solution for people seeking improvements in body figures without injections, drugs, or side effects. For external use with immediate effects.

Interface function



Technical specification

	Power supply Input: AC110V-240v 50-60Hz		Net Weight: 19.5KG
	Power:	290W	Gross Weight: 24KG
	Dimensions:	30.3×26.6×16.5 inch	
	Input Power:	290W	

Precautions ⚠

1. Strictly follow the instructions in the manual to use the instrument and train operator.
2. Before using the instrument, you must use a plug with a grounding pin and ensure that the power socket is grounded.
3. Make sure the voltage of the instrument is adapted. If the local power supply voltage is unstable, we recommend adding a power-matched regulated power supply between the mains and the instrument.
4. Remove all the metal objects inside the body to avoid causing accidents or affecting treatment effects.
5. Stop the intake of weight drugs 1 - 2 months before the treatment, or extend the treatment course if you want to take the treatment immediately.
6. Do not use the instrument on an empty abdomen, and take the treatment 1 hour later after the meal.
7. Ensure full skin contact with the treatment head throughout the session to avoid uneven heat distribution.

Maintenance & Cleaning

1. Disconnect the power cord when not in use and store the instrument in a dry, cool, and well-ventilated place.
2. Clean and sanitize the handle's with a damp cloth or saline, and then dry it thoroughly with a dry towel to ensure it remains dry.
3. After cleaning the instrument, cover it with a dustcloth or plastic wrap. Before use, ensure to sanitize the handle again for hygienic reasons.
4. Disassembling the instrument and attempting to clean the inside is strictly prohibited. This task should only be performed by professionals.

Ask & Answer

Ask		Causes		Solutions
1. Instrument fails to turn on?	→	The power cord is disconnected to the wall socket.	→	Check if the power cord is well connected to the wall socket and ensure that the socket is functional.
	→	The fuse is loose or burned.	→	Replace the fuse on the back of the instrument and restart it.
2. The instrument is not working and can't be restarted?	→	The fuse may have burned out due to unstable voltage or prolonged operation.	→	Please replace the fuse and restart the instrument 5 minutes later.
3. The screen shows an error message.	→	Data error.	→	1. Turn off the instrument, disconnect the power cord, and wait for 1 minute to restart the instrument. 2. If the above method doesn't work, please contact the dealer.

Ask		Causes		Solutions
4. The water-drop icon in the upper left corner of the interface turns yellow.	→	Water supply failure.	→	1. Add water. 2. If the above method doesn't work, please contact the dealer.
5. The thermometer icon in the upper left corner of the interface turns yellow.	→	Temperature malfunction	→	1. If it happens upon turning on the instrument, probably the handle is not securely connected to the main unit. 2. If it happens upon starting the operation, power off the instrument, then wait for 1 minute before restarting the instrument. 3. If the above methods don't work, please contact the dealer.

FAQ

1. How does the Fat-freezing treatment work?

A: The fat freezing device is placed on the surface of human skin, cooling the subcutaneous tissue to approximately 4°C. This process accelerates the aging and subsequent death of fat cells, which are then naturally eliminated from the body through metabolic processes, resulting in a slimming effect.
2. Do I need to diet and exercise after treatment?

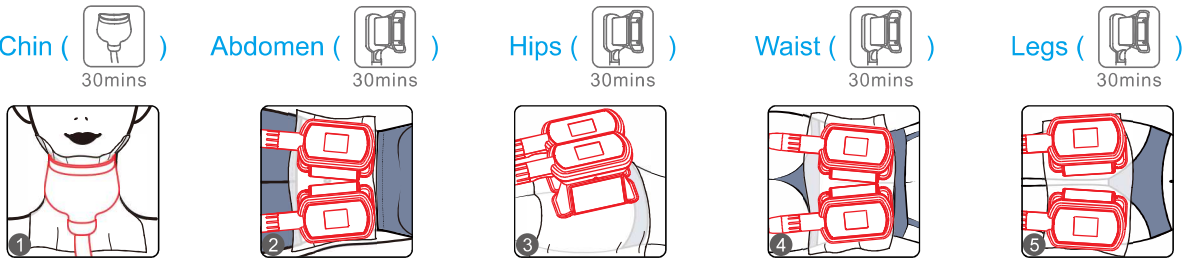
A: After the treatment, it's important to maintain a healthy diet and exercise regularly since the treatment only reduces body fat and doesn't increase basal metabolic rate. Without incorporating exercise and a balanced diet into your lifestyle, there's a risk of regaining weight over time.

3. How long does it take to notice the result of the Fat-Freezing treatment?

A: Approximately 1 – 2 months, although it can vary based on individual factors and metabolism. Based on the poor resistance to the low temperature of the fat cell, the Fat-freezing treatment utilizes a constant temperature of 4 °C to cool the fat cells. This process causes fat cells to die and be naturally eliminated through metabolism. Typically, you may notice visible results over time.
4. Why the application of anti-freezing membrane is necessary?

A: The main function of the anti-freezing membrane is the regulation of temperature in the treatment area. As proven by the clinical test, the membrane effectively prevents the skin from frostbite during the Fat-freezing treatment.

Operation guide



During treatment

Note:

1. During the treatment, fat deposits are sucked into the handle gradually, the stronger the suction, the tighter the fat deposits are sucked.
2. You may use two handles simultaneously.
3. When the handle is applied to the treatment area, there may be air trapped between your skin and the membrane, resulting in the formation of bubbles due to the suction from the handle.

It's normal to experience mild swelling, redness, or bruising after treatment, so there's no cause for concern.

After treatment

1. Stay warm, avoid cold food, or catch a cold after treatment.
2. Take a shower 4 - 6 hours later after treatment.
3. Drink plenty of warm water to stay hydrated and promote metabolism.
4. Do not overeat or stay up late.
5. Avoid intake of cold, raw, spicy food, and have enough sleep.
6. Avoid crop tops, backless dresses, miniskirts, and hotpants.
7. Do not scratch the treatment area.
8. Do not press the treatment area.

Warranty and support

We provide a one-year warranty and a three-month return and replacement policy from the date of purchase.

Product Name: BeautyFreeze Sculptor
Product Model: SM-7301NB
Production Date: _____
Quality Inspection: _____

